



M-series

MDS1824K05+MD18-ANS

M-SERIES SHORT EMERGENCY CART with MD18-ANS Anesthesia Package

Short Mini Width, Five Drawer Anesthesia Cart w/Key Lock

Designed and built to meet the needs of today's healthcare market. Ergonomic side handles, comfort drawer pulls, expanded lock options and a standard plastic top make things easier for your staff and help support your infection control initiatives. M-Series carts offer you choices.

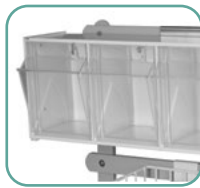
MD18-ANS Accessories Include:



3-Tier Back Rail
(MD30-RBR3)



(3) 12" Side Rails
(SIDERAIL12)



5-Compartment Tilt Bin
w/Rail Clips (TILTBIN5RC)



Engineered &
Manufactured
in the U.S.

Features:

- Sturdy, uni-body steel construction
- Key lock with two keys
- Durable scratch resistant heat sealed powder coat finish
- Full extension drawers slides for easy access
- Body has pre-threaded accessory mounting holes
- Removable plastic top
- 24" of vertical drawer space
- Drawer Configuration: Three 3" drawers (7.6 cm), one 6" drawer (15.2 cm) and one 9" drawer (22.8 cm)
- Cart is delivered assembled
- Industry only fully curved protective bumper
- Fully customizable drawer configurations
- Industry best 5" quiet rolling casters - one steering caster and two braking casters
- 12-Year Manufacturer's Warranty, 1-Year Limited Warranty on any bought-out parts

Color shown with a Burgundy body and Light Gray drawers. More than 20 additional colors are available.



HARLOFF

INNOVATING STORAGE FOR CARE

View similar products online at

<https://www.harloff.com/product-category/anesthesia-carts/>

Toll Free: (800) 433-4064 • Ph: (719) 637-0300
medicalsales@harloff.com • www.harloff.com

All dimensions are available in the "MA-Dims-18wide-5caster.pdf" document. Shipping weights can be found at the online product listing for this model, or feel free to request them from your Harloff Team.