



M-series MDS3030E06-ANS3

M-SERIES TALL ANESTHESIA CART with MD30-ANS3 Deluxe Anesthesia Package

MD30-ANS3 Accessories Include:



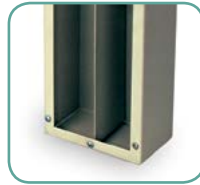
5-Compartment
Tilt Bin w/Rail Clips
(TILTBIN5RC)



Plastic Waste
Container
(MD-3GALWASTEDM)



Sharps Container
w/Wire Holder
(MD-SHARPS-RC)



Catheter Box w/
Rail Clip
(CATHBOX18RC)

Drawer Configuration:

- Three 3" drawers (7.6 cm), two 6" drawers (15.2 cm) and one 9" drawer (22.7 cm)
- 24.5" W x 17" D (62.2 x 43.2 cm)

Assembled Cart Dimensions:

- 66.75" H x 47.625" W x 22" D (169.5 cm H x 121 cm W x 55.9 cm D)
- Cart weight: 224 lbs (101.6 kg)
- Approximate shipping weight: 263 lbs (119.3 kg)
- Approximate Shipping Dims: 56" H x 37" W x 26" D (142.2 cm x 94 cm x 66 cm)

Warranty: 12-Year Manufacturer's Warranty on shipments to US and Canada, 5-Year Manufacturer's Warranty on all other International shipments. 1-Year Limited Warranty on any bought-out parts



3-Tier Back Rail
(MD30-RBR3)



(3) 12" Side Rails
(SIDERAIL12)



Large Utility Basket
(BASKET3RC)



Engineered &
Manufactured
in the U.S.



Tape and Label
Dispenser w/Rail
Clips (LABELDISP)



(1) Basic 6"
Drawer Divider
(MD30-DIV6-B)



(2) Standard 3"Drawer
Divider with Tray
(MD30-TRAYDIV3-S)

Color shown is
Navy. More than
20 additional
colors are
available.

Features:

- Sturdy, uni-body steel construction
- Choice of lock options: www.harloff.com/locking-options/
- Durable scratch resistant heat sealed powder coat finish
- Full extension drawers slides for easy access
- Body has pre-threaded accessory mounting holes
- Industry only fully curved protective bumper
- Ergonomic side push handles can be mounted on either side
- Industry best 5" quiet rolling Tente® casters - 1 steering caster and 2 braking casters
- Antimicrobial plastic top, removable
- Fully customizable drawer configurations
- 30" of vertical drawer space
- Cart is latex free and delivered assembled



View similar products online at
<https://www.harloff.com/acute-care-carts/anesthesia-carts/>

Toll Free: (800) 433-4064 • Ph: (719) 637-0300
medicalsales@harloff.com • www.harloff.com