

# MPA3030E06+MD30-ANS3



## ALUMINUM



### A-SERIES TALL ANESTHESIA CART

w/Six Drawers, E-Lock & MD30-ANS3 Anesthesia Pkg

#### MD30-ANS3

#### Accessories Include:



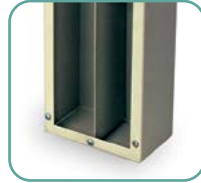
5-Compartment Tilt Bin w/Rail Clips (TILTBIN5RC)



Plastic Waste Container (MD-3GALWASTEDM)



Sharps Container w/Wire Holder (MD-SHARPS-RC)



Catheter Box w/ Rail Clip (CATHBOX18RC)

#### Drawer Configuration:

- Three 3" drawers (7.6 cm), two 6" drawers (15.2 cm) and one 9" drawer (22.7 cm)
- 24.5" W x 17" D (62.2 x 43.2 cm)

#### Assembled Cart Dimensions:

- 66.75" H x 37.5" W x 22" D (169.5 cm H x 95.3 cm W x 55.9 cm D)
- Cart weight: 198 lbs (89.8 kg)
- Approximate shipping weight: 237 lbs (107.5 kg)
- Approximate Shipping Dims: 56" H x 37" W x 26" D (142.2 cm x 94 cm x 66 cm)

**Warranty:** 12-Year Manufacturer's Warranty, 1-Year Limited Warranty on any bought-out parts



3-Tier Back Rail (MD30-RBR3)



(3) 12" Side Rails (SIDERAIL12)



Large Utility Basket (BASKET3RC)



Engineered & Manufactured in the U.S.



Tape and Label Dispenser w/Rail Clips (LABELDISP)



(1) Basic 6" Drawer Divider (MD30-DIV6-B)



(2) Standard 3" Drawer Divider with Tray (MD30-TRAYDIV3-S)

Color shown is Navy. More than 20 additional colors are available.



- Curved drawer pulls, durable and elegant
- Fully welded uni-body aluminum construction
- Heat-sealed durable scratch resistant powder coat finish
- Ordered accessories are easily attached to pre-threaded holes with a screwdriver
- Industry only fully curved protective bumpers
- Self-closing, steel ball bearing, full extension drawer slides for easy access and smooth feel
- Antimicrobial plastic top, removable and easily replaceable
- Fully customizable drawer configurations at no extra charge
- Ergonomic side push handles, mounted on the left or right
- Industry best 5" quiet rolling Tente® casters - 1 steering caster and 2 braking casters
- 30" of vertical drawer space



View similar products online at <https://www.harloff.com/acute-care-carts/anesthesia-carts/>

Toll Free: (800) 433-4064 • Ph: (719) 637-0300  
medicalsales@harloff.com • www.harloff.com