



HEAT SEALED POWDER COAT STEEL 16 SCOPE CAPACITY CABINET, KEY LOCK

SC8036DRDP

Scope Cabinet Features:

- Meets or exceeds Joint commission, AORN, SGNA, and AAMI guidelines.
- Positive pressure fully redundant fan system
- Industries only unit with 3 intake and 2 exhaust fans
- Fan run time is fully adjustable and activated each time cabinet is closed
- HEPA filter removes 99.7% of particulates, .03 Microns
- Industry first replaceable HEPA Filter system without removal of scopes
- Holds 16 scopes with secure adjustable mounting system
- Medical grade electrical system
- Tempered glass double doors
- Easy to clean removable drip tray

The Sure-Dry Scope Cabinet includes the industry best Positive Pressure HEPA Filtered Drying system. Inside air is replaced inside the cabinet 4 times per minute.

Scopes
not included

Simple "Plug and Play" upgradeable with Dri-Scope Aid®, industry leading internal lumen drying system

HARLOFF
INNOVATING STORAGE FOR CARE

Engineered &
Manufactured
in the U.S.



View similar products online at

<https://www.harloff.com/scope-drying-and-storage-cabinets/suredry-scope-cabinets/>

**Toll Free: (800) 433-4064 • medicalsales@harloff.com
www.harloff.com • Ph: (719) 637-0300**



STAINLESS STEEL 16 SCOPE CAPACITY CABINET, KEY LOCK



Suredry
SCOPE CABINETS

SCSS8036DRDP

Scopes
not included

Scope Cabinet Features (continued):

- Multiple locking options available including badge entry
- Scope cabinets are delivered fully assembled
- Harloff has Industry Best 12 year manufacturers warranty for Sales to US and Canada
- Overall cabinet dimensions:
93"H x 36"W x 21"D

Color Options:

- Stainless Steel
- Heat sealed powder coat low carbon steel, available in over twenty color options
- View colors online:
<https://www.harloff.com/finish-options/>

HARLOFF
INNOVATING STORAGE FOR CARE

Engineered &
Manufactured
in the U.S.



View similar products online at

<https://www.harloff.com/scope-drying-and-storage-cabinets/suredry-scope-cabinets/>

**Toll Free: (800) 433-4064 • medicalsales@harloff.com
www.harloff.com • Ph: (719) 637-0300**



Timer:

- Timer sets drying time with both doors closed, and resets when doors open.



- Default is 90 minute runtime, but can be set from 10 minutes to 180 hours.

Why is a positive pressure system important?

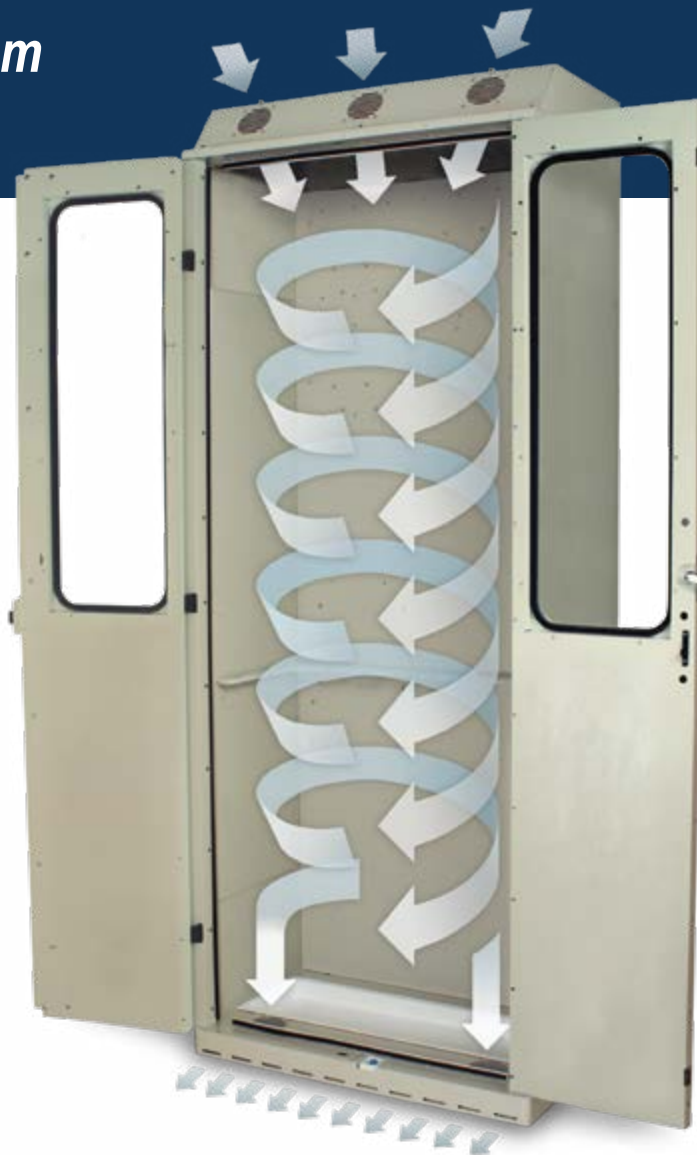
The unique design of the SureDry Scope Cabinet includes both top fans for intake and lower fans for exhaust. This push/pull design creates a vortex of air that flows through the cabinet ensuring maximum drying efficiency.

Intake:

Intake Airflow comes through 3 Separate HEPA filters (removes 99.7% of particulates, .03 Microns) driven by 3 fully redundant fans producing a positive pressure vortex from the top of the cabinet. This creates a circular motion of airflow evenly over all scopes.

Exhaust:

The lower exhaust fans pull the circulated air out of the cabinet ensuring the flow of air is consistent from top to bottom, providing a complete drying system for the entire scope. This push pull multiple fan system, an industry first, ensures not only a positive pressure system to meet all major guidelines but also ensures forced drying and equal levels across each and every scope across it's full length.



A Smart Choice to Meet & Exceed Current AORN, SGNA and AAMI Guidelines

Scope Storage Guidelines	Forced Air Drying	HEPA Filtered Air	Hang Scopes Vertically	Scopes Must Hang Freely, No Touching or Coiling	Easy to Clean and Disinfect	Closed Door Cabinet	Positive Air Pressure	Circulated Air Environment	Connectors — Use Disposables or Reusables Stored w/Scopes	Dry Scopes Completely	Use Channel Drying*
AORN	no data	✓	✓	✓	✓	✓	✓	✓	✓	no data	no data
SGNA	✓	✓	✓	✓	✓	no data	no data	no data	✓	✓	no data
AAMI	✓	✓	✓	✓	✓	✓	✓	✓	✓	✓	✓

Harloff Scope Cabinets Meet & Exceed These Guidelines (*Channel Drying Available Only with Dri-Scope Aid®)

10 Reasons to Choose **HARLOFF** for Your Scope Cabinets



1 *Industry Best Positive Pressure HEPA Filtered Drying System.* Designed to add Dri-Scope Aid® now or later with easy “Plug & Play” installation.

A Smart Choice to Meet & Exceed Current SGNA, AORN and AAMI Guidelines

Proudly Made in the USA



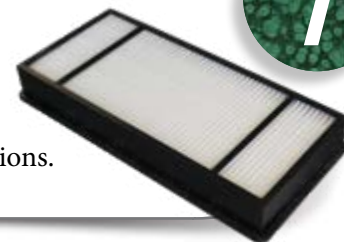
6 Harloff products are proudly *Designed, Engineered and Manufactured in the United States* at our Colorado Springs, CO facility.

Dri-Scope Aid® Internal Lumen Drying System

2 *HEPA filtered air to all internal channels* on DSS3316 models only. Automated drying & continuous venting cycle for overnight storage. All SureDry cabinets are fully retrofittable with Dri-Scope Aid®.

Easy Access to HEPA Filters

Change HEPA filters *without opening the cabinet.* Save time and ensure no cycle interruptions.



Disposable Connectors

3 *Save time and ensure compliance!* Use single-use connectors for all internal channels of the endoscope. Part of the Dri-Scope Aid® package.



Keyed or Keyless Locks

Options include key locks, basic electronic push button locks, advanced keypads and proximity readers. View locking options online at www.harloff.com/locking-options/



Hooks and Holders for Specialized Scopes

4 Major brands to include *Fuji, Olympus, Pentax, Karl Storz and others.*

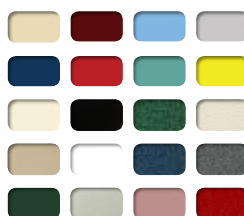


Scope Cabinet Finish Options

9 Choose Stainless Steel, Heat Sealed Powder Coat in High Gloss or Textured Low Gloss, or upgrade to an *antimicrobial finish.*

12 Year Warranty

5 *Our Manufacturer's Warranty is Unmatched* in the industry. We build our cabinets to last and we stand behind them.



Superior Color Choices

10 *Over 20 Colors* to choose from. Cabinets have a heat sealed powder coat finish inside and out. View color options online at www.harloff.com/finish-options/