



## SureDry SCOPE CABINETS

# HEAT SEALED POWDER COAT STEEL 14 SCOPE TAMBOUR DOOR DRYING CABINET, KEY LOCK

Scopes not  
included

**SC8036TKDP-14**

### SCOPE CABINET FEATURES

- Positive pressure fully redundant fan system
- Includes two high volume intake fans and one exhaust fan
- Fan run time is fully adjustable and activated each time cabinet is closed
- HEPA filter removes 99.7% of particulates, .03 Microns
- Holds 14 scopes with a secure adjustable mounting system (other configurations available)
- Convenient replacement of HEPA filters with easily removed thumb screws
- Medical grade electrical system
- Roll-up tambour door with key lock
- Easy to clean removable drip tray
- Cabinets are delivered fully assembled
- Harloff has Industry Best 12 year limited manufacturers warranty for Sales to US and Canada
- Cabinet dimensions: 93.625"H x 36"W x 24"D

### COLORS

Available in more than twenty color options.  
View online: <https://www.harloff.com/finish-options/>



The Sure-Dry Scope Cabinet includes the industry best Positive Pressure HEPA Filtered Drying system. Inside air is replaced inside the cabinet four times per minute.

**Harloff scope cabinets meet or exceed Joint Commission, AORN, SGNA and AAMI guidelines.**



Engineered &  
Manufactured  
in the U.S.



View similar products online at  
<https://www.harloff.com/suredry-scope-cabinets/>

**Toll Free: (800) 433-4064 • [medicalsales@harloff.com](mailto:medicalsales@harloff.com)  
[www.harloff.com](http://www.harloff.com) • Ph: (719) 637-0300**

# 10 Reasons to Choose **HARLOFF** for Your Scope Cabinets

*A Smart Choice to Meet & Exceed Current  
SGNA, AORN and AAMI Guidelines*

## Proudly Made in the USA



Harloff products are proudly  
**Designed, Engineered and  
Manufactured in the United States**  
at our Colorado Springs, CO facility.



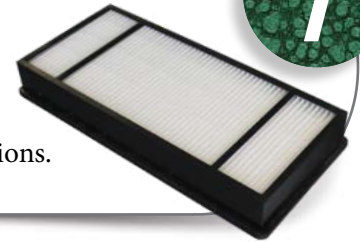
**Industry Best Positive Pressure HEPA  
Filtered Drying System.** Designed to add Dri-Scope  
Aid® now or later with easy “Plug & Play installation.

## **Dri-Scope Aid®** Fully Retrofittable in Field

All SureDry scope cabinets are fully designed to be  
field installed with the industry best Dri-Scope Aid®  
lumen drying system, which provides HEPA  
filtered air to each internal scope channel.

## Easy Access to HEPA Filters

Change HEPA filters fast  
**using simple thumb  
screws.** Save time and  
minimize cycle interruptions.



## LED Lighting Option

**Brighten your cabinet**  
and easily inspect scopes  
with fully dimmable optional  
overhead LED lighting which  
triggers on door open/close.

## Easy Lifting Tambour Door

There's no need to bend down to  
lift the scope cabinet door. **With  
an ergonomic handle built right  
into the middle of the tambour door,**  
opening and closing your scope cabinet requires  
no stooping and minimal effort.

## Hooks and Holders for Specialized Scopes

Major brands to include  
**Fuji, Olympus, Pentax, Karl Storz and others.**

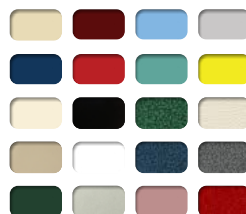


## 12 Year Warranty

**Our Manufacturer's  
Warranty is Unmatched** in the  
industry. We build our cabinets to  
last and we stand behind them.

## Scope Cabinet Finish Options

Choose Stainless Steel, Heat Sealed Powder  
Coat in High Gloss or Textured Low Gloss, or  
upgrade to an **antimicrobial finish.**



## Superior Color Choices

**Over 20 Colors** to choose from.  
Cabinets have a heat sealed powder coat  
finish inside and out. View color options  
online at [www.harloff.com/finish-options/](http://www.harloff.com/finish-options/)