



HEAT SEALED POWDER COAT OR STAINLESS STEEL 20 SCOPE CAPACITY CABINET, KEY LOCK

SC8060DRDP-2DSS2310

Scopes not
included

FEATURES

- Positive pressure fully redundant fan system
- Industries only unit with four intake fans and two exhaust fans
- Fan run time is fully adjustable and activated each time cabinet is closed
- HEPA filter removes 99.7% of particulates, .03 Microns
- Holds 20 scopes with secure adjustable mounting system
- Replaceable HEPA Filter system without removal of scopes
- Medical grade electrical system
- Tempered glass double doors
- Multiple locking options available including badge entry
- Easy to clean removable drip tray
- Harloff has Industry Best 12 year limited manufacturers warranty for Sales to US and Canada
- Overall cabinet dimensions: 93"H x 60"W x 24"D, ships as two separate cabinets.

COLORS

Available in more than twenty color options.
View them online: <https://www.harloff.com/finish-options/>



Includes Dri-Scope Aid®, industry leading internal lumen drying system

Please refer to Dri-Scope Aid® specification sheet for more information



Engineered &
Manufactured
in the U.S.



View similar products online at

<https://www.harloff.com/scope-drying-and-storage-cabinets/suredry-scope-cabinets/>

**Toll Free: (800) 433-4064 • medicalsales@harloff.com
www.harloff.com • Ph: (719) 637-0300**

The ultimate in Endoscope drying systems is now available! SureDry Scope Cabinets feature an external HEPA filtered positive pressure drying system. Dri-Scope Aid® is the industry leading internal lumen drying system. This combination provides facilities with the assurance that they will be able to meet all current and anticipated future guidelines for external and internal drying of endoscopes, providing their patients the best possible assurance of infection prevention.

DRI-SCOPE INTERNAL LUMEN DRYING SYSTEM



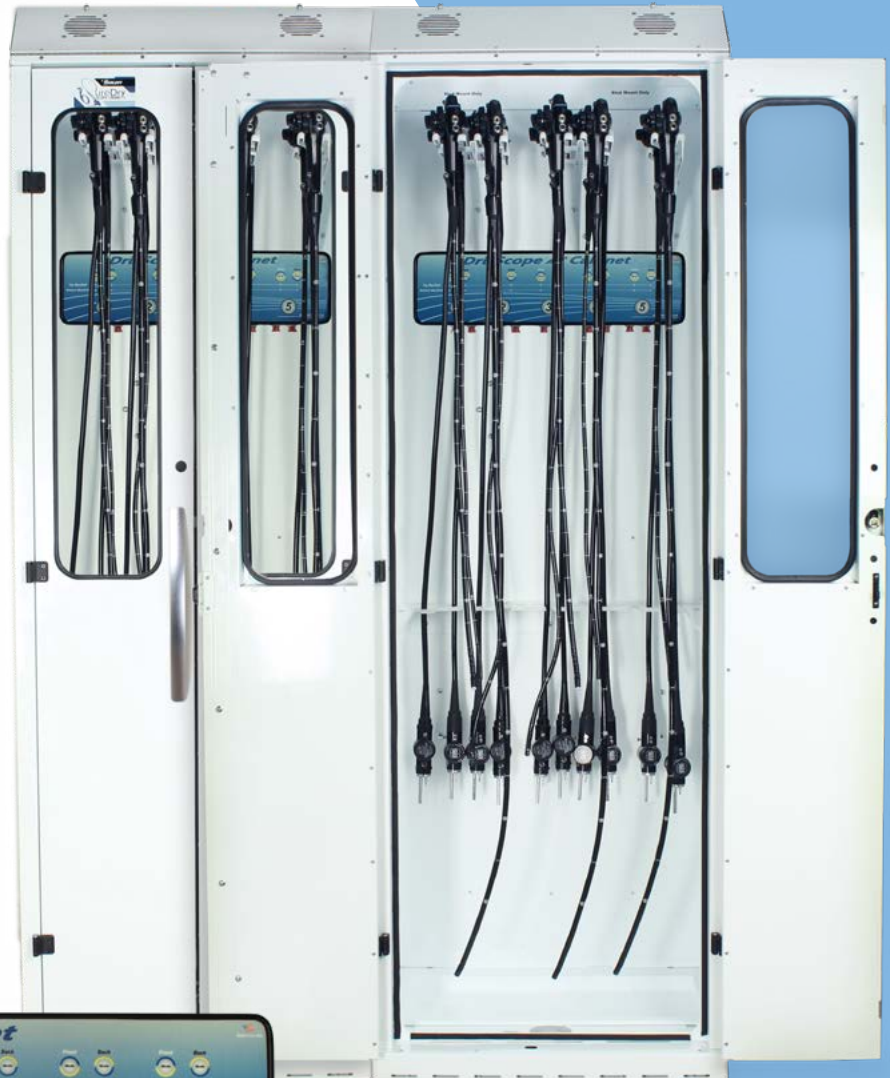
- Constant Flow
- Consistent Pressure
- Repeatable Results

FEATURES & BENEFITS

- Significantly improves drying of internal channels
- HEPA filter offers a 99.97% retention rate of particles that have a size $> 0.3\mu\text{m}$
- Provides constant air delivery through all internal endoscope channels
- Short drying cycle for quick turn-around time
- Continuous venting cycle for overnight storage
- Automatic high-pressure shutoff
- Fulfills forced air recommendations
- Self-adjusting high-pressure regulation

EASE OF OPERATION

- Hands-free operation
- Visual display of purging times
- Easy to attach disposable individual scope connectors to meet AORN and SGNA guidelines
- Simple to attach individual scope connectors
- Works with all major endoscope brands
- Filter replacement indicator light
- Dries 1 to 20 endoscopes



HARLOFF
INNOVATING STORAGE FOR CARE

Engineered &
Manufactured
in the U.S.



View similar products online at

<https://www.harloff.com/scope-drying-and-storage-cabinets/suredry-scope-cabinets/>

Toll Free: (800) 433-4064 • medicalsales@harloff.com
www.harloff.com • Ph: (719) 637-0300

The Dri-Scope Aid® Cabinet supplies HEPA-filtered air to all internal channels to aid in drying endoscopes with an automated drying cycle for improved turn-around time, and a continuous venting cycle for overnight storage. The Dri-Scope Aid® system in the SureDry Scope Cabinets provides a complete drying system for your facility.

Why is a positive pressure system important?

The unique design of the SureDry Scope Cabinet includes both top fans for intake and lower fans for exhaust. This push/pull design creates a vortex of air that flows through the cabinet ensuring maximum drying efficiency.

Intake: Intake airflow comes through separate HEPA filters (which remove 99.7% of particulates, .03 Microns) driven by fully redundant fans producing a positive pressure vortex from the cabinet top. This creates an even circular motion of airflow over all scopes.

Exhaust: The lower exhaust fans pull the circulated air out of the cabinet ensuring the flow of air is consistent from top to bottom, providing a complete drying system for the entire scope. This push/pull multiple fan system (an industry first) ensures a positive pressure system to meet all major guidelines and it ensures forced drying and equal drying levels across the full length of each and every scope.



ST91:2021

SureDry Cabinets are a Smart Choice to Meet and Exceed ANSI/AAMI ST91:2021 and Other Guidelines

The references below are taken from these guidelines. Channel drying available only with the addition of the Dri-Scope Aid® system.

☒ **Scopes Stored Vertically**

11.2.1 "stored vertically, the insertion tube should be as straight as possible, with the distal tip hanging freely."
11.2.1 "When flexible and semi-rigid endoscopes are hung in the vertical position, coiling or kinking is prevented."

☒ **Hanging Freely Without Coiling**

11.2.2 "should be stored in a cabinet that is of sufficient height, width, and depth to allow flexible endoscopes to hang vertically without coiling and without any components touching the bottom of the cabinet."

☒ **Channel Drying + Forced Air**

8.2.5.1 "Flexible endoscopes with channels should be dried for a minimum of 10-minutes with pressure-regulated forced instrument air or a minimum of HEPA-filtered air." | 8.2.5.2 Use pressure-regulated instrument air or HEPA-filtered air to dry the channels in accordance with the manufacturer's written IFU.

☒ **HEPA Filtered Positive Pressure**

11.2.2.2 Cabinets that enable circulation of HEPA-filtered or instrument air through the cabinet at... positive pressure.
NOTE: SureDry cabinets feature an industry leading 3 intake and 2 exhaust fan system.

☒ **Easy Scope Identification***

11.2.3 "Protocols should be developed to help ensure that users can readily identify an endoscope that has been processed and is ready for patient use." * Available with Tracker-equipped SureDry scope cabinets

☒ **Single-Use Connectors**

Use of single use connectors ensures no cross-contamination as well as simplifies staff efficiency.

☒ **Clinical Documentation**

ASGE "Drying the interior of an endoscope should use a sufficiently prolonged flow of medical air through all accessible channels, ideally simultaneously and for at least 10 minutes, for greatest efficiency." Per the study, "Multisociety guideline on reprocessing flexible GI endoscopes: 2016 update."
NOTE: SureDry cabinets are the only clinically proven vertical drying cabinet.

10 Reasons to Choose **HARLOFF** for Your Scope Cabinets



Industry Best Positive Pressure HEPA Filtered Drying System. Designed to add Dri-Scope Aid® now or later with easy “Plug & Play” installation.

1

A Smart Choice to Meet & Exceed Current SGNA, AORN and AAMI Guidelines

Proudly Made in the USA



Harloff products are proudly **Designed, Engineered and Manufactured in the United States** at our Colorado Springs, CO facility.

6

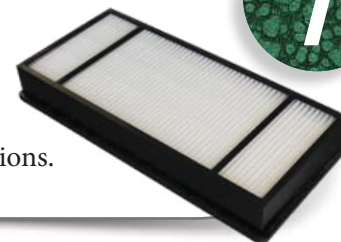
Dri-Scope Aid® Internal Lumen Drying System

HEPA filtered air to all internal channels on DSS3316 models only. Automated drying & continuous venting cycle for overnight storage. All SureDry cabinets are fully retrofittable with Dri-Scope Aid®.

2

Easy Access to HEPA Filters

Change HEPA filters **without opening the cabinet.** Save time and ensure no cycle interruptions.



7

Disposable Connectors

Save time and ensure compliance! Use single-use connectors for all internal channels of the endoscope. Part of the Dri-Scope Aid® package.



3

Keyed or Keyless Locks

Options include key locks, basic electronic push button locks, advanced keypads and proximity readers. View locking options online at www.harloff.com/locking-options/



8

Hooks and Holders for Specialized Scopes

Major brands to include **Fuji, Olympus, Pentax, Karl Storz and others.**



4

Scope Cabinet Finish Options

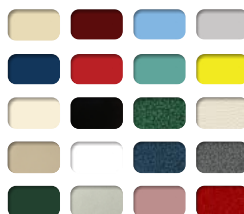
Choose Stainless Steel, Heat Sealed Powder Coat in High Gloss or Textured Low Gloss, or upgrade to an **antimicrobial finish.**

9

12 Year Warranty

Our Manufacturer's Warranty is Unmatched in the industry. We build our cabinets to last and we stand behind them.

5



Superior Color Choices

Over 20 Colors to choose from. Cabinets have a heat sealed powder coat finish inside and out. View color options online at www.harloff.com/finish-options/

10