



HEAT SEALED POWDER COAT STEEL PASS THROUGH 10 SCOPE CAPACITY CABINET, KEY LOCK

SC80WTD RDP-10

*Also available
in a Stainless Steel Finish*

FEATURES

- **Double sided pass through cabinet allows access between both procedure and reprocessing rooms**
- In-wall system with multiple available locking options
- Positive pressure fully redundant fan system
- Industries only unit with 4 intake and 2 exhaust fans
- Fan run time is fully adjustable and activated each time cabinet is closed
- HEPA filter removes 99.7% of particulates, .03 Microns
- Easy to clean removable dual drip trays
- Holds 10 scopes with our secure adjustable mounting system
- Replaceable HEPA Filter system without removal of scopes
- Medical grade electrical system
- Tempered glass doors, one on each side
- Cabinets are delivered fully assembled
- Harloff has Industry Best 12 year limited manufacturers warranty for Sales to US and Canada



Scopes not
included

COLORS

Available in more than twenty color options.

View them online: <https://www.harloff.com/finish-options/>

Simple “Plug and Play” upgradeable with Dri-Scope Aid®, industry leading internal lumen drying system

HARLOFF
INNOVATING STORAGE FOR CARE

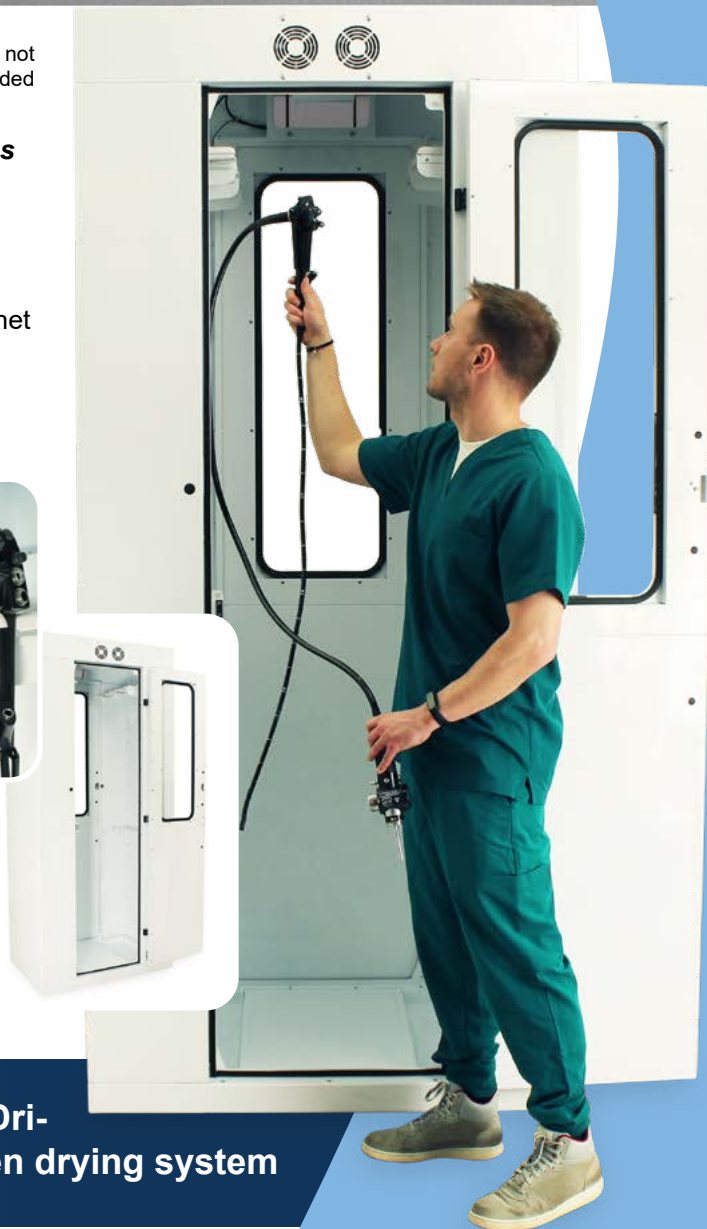
Engineered &
Manufactured
in the U.S.



View similar products online at
<https://www.harloff.com/suredry-scope-cabinets/>

**Toll Free: (800) 433-4064 • medicalsales@harloff.com
www.harloff.com • Ph: (719) 637-0300**

The SureDry Scope Cabinet includes the industry best Positive Pressure HEPA Filtered Drying system. Inside air is replaced inside the cabinet 4 times per minute.



Why is a positive pressure system important?

The unique design of the SureDry Scope Cabinet includes both top fans for intake and lower fans for exhaust. This push/pull design creates a vortex of air that flows through the cabinet ensuring maximum drying efficiency.

Intake:

Intake Airflow comes through 3 Separate HEPA filters (removes 99.7% of particulates, .03 Microns) driven by 3 fully redundant fans producing a positive pressure vortex from the top of the cabinet. This creates a circular motion of airflow evenly over all scopes.

Exhaust:

The lower exhaust fans pull the circulated air out of the cabinet ensuring the flow of air is consistent from top to bottom, providing a complete drying system for the entire scope. This push pull multiple fan system, an industry first, ensures not only a positive pressure system to meet all major guidelines but also ensures forced drying and equal levels across each and every scope across it's full length.



A Smart Choice to Meet & Exceed Current AORN, SGNA and AAMI Guidelines

Scope Storage Guidelines	Forced Air Drying	HEPA Filtered Air	Hang Scopes Vertically	Scopes Must Hang Freely, No Touching or Coiling	Easy to Clean and Disinfect	Closed Door Cabinet	Positive Air Pressure	Circulated Air Environment	Connectors — Use Disposables or Reusables Stored w/Scopes	Dry Scopes Completely	Use Channel Drying*
AORN	no data	✓	✓	✓	✓	✓	✓	✓	✓	no data	no data
SGNA	✓	✓	✓	✓	✓	no data	no data	no data	✓	✓	no data
AAMI	✓	✓	✓	✓	✓	✓	✓	✓	✓	✓	✓

Harloff Scope Cabinets Meet & Exceed These Guidelines (*Channel Drying Available Only with Dri-Scope Aid®)

10 Reasons to Choose **HARLOFF** for Your Scope Cabinets

*A Smart Choice to Meet & Exceed Current
SGNA, AORN and AAMI Guidelines*



1 *Industry Best Positive Pressure HEPA
Filtered Drying System.* Designed to add Dri-Scope
Aid® now or later with easy “Plug & Play” installation.

Proudly Made in the USA



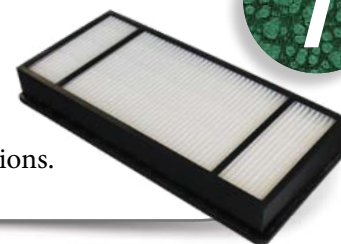
6 Harloff products are proudly
*Designed, Engineered and
Manufactured in the United States*
at our Colorado Springs, CO facility.

Dri-Scope Aid® Fully Retrofittable in Field

2 All SureDry scope cabinets are fully designed to be
field installed with the industry best Dri-Scope Aid®
lumen drying system, which provides HEPA
filtered air to each internal scope channel.

Easy Access to HEPA Filters

Change HEPA filters
*without opening the
cabinet.* Save time and
ensure no cycle interruptions.



LED Lighting Option

3 *Brighten your cabinet*
and easily inspect scopes
with fully dimmable optional
overhead LED lighting which
triggers on door open/close.



Keyed or Keyless Locks

Options include key locks,
basic electronic push
button locks, advanced
keypads and proximity
readers. View locking options online
at www.harloff.com/locking-options/



Hooks and Holders for Specialized Scopes

4 Major brands to include
Fuji, Olympus, Pentax, Karl Storz and others.

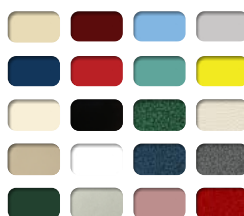


Scope Cabinet Finish Options

9 Choose Stainless Steel, Heat Sealed Powder
Coat in High Gloss or Textured Low Gloss, or
upgrade to an *antimicrobial finish.*

12 Year Warranty

5 *Our Manufacturer's
Warranty is Unmatched* in the
industry. We build our cabinets to
last and we stand behind them.



Superior Color Choices

10 *Over 20 Colors* to choose from.
Cabinets have a heat sealed powder coat
finish inside and out. View color options
online at www.harloff.com/finish-options/