

STAINLESS STEEL HIGH VOLUME 16 SCOPE CAPACITY CABINET, E-LOCK



SCSS8044DREDP-DSS3316

Scopes not
included

Engineered &
Manufactured
in the U.S.



FEATURES

- **Industries most spacious scope cabinet allows for easy hanging and retrieval of all scope types**
- Positive pressure fully redundant fan system
- Industries only unit with 3 intake and 2 exhaust fans
- Fan run time is fully adjustable and activated each time cabinet is closed
- HEPA filter removes 99.7% of particulates, .03 Microns
- Holds 16 scopes with our secure adjustable mounting system
- Replaceable HEPA Filter system without removal of scopes
- Medical grade electrical system
- Tempered glass double doors
- Multiple locking options available including badge entry
- Easy to clean removable drip tray
- Cabinets are delivered fully assembled
- Harloff has Industry Best 12 year limited manufacturers warranty for Sales to US and Canada
- Cabinet dimensions: 93" H x 44" W x 24" D
- Stainless steel is commonly used in the manufacturing of medical devices due to its rust and corrosion resistance, anti-bacterial properties and ease of cleaning and sterilization.



**Includes Dri-Scope Aid®, the
industry leading internal lumen
drying system**

The ultimate in Endoscope drying systems is now available! SureDry Scope Cabinets feature an external HEPA filtered positive pressure drying system. Dri-Scope Aid® is the industry leading internal lumen drying system. This combination provides facilities with the assurance that they will be able to meet all current and anticipated future guidelines for external and internal drying of endoscopes, providing their patients the best possible assurance of infection prevention.

View similar products online at

<https://www.harloff.com/scope-drying-and-storage-cabinets/suredry-scope-cabinets/>

HARLOFF
INNOVATING STORAGE FOR CARE

Toll Free: (800) 433-4064
medicalsales@harloff.com
www.harloff.com
Ph: (719) 637-0300



DRI-SCOPE INTERNAL LUMEN DRYING SYSTEM

- Constant Flow
- Consistent Pressure
- Repeatable Results

FEATURES & BENEFITS

- Significantly improves drying of internal channels
- HEPA filter offers a 99.97% retention rate of particles that have a size $> 0.3\mu\text{m}$
- Provides constant air delivery through all internal endoscope channels
- Short drying cycle for quick turn-around time
- Continuous venting cycle for overnight storage
- Automatic high-pressure shutoff
- Fulfills forced air recommendations
- Self-adjusting high-pressure regulation

EASE OF OPERATION

- Hands-free operation
- Visual display of purging times
- Simple to attach individual scope connectors
- Works with all major endoscope brands
- Filter replacement indicator light
- Dries 1 to 16 endoscopes

OVERALL CABINET DIMENSIONS

- 93" H x 44" W x 24" D

The Dri-Scope Aid® Cabinet supplies HEPA-filtered air to all internal channels to aid in drying endoscopes with an automated drying cycle for improved turn-around time, and a continuous venting cycle for overnight storage. The Dri-Scope Aid® system in the SureDry Scope Cabinets provides a complete drying system for your facility.



Engineered &
Manufactured
in the U.S.



View similar products online at

<https://www.harloff.com/scope-drying-and-storage-cabinets/suredry-scope-cabinets/>

Toll Free: (800) 433-4064 • medicalsales@harloff.com
www.harloff.com • Ph: (719) 637-0300

Why is a positive pressure system important?

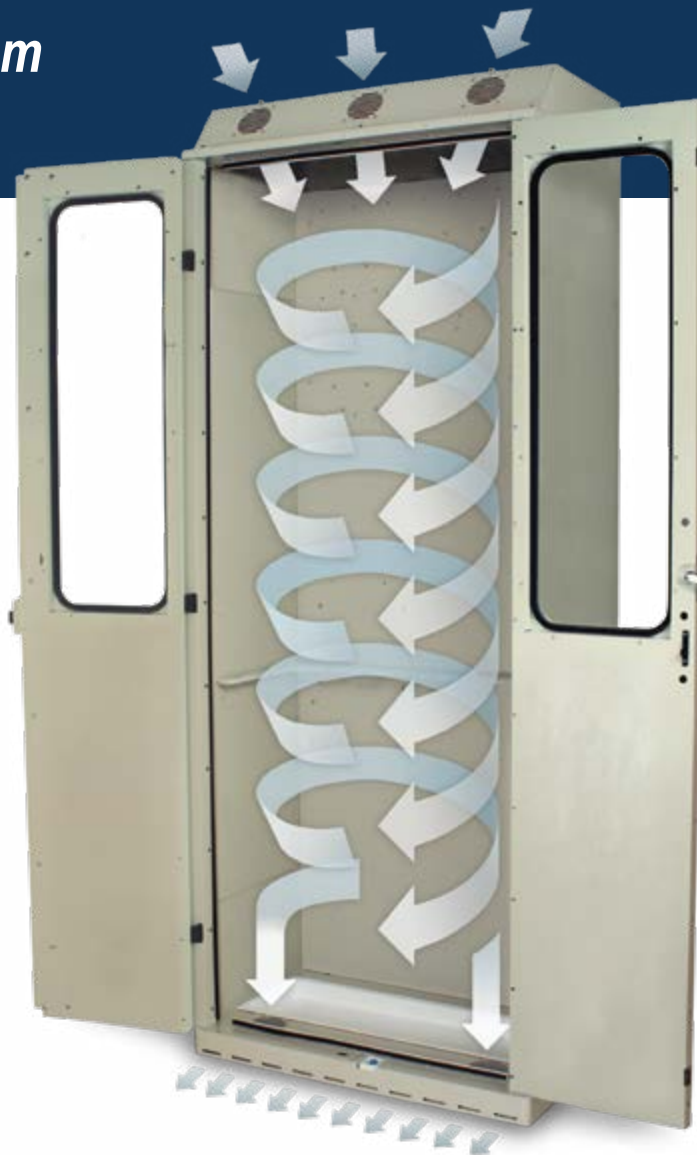
The unique design of the SureDry Scope Cabinet includes both top fans for intake and lower fans for exhaust. This push/pull design creates a vortex of air that flows through the cabinet ensuring maximum drying efficiency.

Intake:

Intake Airflow comes through 3 Separate HEPA filters (removes 99.7% of particulates, .03 Microns) driven by 3 fully redundant fans producing a positive pressure vortex from the top of the cabinet. This creates a circular motion of airflow evenly over all scopes.

Exhaust:

The lower exhaust fans pull the circulated air out of the cabinet ensuring the flow of air is consistent from top to bottom, providing a complete drying system for the entire scope. This push pull multiple fan system, an industry first, ensures not only a positive pressure system to meet all major guidelines but also ensures forced drying and equal levels across each and every scope across it's full length.



A Smart Choice to Meet & Exceed Current AORN, SGNA and AAMI Guidelines

Scope Storage Guidelines	Forced Air Drying	HEPA Filtered Air	Hang Scopes Vertically	Scopes Must Hang Freely, No Touching or Coiling	Easy to Clean and Disinfect	Closed Door Cabinet	Positive Air Pressure	Circulated Air Environment	Connectors — Use Disposables or Reusables Stored w/Scopes	Dry Scopes Completely	Use Channel Drying*
AORN	no data	✓	✓	✓	✓	✓	✓	✓	✓	no data	no data
SGNA	✓	✓	✓	✓	✓	no data	no data	no data	✓	✓	no data
AAMI	✓	✓	✓	✓	✓	✓	✓	✓	✓	✓	✓

Harloff Scope Cabinets Meet & Exceed These Guidelines (*Channel Drying Available Only with Dri-Scope Aid®)

10 Reasons to Choose **HARLOFF** for Your Scope Cabinets



1 *Industry Best Positive Pressure HEPA Filtered Drying System.* Designed to add Dri-Scope Aid® now or later with easy “Plug & Play” installation.

A Smart Choice to Meet & Exceed Current SGNA, AORN and AAMI Guidelines

Proudly Made in the USA



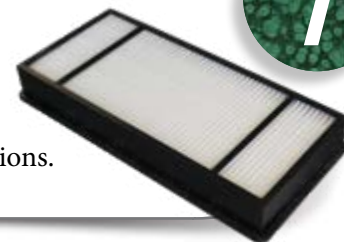
6 Harloff products are proudly *Designed, Engineered and Manufactured in the United States* at our Colorado Springs, CO facility.

Dri-Scope Aid® Internal Lumen Drying System

2 *HEPA filtered air to all internal channels* on DSS3316 models only. Automated drying & continuous venting cycle for overnight storage. All SureDry cabinets are fully retrofittable with Dri-Scope Aid®.

Easy Access to HEPA Filters

Change HEPA filters *without opening the cabinet.* Save time and ensure no cycle interruptions.



Disposable Connectors

3 *Save time and ensure compliance!* Use single-use connectors for all internal channels of the endoscope. Part of the Dri-Scope Aid® package.



Keyed or Keyless Locks

Options include key locks, basic electronic push button locks, advanced keypads and proximity readers. View locking options online at www.harloff.com/locking-options/



Hooks and Holders for Specialized Scopes

4 Major brands to include *Fuji, Olympus, Pentax, Karl Storz and others.*

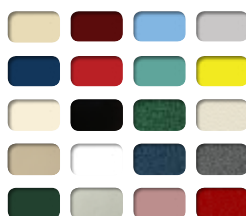


Painted/Stainless Steel Options

9 Choose Stainless Steel, Heat Sealed Powder Coat in High Gloss or Textured Low Gloss, or upgrade to an *antimicrobial paint finish.*

12 Year Warranty

5 *Our Manufacturer's Warranty is Unmatched* in the industry. We build our cabinets to last and we stand behind them.



Superior Color Choices

10 *Over 20 Colors* to choose from. Cabinets are heat sealed powder coat painted inside and out. View color options online at www.harloff.com/finish-options/