

Emergency  
Crash Carts



Isolation and  
PPE Carts



Anesthesia Carts



Treatment and  
Procedure Carts



Treatment and  
Procedure Carts



Endoscopy Products



Medication Carts



MedStor Max  
Medical Storage



**HARLOFF**  
INNOVATING STORAGE FOR CARE

WE HAVE THE MOST  
**EXTENSIVE**  
SELECTION OF  
MEDICAL CARTS  
AND CABINETS IN  
THE INDUSTRY

# CUSTOMER SERVICE



650 Ford Street  
Colorado Springs, CO 80915

Toll Free: (800) 433-4064

Phone: (719) 657-0300

Email: [medicalsales@harloff.com](mailto:medicalsales@harloff.com)

Online: [www.harloff.com](http://www.harloff.com)

## CUSTOMER SERVICE HOURS

**Monday - Friday**  
**10am - 6:30pm Eastern**  
**9am - 5:30pm Central**  
**8am - 4:30pm Mountain**  
**7am - 3:30pm Pacific**

## TERMS OF SALE

- Net 30 days for established customers.
- Visa, MasterCard, American Express, ACH and wire transfers accepted.
- C.O.D. shipments are not available.

## WARRANTIES

- 12-year limited warranty on parts manufactured by Harloff.
- 1-year limited warranty on parts and hardware purchased by Harloff.
- Please contact customer service for additional details.

## PLACING AN ORDER

- Orders can be received by fax, mail, email, or sent EDI with established partners.
- Orders for heat sealed powder coat painted products must specify a color to be considered complete and entered for production.
- Order acknowledgments will be sent within 24 hours to confirm details of order, i.e. products ordered, pricing and estimated ship date.
- All changes to purchase orders must be confirmed by hard copy.

# QUICK SHIP OPTIONS

## QUICK SHIP CARTS

### INFECTION CONTROL CARTS

**Color:** Yellow | **Quantity:** 5 or less

**Lead Time:** 5 – 6 business days

**M3DS1830K04Q** Page 55

**M3DS1830K04-PPE** Page 54

**RRC334YL**

**MDS3030K04Q** Page 54

### EMERGENCY CRASH CARTS

**Color:** Red

**Quantity:** 5 or less

**Lead Time:**

5 business days



**MDS3030B06-EMG1Q** Page 38

**MDS3030B06Q** Page 39

**MDS3024B14-EMG1Q** Page 39

### PROCEDURE CARTS

**Color:** Sand | **Quantity:** 5 or less

**Lead Time:** 5 business days

**MDS3030K06Q** Page 47

**RRC344SD**

### LONG TERM CARE CARTS

**Color:** Sand

**Quantity:** 5 or less

**Lead Time:**

5 business days

**SL600PCHBG** Page 78

**VLT360PCQ** Page 79

**VLT480PCQ** Page 79



### NARCOTICS CABINETS

**Color:** Beige

**Quantity:** 5 or less

**Lead Time:**

5 business days

**2803AQ** Page 85

**2810AQ** Page 86

**2820AQ** Page 85

**2801AQ** Page 86

**2802AQ** Page 85

**2830AQ** Page 85

**2811AQ** Page 86

**2825AQ** Page 85



Look for this logo near to products in this catalog to know if an item has a quick ship option

Quick Ship products are a selection of our most popular models that usually ship within a week or less so you can get back to work.

Products included in the this program are subject to change without notice. Please consult the Harloff website for the most up to date Quick Ship options.

# TABLE OF CONTENTS



<b>GI/Endoscopy Carts and Cabinets .....</b>	<b>5</b>
Endoscope Drying Cabinets.....	6
ENT and Bronchoscope Drying Cabinets .....	14
Dilator Drying Carts.....	15
Scope Drying Storage and Transport Carts.....	16
<b>MedStor Max Medical Storage .....</b>	<b>19</b>
<b>A-Series and M-Series Carts .....</b>	<b>29</b>
A-Series and M-Series Options .....	34
Wood Grain Finish Carts .....	35
<b>Emergency Crash Carts .....</b>	<b>37</b>
Pediatric Emergency Carts .....	43
<b>Custom and Unique Projects .....</b>	<b>44</b>
<b>Anesthesia Carts .....</b>	<b>45</b>
<b>Infection Control and Isolation Carts .....</b>	<b>53</b>
PPE Carts/Vaccine Carts .....	54
Phlebotomy and IV Start Carts .....	55
<b>Treatment and Procedure Carts .....</b>	<b>57</b>
<b>Small Cart Accessories .....</b>	<b>61</b>
<b>MRI Safe Carts .....</b>	<b>69</b>
<b>Malignant Hyperthermia Carts .....</b>	<b>71</b>
<b>Specialty Carts .....</b>	<b>73</b>
Cast Carts .....	74
IntraOcular Lens Carts .....	75
Suture Carts .....	75
<b>Medication Carts .....</b>	<b>77</b>
Punch Card Carts .....	78
Med-Bin Carts .....	80
Multi-Dose, Unit-Dose, Dispill, MOT, Cassettes .....	81
Wood Vinyl Medication Carts .....	83
<b>Narcotics and Medication Cabinets .....</b>	<b>84</b>
<b>Small Cart and Cabinet Locking Options .....</b>	<b>88</b>
<b>Color Options .....</b>	<b>91</b>
<b>Partner with Harloff .....</b>	<b>92</b>



# ABOUT HARLOFF

## **Company History and Product Offerings**

*The Harloff Company was founded in 1951 by Norman Harloff with the creation of the first Hotel Maid Cart.*

*In 1987 Harloff launched its healthcare line. Designed from the ground up, this line offered many innovative features that have now become industry standards, such as ball-bearing drawer slides and easily customized drawer configurations.*

*We now offer a comprehensive array of Large Storage Cabinets, Crash Carts, Anesthesia Carts, Isolation Carts, Medication Carts, Vaccine Storage Carts and Narcotics Cabinets for a variety of hospitals, nursing homes, clinics, schools, surgery centers, pharmacies, rehab centers and various other medical facilities. We also produce a diverse selection of specialty clinical products that include MRI-Safe Anesthesia and Emergency Carts, Stainless Steel Casting Carts and Malignant Hyperthermia Carts.*

*Our most recent product additions include SureDry scope cabinets with optional Dri-Scope Aid®, the industry leading internal lumen drying system, M-Series and A-series carts and our redesigned MedStor Max medical storage cabinet line*

*With our vast selection of standard carts/cabinets and accessories, you will be sure to find the cart you want with the configuration you need. If you can't find exactly what your facility requires within our current product offering, contact our experienced design and engineering team so they can build the ideal custom solution to meet all your storage, delivery and security needs!*

## **Manufacturing excellence**

*We offer the widest variety of medication and health care carts in the industry. We are pleased to be recognized for providing the highest quality medical carts & cabinets found within today's industry as the quality of our products is matched only by our commitment to outstanding Customer Service. At Harloff, our goal is to exceed the highest expectations of every customer, every day.*



## THE HARLOFF VALUE PROPOSITION

- *Comprehensive and Flexible Product lines – Multiple styles of standard product for most commonly selected requirements with a broad range of standard accessories*
- *Long experience in meeting custom requirements – In-house engineering, design flexibility and fabrication skill in multiple materials*
- *Industry reputation for quality, convenience, on-time delivery, strong sales support and service with a single point of contact – Sales, customer service and manufacturing are all housed in a single US-based facility*



## **Made in the USA**

*Harloff products are proudly manufactured in Colorado Springs, Colorado. Our principal sales network utilizes the top national and international distributors within the industry as well as independent sales representatives who have a wealth of knowledge about everything Harloff has to offer.*



## **Worldwide Distribution**

*The Harloff story starts with a 70 year history of quality products, service and delivery. Harloff remains committed to top drawer, U.S. made quality, world class service, exceptional on-time delivery and investment in research and development. Our team is committed to maintaining and growing this legacy.*





# SMALL AND LARGE SCOPE DRYING SOLUTIONS FOR YOUR FACILITY!

*Harloff's versatile cabinets can be used for the storage or drying of your facility's EGD scopes, colonoscopes, EUS scopes, ERCP scope, TEE probes, bronchoscopes, cystoscopes and ENT scopes.*

## ENDOSCOPY CABINETS

*Harloff offers a full line of GI scope drying and storage products. Our flagship SureDry scope cabinet provides storage and drying for endoscopes with optional channel drying available with the purchase of Dri-Scope Aid®, the industry leading internal lumen drying system.*

*Our in-house design and manufacturing team allows us to build multiple solutions for your endoscopy facility including pass through scope cabinets, mobile cabinets and customizations such as additional heights, slimmer widths, door variants and much more.*



Engineered and  
Manufactured in the U.S.



SC8036DRDP-14



**SureDry**  
SCOPE CABINETS

## ENDOSCOPE DRYING

### CHOICE OF 3 WIDTHS

*Harloff scope cabinets come in three widths; choose the size you want based upon the volume of scopes you plan to use, your available square footage and how much interior cabinet space you want for scopes.*

**Need it larger? We build 60" wide cabinets too!**

## OUR FAMILY OF SCOPE DRYING CABINETS CAN FULFILL THE REQUIREMENTS OF ANY FACILITY!

### 30" WIDTH

10 scope, 5 scope or custom setup



*This slim profile scope cabinet is ideal for facilities with fewer scopes or limited available floor space. For configurations that use Dri-Scope Aid®, this cabinet uses the smaller 5-scope manifolds.*

### 36" WIDTH

14, 12 or 8 scope or custom setup



*Our standard scope cabinet size is able to accommodate multiple capacities and multiple configurations of different scope types. For customers who purchase the internal lumen drying package, it fits the standard 8-scope Dri-Scope Aid® manifold.*

### 44" WIDTH

16 scope, 8 scope or custom setup



**STAINLESS  
STEEL**

*Perfect for busy units with high traffic and frequent scope changeouts, this high volume cabinet has a wider profile and increased spacing between scope holders for easy access. This is the industry's most spacious scope cabinet, allowing for easy hanging and retrieval of all scope types.*

## SC80WTD RDP-10-DSS2305

All the features of the standard pass through scope cabinet but also comes equipped with Dri-Scope Aid®, the industry best lumen drying system. An optional customizable hang time monitor is also available.



**SureDry**  
SCOPE CABINETS

## ENDOSCOPE DRYING

### PASS THROUGH CABINET SC80WTD RDP-10



*This double sided pass through cabinet allows access between both procedure and reprocessing rooms. This in-wall system has multiple available locking options and can hold up to 10 scopes with our secure adjustable mounting system. Each cabinet comes with 4 intake and 2 exhaust fans and tempered glass doors, one on each side. Other features include easy to clean removable dual drip trays, a HEPA Filter system that can be replaced without the removal of scopes and SureDry's positive pressure fully redundant fan system.*



## FEATURES & BENEFITS OF DRI-SCOPE AID®

- Significantly improves drying of internal channels
- HEPA filter offers a 99.97% retention rate of particles that have a size > 0.3µm
- Provides constant air delivery through all internal endoscope channels

- Short drying cycle for quick turn-around time
- Continuous venting cycle for overnight storage
- Automatic high-pressure shutoff
- Fulfills forced air recommendations
- Self-adjusting high-pressure regulation

### EASE OF OPERATION

- Hands-free operation with visual display of purging times
- Simple to attach individual scope connectors
- Works with all major endoscope brands
- Disposable connectors to meet SGNA and AORN guidelines
- Dries 1 to 16 endoscopes





**SureDry**  
SCOPE CABINETS

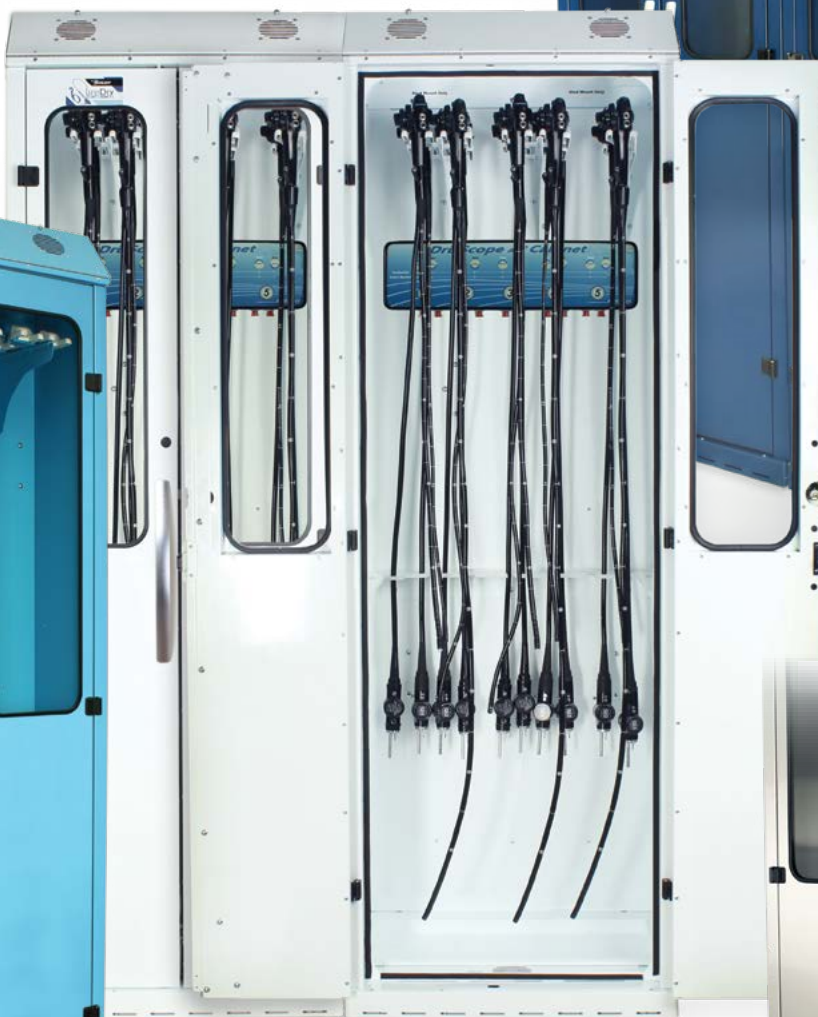
## ENDOSCOPE DRYING

SC8060DRDP-2DSS2310

### CUSTOM SCOPE CABINET OPTIONS

One of the many strengths of Harloff is our unparalleled ability to create custom solutions. Examples include extra tall cabinets like the SC9436DRDP which are for longer endoscopes, and feature an extended base. Our double wide SC8060DRDP-2DSS2310 provides an even higher endoscope capacity and our mobile kit allows any scope cabinet to become mobile rather than stationary. Mobile cabinets permit usage in multiple areas of your facility and also can be transported to other areas for cleaning.

### SC9436DRDP



### SC8030-MOBILEKIT

Any size of scope cabinet can be converted into a mobile version with the addition of this mobile kit. Includes four 3" casters plus a steel mounting plate. Available in stainless steel or heat sealed powder coat steel. Factory install only.



# WHY IS A POSITIVE PRESSURE SYSTEM IMPORTANT?



# ENDOSCOPE DRYING

The unique design of the SureDry Scope Cabinet includes both top fans for intake and lower fans for exhaust. This push/pull design creates a vortex of air that flows through the cabinet ensuring maximum drying efficiency.

## INTAKE

Intake Airflow comes through separate HEPA filters (which remove 99.7% of particulates, .03 Microns) driven by fully redundant fans producing a positive pressure vortex from the top of the cabinet. This creates an even circular motion of airflow over all scopes.

## EXHAUST

The lower exhaust fans pull the circulated air out of the cabinet ensuring the flow of air is consistent from top to bottom, which provides a complete drying system for the entire scope. This push/pull multiple fan system - an industry first - ensures not only a positive pressure system to meet all major guidelines but also ensures forced drying and equal drying levels across the full length of each and every scope.



## SureDry Cabinets: A Smart Choice

to Meet and Exceed Current AORN, SGNA and AAMI Guidelines

Scope Storage Guidelines	Forced Air Drying	HEPA Filtered Air	Hang Scopes Vertically	Scopes Must Hang Freely, No Touching or Coiling	Easy to Clean and Disinfect	Closed Door Cabinet	Positive Air Pressure	Circulated Air Environment	Connectors — Use Disposables or Reusables Stored w/Scopes	Dry Scopes Completely	Uses Channel Drying (with Dri-Scope Aid®)
AORN	no data	✓	✓	✓	✓	✓	✓	✓	✓	no data	no data
SGNA	✓	✓	✓	✓	✓	no data	no data	no data	✓	✓	no data
AAMI	✓	✓	✓	✓	✓	✓	✓	✓	✓	✓	✓
ANSI/AAMI ST91:2021		SureDry scope cabinets, with or without Dri-Scope Aid®, meet and exceed updated guidelines									



**SureDry**  
SCOPE CABINETS

## ENDOSCOPE DRYING

### 44" WIDE CABINETS

With increased storage capacity and maximum maneuverability for the attachment and removal of scopes, this 44" wide high volume 16-scope cabinet from Harloff is the ideal endoscope cabinet storage and drying solution for busy gastroenterology facilities.

- Meets or exceeds most recent JC, AORN, SGNA, and AAMI guidelines.
- Positive pressure fully redundant fan system
- Industry's only unit with 3 intake and 2 exhaust fans
- Fan run time is fully adjustable and activated each time cabinet is closed
- HEPA filter removes 99.7% of particulates, .03 Microns
- Industry's first replaceable HEPA Filter system without scope removal
- Holds 16 scopes with secure adjustable mounting system
- Medical-grade electrical system
- Tempered glass double doors
- Easy to clean removable drip tray
- Multiple locking options available including badge entry
- Scope cabinets are delivered fully assembled
- Harloff has Industry Best 12 year manufacturers warranty for Sales to US and Canada
- Overall cabinet dimensions: 93"H x 44"W x 24"D

• **Color Options:**

Stainless Steel or heat sealed powder coat low carbon steel available in over twenty color options

SCSS8044DREDP

STAINLESS  
STEEL

With the largest interior volume and most distance between mounted scopes, the 44" wide cabinet makes hanging and retrieval of endoscopes super easy!

SC8044DRDP

## CHANNEL DRYING?

Updated ANSI/AAMI ST91:2021 guidelines recommend that "flexible endoscopes with channels should be dried for a minimum of 10 minutes with pressure-regulated forced instrument air or a minimum of HEPA-filtered air."

All Harloff scope cabinets meet these requirements by drying scopes with HEPA-filtered air, but for the most effective scope drying it is recommended that your scope cabinet be equipped with Dri-Scope Aid® for channel drying. We manufacture all of our scope cabinets for easy installation of Dri-Scope Aid®, either at the point of purchase or later in the field.

**THIS HIGH VOLUME SCOPE DRYING CABINET IS THE INDUSTRY'S MOST SPACIOUS FOR HANGING SCOPES!**



# SureDry ENDOSCOPE DRYING

SCOPE CABINETS with *Dri-Scope Aid®*



SC8044DRDP-DSS3316

SCSS8044DRDP-DSS3316

All SureDry scope cabinets are fully designed to be purchased with Dri-Scope Aid®, the industry best lumen drying system, or field installed with easy “Plug & Play” installation to provide HEPA filtered air to each internal scope channel.



STAINLESS  
STEEL

View scope  
cabinet locking  
options on  
page 90

## WHAT DO RECENT ANSI/AAMI ST91:2021 AND ASGE STUDIES REVEAL ABOUT THE BENEFITS OF USING DRI-SCOPE AID®

### WHAT DO NEWLY RELEASED GUIDELINES TELL US ABOUT THE DRYING AND STORAGE OF REPROCESSED ENDOSCOPES?

Both the U.S. Multi-Society Task Force and the American National Standards Institute (ANSI)/Association for the Advancement of Medical Instrumentation (AAMI) reference the Barakat 2019 study<sup>1</sup>, in which

the Dri-Scope Aid® system was used to successfully purge moisture from endoscope channels. The studies state, “Barakat et al. [78] demonstrated only a single water droplet in 69 endoscope cycles following ten minutes of ‘automated’ forced filtered air purge of all channels, compared to modest numbers of persistent droplets after five minutes and extensive fluid after manual targeting

of channels with a forced air gun.” SureDry scope cabinets from Harloff, paired with the Dri-Scope Aid lumen drying system, provide optimal drying of both the exterior and interior of endoscopes for quick, efficient drying of all endoscope types.

1. Barakat MT, Huang RJ, Banerjee S. Comparison of automated and manual drying in the elimination of residual endoscope working channel fluid after reprocessing. GIE Journal. 89(1):124-132.e2, 2019



**SureDry**  
SCOPE CABINETS

## ENDOSCOPE DRYING

SCSS8036DRDP-14

**OPTIONAL DIMMABLE LED  
LIGHTING NOW AVAILABLE  
TO INSTALL IN ANY CABINET!**



### 30" WIDE - SC8030DRDP-DSS2310

*This 30" wide slim profile scope cabinet can be set up in 10, 8 or 5 scope hanging configurations. Ideal for facilities with fewer scopes or with limited available floor space, this smaller footprint cabinet uses it's top two intake fans and one bottom exhaust fan to create the same positive pressure airflow drying as our larger cabinets. Comes installed with the Dri-Scope Aid® internal lumen drying system.*



STAINLESS  
STEEL

### 36" WIDE - SC8036DRDP-14

*Our standard scope cabinet size can accommodate multiple capacities and configurations of scope types including bronchoscopes, cystoscopes and TEE probes. This cabinet can be set up with 16, 14, 12, 9 or 8 scope capacity configurations. The timer sets the drying time with both doors closed, and automatically resets when doors open. The default runtime is 90 minutes, but can be set anywhere from 10 minutes to 180 hours. It can fit a standard 8-scope Dri-Scope Aid® manifold if you purchase the internal lumen drying package.*





# ENDOSCOPE DRYING

## SC8036TKDP-14

*This cabinet has the same SureDry features as Harloff's other models, but features a key locking roll top tambour door that recesses into the cabinet ceiling rather than a glass or solid door. An ergonomic handle is built into the middle of the door so that opening and closing it requires no stooping and minimal effort.*

## SC8036DRDP-14-DSS3316

## SC8030DRDP



## SLIMLINE CABINETS

*Standard SureDry cabinets have a 24" cabinet depth, but some facilities require the slimmest, most space saving options available. Our Slimline scope cabinet has a 18" cabinet depth, ideal for hallways and other tight spots.*



*Another space saver is our SC5430DRDP 3/4 height scope cabinet, available in all three cabinet widths for facilities with shorter ceiling heights.*

STAINLESS  
STEEL

## SCSS8036DRDP-14-DSS3316



# ENT/BRONCHOSCOPE DRYING

## SCW2430DRDP

- HEPA filtered Positive Pressure with two High Volume intake fans and one exhaust fan
- Customizable scope holders to fit most common scope types
- Holds up to 6 ENT Scopes
- Glass paneled doors for easy viewing of scope inventory
- Adjustable timer (10 to 180 mins) for fan operation.
- Fans activated automatically upon closing of doors
- Industry best 12 year limited manufacturer's warranty
- Ideal for non-connected or removable video/light processor cord
- Cabinet dimensions: 30"H x 24"W x 12"D



**An optional LED-UV disinfection strip helps to keep scopes sterilized!**

**These new wall mount bronchoscope & ENT scope cabinets allow for small scopes to be dried in the same safe, efficient manner as scopes in other parts of the facility.**

## SCW2448DRDP

- HEPA filtered Positive Pressure with two High Volume intake fans and one exhaust fan
- Customizable scope holders to fit most common scope types
- Holds up to 4 bronchoscopes
- Glass paneled doors for easy viewing of scope inventory
- Adjustable timer (10 to 180 mins) for fan operation.
- Fans activated automatically upon closing of doors
- Industry best 12 year limited manufacturer warranty
- Cabinet dimensions: 48"H x 24"W x 12.75"D



**Vertically hang up to 24 dilators for channel drying, exterior drying and storage. Short cabinets can hold dilators up to 28" long while tall cabinets can hold dilators up to 39" in length.**

## DSC24TK-DP

- Positive pressure fan system dries Bougie dilators, Savary-Gilliard® dilators & other wire guided dilators
- Includes 4 pull out slides that each hold six dilators for easy access to similar sized dilators at one time
- Replaceable HEPA Filter removes 99.7% of particulates, .03 Microns
- Fan run time (from 10-180 minutes) is fully adjustable and activated each time the cabinet door is closed
- Durable, scratch resistant heat sealed powder coat finish
- Each dilator storage cart can hold up to 24 individual dilators, varying in size from 5mm (15 French) to 20mm (60 French) and up to 28" in length
- Choice of lock options: keyless, latch lock, standard key lock or standard electronic lock



## DSC24SK-DP



## DSC36TK-DP

*This high volume cabinet is recommended for facilities and clinics with a large quantity of dilators - typically more than 20 - as it can store up to 36 Bougie or Savary-Gilliard® dilators.*



## DSC36SK-DP



# SCOPE DRYING STORAGE/TRANSPORT

STC-AL10

STC-AL8



*Designed to securely store and safely transport scope trays. Carts can be color coded to signify clean, patient ready scopes versus soiled scopes that need reprocessing. Each cart securely holds most popular brands of scope trays.*

STC-AL6



- Sturdy, all aluminum construction
- Secure scope tray holding system with individual trays held in place by zero-slide tray retainers
- Holds multiple brands of scope transport trays
- Available space on the cart top for additional supplies or equipment
- 3" (7.6 cm) single wheel stem caster set, full swivel – two with brake
- Durable scratch resistant hard baked powder coat finish
- Lightweight and simple to clean
- Cart is delivered fully assembled
- Latex free
- Scope trays not included

## CUSTOMIZE YOUR CART WITH A VARIETY OF SCOPE TRANSIT SYSTEM OPTIONS!

### **Breakaway Lock Bar:**

- Secure your scope trays with a breakaway lock bar
- Comes with a pack of 100 breakaway seals
- Enhances identification of trays allowing you to more easily keep track of which scope trays are clean or soiled
- Each breakaway seal has a unique identifying number for tracking which staff is responsible for tray reprocessing
- Helps prevent tampering by restricting tray access
- Comes in a heat sealed powder coat steel finish in over twenty color choices including an antimicrobial option



*Change the appearance, expand the functionality and broaden the usefulness of your Harloff cart by purchasing optional built-in add-on products.*

### **Color Coded Seals:**

- Breakaway seals come in a default yellow, but can be purchased in several color options
- Color code your seals: green for clean, red for soiled or any other color options to match your procedures
- Adds an additional identifying feature



### **Color Coded Cart Bodies:**

- Color code your cart body: green for clean, red for soiled or any other color options to match your procedures
- Color code to specific reprocessing areas
- Our durable heat sealed powder coat aluminum finish and open design is easy to clean and sterilize



## ENT/BRONCHOSCOPE

Item #	Drying
SCW2430DR	No
SCW2430DRDP	Yes
SCSSW2430DR (stainless)	No
SCSSW2430DRDP (stainless)	Yes
SCW2448DR	No
SCW2448DRDP	Yes
SCSSW2448DR (stainless)	No
SCSSW2448DRDP (stainless)	Yes
SCW24-LEDSTERI LED Sterilization upgrade	

## DILATOR DRYING CARTS

All models available in key lock, latch lock or electronic lock versions.

Item #	Dilator Height	Capacity
DSC24S (no drying)	28"	24
DSC24S-DP	28"	24
DSC24T (no drying)	39"	24
DSC24T-DP	39"	24
DSC36S (no drying)	28"	36
DSC36S-DP	28"	36
DSC36T (no drying)	39"	36
DSC36T-DP	39"	36

## SCOPE TRANSPORT AND STORAGE CARTS

**Available options:** a breakaway lock kit or stainless steel casters suitable for going through a cart wash.

Item #	Capacity/Type
STC-AL6	6 trays
STC-AL8	8 trays
STC-AL10	10 trays

SafeCap scope trays and lids are also available for purchase.

# GI CARTS/CABINETS INVENTORY LIST

## ENDOSCOPE DRYING CABINETS

All models available in key lock, latch lock, e-lock or even badge entry versions.

Item #	Capacity	Finish	Width	Channel Drying
SC8044DRDP	16 scopes	Powder Coat	44"	No
SCSS8044DRDP	16 scopes	Stainless	44"	No
SC8044DRDP-DSS3316	15 scopes	Powder Coat	44"	Yes
SCSS8044DRDP-DSS3316	15 scopes	Stainless	44"	Yes
SC8036DRDP	14 scopes	Powder Coat	36"	No
SCSS8036DRDP	14 scopes	Stainless	36"	No
SC8036DRDP-14-DSS3316	14 scopes	Powder Coat	36"	Yes
SCSS8036DRDP-14-DSS3316	14 scopes	Stainless	36"	Yes
SC8030DRDP	10 scopes	Powder Coat	30"	No
SCSS8030DRDP	10 scopes	Stainless	30"	No
SC8030DRDP-DSS2310	10 scopes	Powder Coat	30"	Yes
SCSS8030DRDP-DSS2310	10 scopes	Stainless	30"	Yes
SC80WTD RDP-10	10 scopes	Powder Coat	41"	No
SC80WTD RDP-10-DSS2305	10 scopes	Powder Coat	41"	Yes
SC8036TK-14	36" Wide Tambour Door Cabinet, 14 Scope Capacity			
SC8036TKDP-14	36" Wide Tambour Door Drying Cabinet, 14 Capacity			

White glove service is available upon request.

## SCOPE CABINET ACCESSORIES

Item #	Description
SC-LED-30	LED internal light w/ dimmer for 8030 models
SC-LED-36	LED internal light w/ dimmer for 8036 models
SC-LED-44	LED internal light w/ dimmer for 8044 models
SCFILTER1	Replacement HEPA Filter, 1-count
SCFILTER2	Replacement HEPA Filter, 2-pack
SCFILTER3	Replacement HEPA Filter, 3-pack

# 10 REASONS TO CHOOSE HARLOFF FOR SCOPE CABINETS

A Smart Choice to Meet & Exceed Current Joint Commission, SGNA, AORN and AAMI Guidelines.



1

**Industry Best Positive Pressure HEPA Filtered Drying System.** Designed to add Dri-Scope Aid® now or later with easy “Plug & Play” installation.

## Proudly Made in the USA

6



Harloff products are proudly **Designed, Engineered and Manufactured in the United States** at our Colorado Springs, CO facility.



## LED Lighting Option

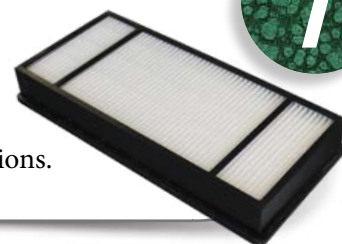
2

**Brighten your cabinet** and more easily inspect scopes with fully dimmable optional overhead LED lighting which triggers on/off when you open and close the door.

## Easy Access to HEPA Filters

7

Change HEPA filters **without opening the cabinet.** Save time and ensure no cycle interruptions.



## Disposable Connectors

**Save time and ensure compliance!** Use single-use connectors for all internal channels of the endoscope. Part of the Dri-Scope Aid® package.



3

## Keyed or Keyless Locks

**Options include** key locks, basic electronic push button locks, advanced keypads and proximity readers. View locking options online at [www.harloff.com/locking-options/](http://www.harloff.com/locking-options/)



8

## Hooks and Holders for Specialized Scopes

Major brands to include **Fuji, Olympus, Pentax, Karl Storz and others.**



4

## Scope Cabinet Finish Options

Choose Stainless Steel, Heat Sealed Powder Coat in High Gloss or Textured Low Gloss, or upgrade to an **antimicrobial finish.**

9

## 12 Year Warranty

**Our Manufacturer's Warranty is Unmatched** in the industry. We build our cabinets to last and we stand behind them.

5



## Superior Color Choices

**Over 20 Colors** to choose from. Cabinets have a heat sealed powder coat finish inside and out. View color options online at [www.harloff.com/finish-options/](http://www.harloff.com/finish-options/)

10



# VERSATILE, SECURE, MOBILE OR FIXED MEDICAL STORAGE SOLUTIONS

*These storage cabinets are designed around the most innovative modular tray system on the market and feature your choice of door style for security and ease of access.*

## MEDSTOR MAX CABINETS

### WHY CHOOSE MEDSTOR MAX FOR YOUR STORAGE SOLUTIONS?

- Offers up to 30% more tray and basket storage capacity when compared with leading competitors products.
- Adjustable dividers have a unique clip-in design to stay in place when heavily loaded.
- Unique design of side panels, combined with pull-out stoppers, allows trays to be viewed at an angle without falling out of the cart.
- Available in multiple locking options on glass door models – key lock, E-lock & keyless entry with audit trail.



Engineered and  
Manufactured in the U.S.



MSSM82-00GK



# MEDSTOR<sup>MAX</sup>

## MEDICAL STORAGE

MSPM82-00GK (2-WIDE)



### MedStor Max glass door storage cabinets come with the following standard features:

- Unmatched quality of construction — built to last using professional-grade design and manufacturing for medical-grade applications
- Largest selection of locking options in the industry including badge entry and WiFi-capable locks
- Improved, better refined aesthetics featuring sleek new door handles and hinged doors
- Stacks flush with walls or other

cabinets — we don't use easily misplaced removable handles or bulky exterior hardware

- Doors can swing open up to 270 degrees, which is great for leaving cabinets open during busy days.
- Features a true 24" interior cabinet depth able to store boxes two feet deep
- Customize your cabinet with any combo of trays, baskets, shelves or accessory packages
- Interior side panels offer multiple insertion points in every column creating

MSPM83-00TK (3-WIDE)



*Tambour door models like the one above use a handled door front that rolls directly into the cabinet roof. They are useful for situations where the door needs to remain open all day long, but they are limited to a key lock and cannot incorporate LED lighting.*

a system of organizational possibilities

- Modular trays can be pulled out at an angle and "clip-on" locking safety features help minimize the risk of trays falling out
- Optional dimming LED lights toggle on/off when the door is open, ideal for use in surgical areas for better procedural vision
- Industry best 5" quiet rolling Tente® casters for superior mobility - 1 steering and 1 braking caster
- Cabinet is delivered fully assembled - **accessories not included**

MSPM81-00TK (1-WIDE)



*View medical storage  
cabinet locking  
options on page 90*

# **MEDSTOR<sup>MAX</sup>**

## **MEDICAL STORAGE**

MSPM84-00GK (4-WIDE)



**Build your MedStor Max storage cabinet to meet your specifications by choosing from the following options:**

### **NUMBER OF COLUMNS**

Choose from Single, Double, Triple or Quad column options. A Single column Slimline version is also available.

### **FINISH/MATERIAL TYPE**

Choose from Heat Sealed Powder Coat Steel or Stainless Steel finishes.

### **CABINET HEIGHT**

Choose from Full Height, 3/4 Height or 1/2 Height options.

### **DOOR TYPE**

Choose from standard glass doors, tambour doors, solid metal doors for extra security or no door options.

### **FIXED OR MOBILE**

Choose from our standard mobile base with wheels, a fixed base with levelers or a shortened base with levelers for tight spaces.

### **LOCKING OPTIONS**

Choose from our standard key lock, an electronic lock, a keypad lock with or without a proximity reader, a WI-FI-capable lock or a basic latch lock.

### **SIDE PANEL AND COLUMN OPTIONS**

Customize your interior setup with a split column or any number of panel configurations to accommodate your chosen accessories.

### **ACCESSORIES**

We have a wide variety of trays, baskets, shelves, dividers, labels and catheter slide shelves to perfectly outfit your cabinet.



# MEDSTOR<sup>MAX</sup> MEDICAL STORAGE

STAINLESS  
STEEL

MSSM82-20GK

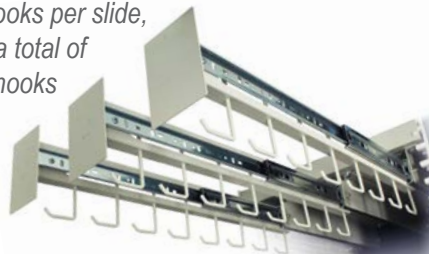
ENHANCE ANY CABINET FOR CATHETER  
STORAGE BY ADDING EITHER ONE OR TWO  
COLUMN CATHETER SLIDE SHELVES

MSPM82-00GEK



**MSCATH7-8** Catheter slide shelf for use in double column MedStorMax, with 7 cath slides, 8 hooks per slide, for a total of 56 hooks

**MSCATH3-8** Catheter slide shelf for use in single column MedStorMax, with 3 cath slides, 8 hooks per slide, for a total of 24 hooks







**THREE HEIGHTS...**

MSPM81-00TK

3/4  
HEIGHT

FULL  
HEIGHT

MSPM62-00GK

MSPM84-00GK

**MEDSTOR<sup>MAX</sup>**  
**MEDICAL STORAGE**

MSPM42-00GK



1/2  
HEIGHT

**AND FOUR WIDTHS TO  
CHOOSE FROM: SINGLE,  
DOUBLE, TRIPLE  
OR QUAD  
COLUMN**



MSPM63-00GK



MSPM62-00TK



MSPM81-00GK

# MEDICAL STORAGE ORDER SHEET

**\*Cabinets can be equipped with any lock type, as well as any other storage cabinet options.**

## STORAGE CABINET MODELS BY SKU\*

Item #	Description
MSPM42-00GK	1/2 Height, Double Column, Glass Doors
MSPM42-00TK	1/2 Height, Double Column, Tambour Door
MSPM62-00GK	3/4 Height, Double Column, Glass Doors
MSPM62-00TK	3/4 Height, Double Column, Tambour Door
MSPM63-00GK	3/4 Height, Triple Column, Glass Doors
MSPM63-00TK	3/4 Height, Triple Column, Tambour Door
MSPM81-00GK	Single Column, Glass Doors
MSPM81-00TK	Single Column, Tambour Door
MSPM80-00GK	Slimline, Single Column, Glass Doors
MSPM82-00GK	Double Column, Glass Doors
MSPM82-00TK	Double Column, Tambour Door
MSSM82-00GE	Stainless, Double Column, Glass Doors
MSSM82-20GK	Stainless, Double Wide Open Column, Glass Doors
MSPM83-00GK	Triple Column, Glass Doors
MSPM83-00TK	Triple Column, Tambour Door
MSPM83-R0GK	Triple Column, Double Wide Open Left Column, Glass Doors
MSPM83-L0GEK	Triple Column, Double Wide Open Right Column, Glass Doors
MSPM83-R0TK-SPLITA	Triple Column, Double Wide Split-A Left Column, Tambour Door
MSPM83-ROTK-SPLITB	Triple Column, Double Wide Split-B Left Column, Tambour Door
MSSM83-00GK	Stainless, Triple Column, Glass Doors
MSPM84-00GE	Quad Column, Glass Doors
MSPM84-00TK	Quad Column, Tambour Door
MSPM84-20GK	Quad Column, Double Wide Open Columns, Glass Doors
MSPM84-00GEK	Quad Column, Glass Doors
MSPM84-R0GEK	Quad Column, Double Wide Open Left Column, Glass Doors

## STORAGE CABINET OPTIONS

### MATERIALS

**MSP:** Steel  
**MSS:** Stainless

### CAB TYPE

**M:** Std Wheels  
**B:** Base with Levelers  
**L:** Short Base with Levelers

### HEIGHT

**8:** Full Height  
**6:** 3/4 Height  
**4:** 1/2 Height

### COLUMNS

**1:** Single  
**0:** Single Slimline  
**2:** Double  
**3:** Triple  
**4:** Quad

### DOOR

**TK:** Tambour with Key Lock  
**G:** Glass  
**S:** Solid, no glass  
**X:** Open, no door

### LOCK TYPE

**K:** Key Lock  
**E:** E-Lock  
**EK:** Keypad E-Lock  
**EP:** Keypad E-Lock with Prox Reader  
**WEK:** Wireless Keypad E-Lock  
**WEP:** Wireless Keypad E-Lock with Prox Reader

### SIDE PANELS

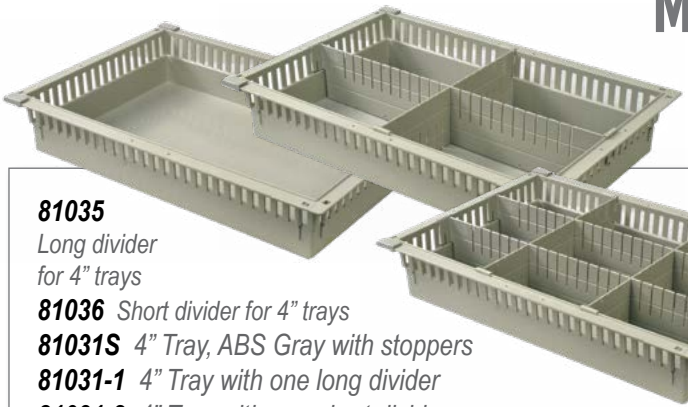
**00:** all H+H on columns, all columns fit H+H trays  
**L0:** left side column(s) with H+H Panels for trays, Open Double Column Right w/H+H panels  
**R0:** Right side column(s) with H+H Panels for trays, Open Double column Left w/H+H panels  
**L2:** left side column(s) with H+H panels for trays, Open Double Column Right with steel sides, no H+H,  
**R2:** Right side column(s) with H+H panels for trays, Open Double column Left with steel sides, no H+H  
**20:** Open Double column(s), H+H panels, Double/quad column only  
**12:** Single Column, steel sides, no H+H  
**22:** Open Double Column with steel sides, no H+H, Dual/Quad column only  
**32:** Open Triple Column with Steel sides, no H+H

### OPTIONAL MODIFIER

**SPLITA:** Open double column split, Double column above, open column below, with H+H panels on all column sides  
**SPLITB:** Open double column split, double column below, open column above, with H+H panels on all column sides  
**2SPLITA:** Quad Column only with two open double columns, both double columns split, Double column above, open column below, with H+H panels on all column sides  
**2SPLITB:** Quad Column only with two open double columns, both open double columns split, double column below, open column above, w/H+H panels on all column sides



# MEDICAL STORAGE ACCESSORIES



## **81035**

Long divider  
for 4" trays

**81036** Short divider for 4" trays

**81031S** 4" Tray, ABS Gray with stoppers

**81031-1** 4" Tray with one long divider

**81031-2** 4" Tray with one short divider

**81031-3** 4" Tray with 2 long dividers

**81031-4** 4" Tray with 2 short dividers

**81031-5** 4" Tray with 1 long, 1 short divider

**81031-6** 4" Tray with 2 long, 1 short divider

**81031-7** 4" Tray with 1 long, 3 short dividers

**81031-8** 4" Tray with 2 long, 2 short dividers

## 4 INCH MODULAR TRAY AND DIVIDERS



## **81033**

Long divider  
for 2" trays

**81034** Short divider for 2" trays

**81030S** 2" Tray, ABS Gray with stoppers

**81030-1** 2" Tray with one long divider

**81030-2** 2" Tray with one short divider

**81030-3** 2" Tray with 2 long dividers

**81030-4** 2" Tray with 2 short dividers

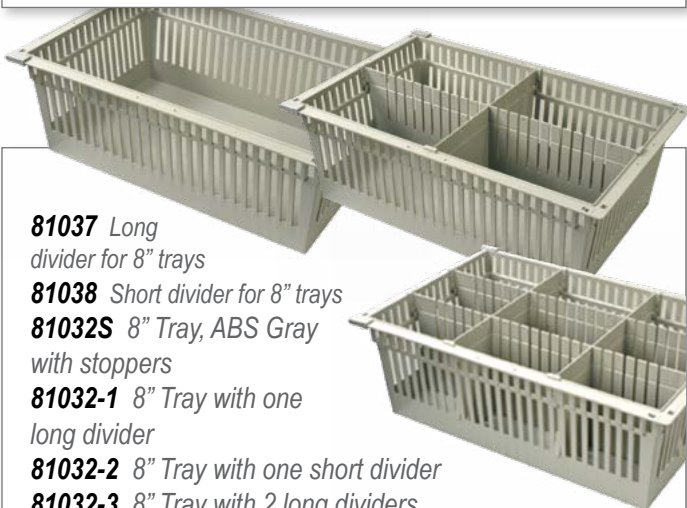
**81030-5** 2" Tray with 1 long, 1 short divider

**81030-6** 2" Tray with 2 long, 1 short divider

**81030-7** 2" Tray with 1 long, 3 short dividers

**81030-8** 2" Tray with 2 long, 2 short dividers

## 2 INCH MODULAR TRAY AND DIVIDERS



**81037** Long  
divider for 8" trays

**81038** Short divider for 8" trays

**81032S** 8" Tray, ABS Gray  
with stoppers

**81032-1** 8" Tray with one  
long divider

**81032-2** 8" Tray with one short divider

**81032-3** 8" Tray with 2 long dividers

**81032-4** 8" Tray with 2 short dividers

**81032-5** 8" Tray with 1 long, 1 short divider

**81032-6** 8" Tray with 2 long, 1 short divider

**81032-7** 8" Tray with 1 long, 3 short dividers

**81032-8** 8" Tray with 2 long, 2 short dividers

## 8 INCH MODULAR TRAY AND DIVIDERS

**81073** Short divider for 3" wire baskets

**81074** Long divider for 3" wire baskets

**81070** 3" wired basket

**81070-1** 3" wired  
basket with  
1 long divider

**81070-2** 3" wired basket  
with 1 short divider

**81070-3** 3" wired  
basket with 1 long,  
1 short dividers

**81075** Short divider  
for 5" wire baskets

**81076** Long divider for 5" wire baskets

**81071** 5" wired basket

**81071-1** 5" wired basket with 1 long divider

**81071-2** 5" wired basket with 1 short divider

**81071-3** 5" wired basket with 1 long, 1 short dividers

**81077** Short divider for 8" wire baskets

**81078** Long divider for 8" wire baskets

**81072** 8" wired basket

**81072-1** 8" wired basket with 1 long divider

**81072-2** 8" wired basket with 1 short divider

**81072-3** 8" wired basket with 1 long, 1 short dividers

## 3, 5 AND 8 INCH WIRE BASKETS

**ASK ABOUT OUR ACCESSORY PACKAGES  
WHICH INCLUDE MULTIPLE COMBINATIONS  
OF BASKETS, TRAYS, SHELVES AND CATH  
SHELVES TO SUIT ANY ORGANIZATION NEED**

# MEDICAL STORAGE ACCESSORIES

**MS-SH-24** Shelf for single column MedStor Max



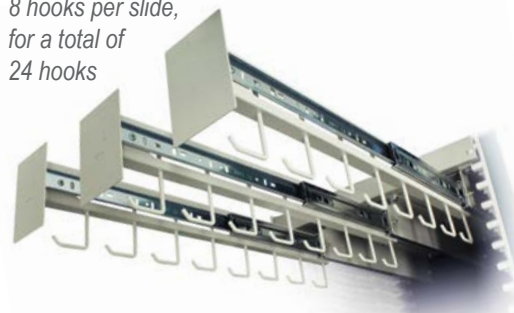
**MS-SH1-24** Shelf for single column MedStor Max with 2 adjustable dividers



**MS-SH2-24** Shelf for full double column MedStor Max with 5 adjustable dividers



**MSCATH3-8** Catheter slide shelf for use in single column MedStor Max, with 3 cath slides, 8 hooks per slide, for a total of 24 hooks



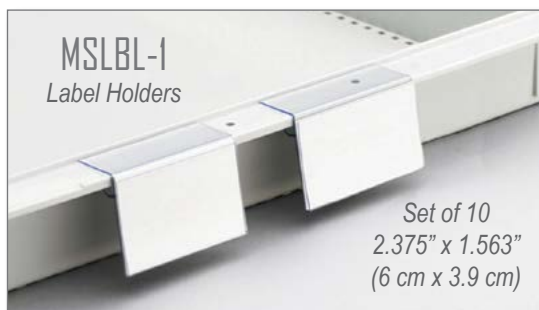
**MSCATH7-8** Catheter slide shelf for use in double column MedStor Max, with 7 cath slides, 8 hooks per slide, for a total of 56 hooks



**MS-DRW3K-1COL** (1 column, 1 drawer)  
**MS-2DRW3K-2COL** (2 column, 2 drawers)  
**MS-DRW3K-2COL** (2 column, 1 drawer)  
 Internal Drawer, Comes with Key Lock or E-Lock



**MSLBL-1**  
 Label Holders



Set of 10  
 2.375" x 1.563"  
 (6 cm x 3.9 cm)

**LED-MS8120** (1 column)  
**LED-MS8140** (2 column)  
**LED-MS8160** (3 column)  
**LED-MS8180** (4 column)  
 LED Light Kit, Door Sensor and Dimmer for hinged doors



**MS-SKRT-SGL** (1 column)  
**MS-SKRT-DBL** (2 column)  
**MS-SKRT-TPL** (3 column)  
**MS-SKRT-QUA** (4 column)  
 Front Kick Plate, skirt affixes to any MedStor Max with casters



**MS-CATHDOUBLEDRAW**  
 Catheter slide drawer for use in double column MedStor Max, with five partitions



**MS-CATHSINGLEDRAW**  
 Catheter slide drawer for use in single column MedStor Max, with two partitions



**MSCATH-LBL**  
 Catheter Slide Label Envelope (pack of 10)



**MSLBL-4**  
 Label holder for basket (sold individually)



## FIXED SHELVES

*Remove your plastic cabinet side panels and replace them with any amount of permanent, fixed shelves.*



## SPLIT COLUMN

*Double column cabinets can be either two single columns or one double wide column, however a split column cabinet provides the best of both worlds. The SPLITA version has two single columns above with a double wide column below, while the SPLITB is the inverse of that. These configurations are ideal for holding catheters while maximizing storage space.*



## MEDICAL STORAGE OPTIONS

### LOUVERED PANELS

*This accessory replaces our side panels with louver panels that hold Akro-Mils® or similar style plastic bins. Panels are affixed to the rear and provide up to 180 insertion points. Designed for full size, double width column MedStorMax cabinets.*



### SLOPE TOPS

*This top cover accessory adds a sloped top to any one, two, three or four column MedStor Max cabinet. Slope top cabinets provide attractive aesthetics and are easier to clean within medical facilities.*



**CUSTOM OR UNIQUE PROJECT? NO PROBLEM.  
LET US BUILD THE PERFECT SOLUTION FOR YOU!**

### BASE ALTERNATIVES

*MedStor Max cabinets come standard with 5" quiet rolling Tente® casters to keep your storage mobile. But for those that need stationary storage cabinets, we offer two options: a standard height base with legs or a short base for rooms that have lower clearance. Each version includes levelers to help cabinets stay level.*

#### Stationary Base with Levelers



#### Zero Base with Levelers



# 10 REASONS TO CHOOSE HARLOFF FOR MEDICAL STORAGE

## 1 Premium Grade Quality

Our medical grade cabinets are proudly **made in the USA** using top manufacturing techniques. We stand by our work with an industry leading 12-year manufacturer's warranty.

1



## 6 Increased 270° Door Swing

Doors can swing up to 270 degrees, great for leaving cabinets open during busy days. Optional magnets help keep open doors flush to the cabinet body.

6



## 2 Limitless Possible Combos

**Customize your cabinet** with any configuration of trays, baskets, shelves or accessories/packages. Interior side panels within each column create a system of multiple organization possibilities.

2



## 7 Integrated Side Handles

We don't use easily misplaced removable handles or bulky exterior hardware. **MedStor Max handles are built into the cabinet body** so they can stack flush with walls or other cabinets.

7

## 3 Highest Capacity Storage

Our cabinets feature a true 24" interior cabinet depth able to store boxes two feet deep. Offers **30% more tray or basket storage capacity** when compared with leading competitors products, using any 2", 4" and 8" modular trays or 3", 5" and 8" wired baskets.

3

## 8 Your Choice of Lock Type

We have the **largest selection of locking options** in the industry including badge entry and WiFi-capable locks. View the options online at <https://www.harloff.com/locking-options/>

8

## 4 Recessed LED Lighting Option

**Optional dimming LED lights** toggle on/off when the door is open, ideal for use in surgical areas for better procedural visions.

4



## 9 Modular Trays that Safely Extend

Trays can be pulled out at an angle, and "clip-on" locking safety features help minimize the risk of falling trays.

9



## 5 Multiple Door Options

Select our **standard glass doors** option or choose a tambour door, solid doors, sliding doors or even no doors at all!

5

## 10 Stainless Steel or Color

All cabinet sizes **available in stainless steel** or choose from over twenty color options.

10



STAINLESS  
STEEL



## STEEL OR ALUMINUM?

*The A-Series is our line of ultra light aluminum carts with optimal curb appeal. Enjoy top-quality innovative storage and organization with a sleek, modern appearance. The A-Series comes with curved drawer pulls, self-closing drawer slides and our expanded lock options for the perfect balance of form and function.*

*The M-Series is our line of durable steel carts designed and built to meet the needs of today's healthcare market. Ergonomic side handles, comfort drawer pulls, expanded lock options and a standard antimicrobial top help make things easier for your facility.*



**Engineered and  
Manufactured in the U.S.**

# THE CHOICE IS YOURS WITH A-SERIES AND M-SERIES CARTS!

CHOOSE YOUR HEIGHT, WIDTH AND DRAWER CONFIGURATION  
CHOOSE YOUR LOCK - YOUR COLOR - YOUR ACCESSORIES

### A-SERIES FEATURES:

- Lightweight aluminum fully welded uni-body construction
- Curved drawer pulls, durable and elegant
- Heat-sealed durable scratch resistant powder coat finish, inside and out
- Industry only fully curved protective bumper guards your cart and walls from damage
- Self-closing, steel ball bearing, full extension drawer slides for easy access and smooth feel
- Ergonomic side push handles can be mounted on either side
- Antimicrobial plastic top, easily removable and replaceable
- Fully customizable drawer configurations at no extra charge
- Industry best 5" quiet rolling Tente® casters - 1 steering caster and 2 braking casters
- Multiple alternative storage options for items that won't fit inside a traditional drawer
- Cart is delivered fully assembled



MPA3030E06

### M-SERIES FEATURES:

- Choice of lock options
- Full extension drawers slides for easy access
- Industry only fully curved protective bumper
- Fully customizable drawer configurations
- Durable scratch resistant hard baked powder coat finish
- Ergonomic side push handles can be mounted on either side
- Industry best 5" quiet rolling Tente® casters - 1 steering caster & 2 braking casters
- Body has pre-threaded accessory mounting holes
- Antimicrobial, removable plastic top

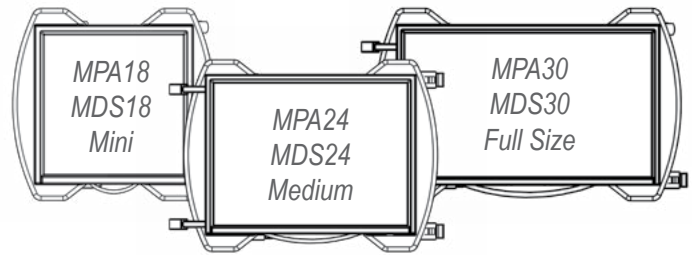


MDS3030B16



# M-SERIES/A-SERIES CARTS

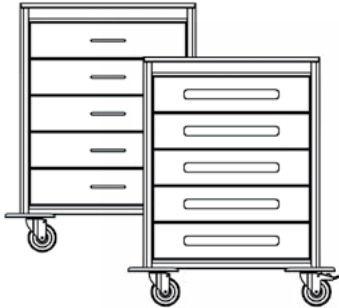
## THREE WIDTHS TO CHOOSE FROM:



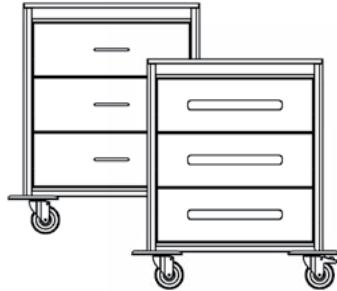
## CHOOSE YOUR DRAWER CONFIGURATION:

1. Choose a cart size (X-Short, Short, Medium and Tall)
2. Select any combination of 3", 6", 9" or 12" drawers that fit within your cart's configurable drawer space.

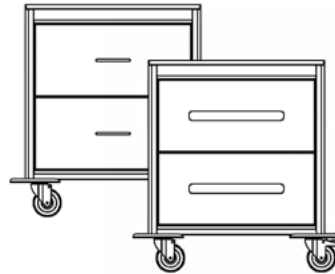
5 drawers x 6" height = 30"



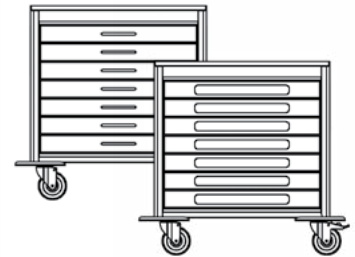
3 drawers x 9" height = 27"



2 drawers x 12" height = 24"



7 drawers x 3" height = 21"



## CHOOSE YOUR LOCK:

- B - Breakaway Lock • K - Key-Lock • E - Basic Electronic Pushbutton Lock • EKC - Electronic Lock w/Keypad
  - ELP - Electronic Lock w/Keypad and Proximity Reader • WKC - Wireless Electronic Lock w/Keypad • WELP - Wireless Electronic Lock w/Keypad and Proximity Reader
- View locking options on page 88 or view them online: <https://www.harloff.com/locking-options/>

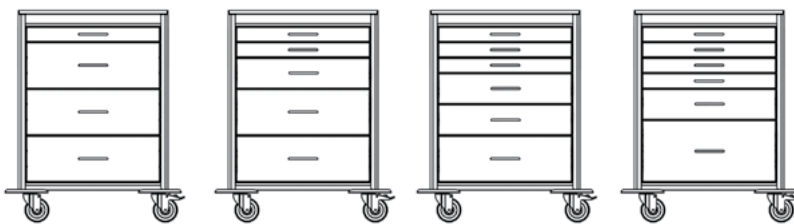
## CHOOSE YOUR COLOR(S):

Available in over 20 color options. An anti-microbial finish is available in Lemon Drop Yellow. View all color options on page 91 or view them online: <https://www.harloff.com/finish-options/>

## CHOOSE YOUR ACCESSORIES:

A full line of drawer dividers and exterior accessories are available for all cart sizes. View accessory options on pages 61-68 or view them online: <https://www.harloff.com/accessories/>

## COMMON DRAWER CONFIGURATIONS:



MDS3030K04

1-3, 3-9

MDS3030K05

2-3, 1-6  
2-9

MDS3030K06

3-3, 2-6  
1-9

MDS3030K16

4-3, 1-6  
1-12



MDS3024K04

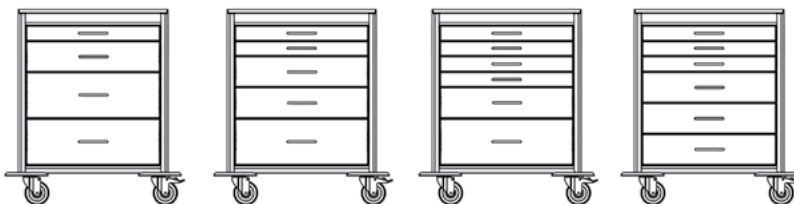
1-3, 2-6  
1-9

MDS3024K05

3-3, 1-6  
1-9

MDS3024K15

2-3, 3-6



MDS3027K04

1-3, 1-6  
2-9

MDS3027K05

2-3, 2-6  
1-9

MDS3027K06

4-3, 1-6  
1-9

MDS3027K16

3-3, 3-6



MDS3021K04

1-3, 3-6

MDS3021K14

2-3, 1-6  
1-9

MDS3021K05

3-3, 2-6

# MPA30 CARTS



## SHORT A-SERIES

**Configurable Drawer Space: 24"**

**37.25" H x 36.75" W x 22" D**

36.125" Height of  
Work Surface

**X-SHORT A-SERIES**  
**Configurable Drawer Space: 21"**

**34" H x 36.75" W x 22" D**

32.875" Height of  
Work Surface



MPA3021K04



MPA3024E05

**MEDIUM A-SERIES**  
**Configurable Drawer Space: 27"**

**40.5" H x 36.75" W x 22" D**

39.375" Height of  
Work Surface



MPA3027B06

**TALL A-SERIES**  
**Configurable Drawer Space: 30"**  
**43.75" H x 36.75" W x 22" D**  
42.625" Height of  
Work Surface



MPA3030EKC06

# MDS30 CARTS



## SHORT M-SERIES

**Configurable Drawer Space: 24"**

**37.25" H x 36.75" W x 22" D**

36.125" Height of  
Work Surface

**X-SHORT M-SERIES**  
**Configurable Drawer Space: 21"**

**34" H x 36.75" W x 22" D**

32.875" Height of  
Work Surface



MDS3021E05



MDS3024E05

**MEDIUM M-SERIES**  
**Configurable Drawer Space: 27"**

**40.5" H x 36.75" W x 22" D**

39.375" Height of  
Work Surface



MDS3027ELP06

**TALL M-SERIES**  
**Configurable Drawer Space: 30"**  
**43.75" H x 36.75" W x 22" D**  
42.625" Height of  
Work Surface



MDS3030B06

# MPA24 AND MPA18 CARTS

## MPA2430EKC16

TALL

30" of Configurable  
Drawer Space  
43.75" H x 30" W x 22" D,  
42.625" Height of  
Work Surface



## MPA2427E05

MEDIUM

27" of Configurable  
Drawer Space  
40.5" H x 30" W x 22" D  
39.375" Height of  
Work Surface



View small  
cart locking  
options on  
page 88



## MPA2421K14

X-SHORT

Configurable Drawer  
Space: 21",  
34" H x 30" W x 22" D  
32.875" Height of  
Work Surface



SHORT

Configurable Drawer  
Space: 24", 37.25" H x 30" W x 22" D  
36.125" Height of Work Surface

## MPA2424B05

## M3PA1830K06

TALL

30" of Configurable  
Drawer Space  
43.75" H x 24.75" W x 22" D  
42.625" Height of  
Work Surface



Find  
accessories  
for small carts  
on pages  
61-68

## MPA1827E05

MEDIUM

27" of Configurable  
Drawer Space  
40.5" H x 24.75" W x 22" D  
39.375" Height of  
Work Surface



## MPA1821EKC14

X-SHORT

Configurable  
Drawer  
Space: 21",  
34" H x 24.75"  
W x 22" D  
32.875"  
Height of  
Work Surface



SHORT

Configurable  
Drawer Space: 24",  
37.25" H x 24.75" W x 22" D  
36.125" Height of Work Surface

## MPA1824L03



## MDS2421K14

### X-SHORT

Configurable

Drawer Space: 21",  
34" H x 30" W x 22" D

32.875" Height of  
Work Surface



### SHORT

Configurable

Drawer Space: 24",  
37.25" H x 30" W x 22" D

36.125" Height of Work Surface

## MDS2424E05

# MDS24 AND MDS18 CARTS

## MDS2427EKC05

### MEDIUM

27" of Configurable  
Drawer Space  
40.5" H x 30" W x 22" D

39.375" Height of  
Work Surface



## MDS2430KC5-18EH

### TALL

30" of Configurable  
Drawer Space  
43.75" H x 30" W x 22" D  
42.625" Height of Work Surface



Cart is  
shown with an  
equipment holder  
upgrade!

## MDS1821E14

### X-SHORT

Configurable

Drawer  
Space: 21",  
34" H x 24.75"  
W x 22" D

32.875" Height  
of Work Surface



### SHORT

Configurable

Drawer Space: 24",  
37.25" H x 24.75" W x 22" D

36.125" Height of Work Surface

## M3DS1824K03

## MDS1827WKC05

### MEDIUM

27" of Configurable  
Drawer Space  
40.5" H x 24.75" W x  
22" D, 39.375" Height  
of Work Surface



## MDS1830EKC06

### TALL

30" of Configurable  
Drawer Space  
43.75" H x 24.75" W x 22" D  
42.625" Height of  
Work Surface



# M-SERIES/A-SERIES OPTIONS

## EQUIPMENT HOLDERS

Replace 9", 12" or 18" of vertical drawer space at the top or bottom of your M-Series or A-Series cart with an open or closed door equipment holder, perfect for storing large medical equipment. Equipment holders feature a 17" deep holding area that replaces standard drawer areas and comes with a 2" hole in the rear for cords and cables to pass through.

**MDS3030KC4+MD30-DRW9-EH**

**MDS2430KC4+MD24-DRW18-EHDR**



## DRAWER OPTIONS

For carts with storage areas, you have several options available to you for these enclosures including flip up doors, locking double doors and adjustable shelves. Don't see what you want? Harloff can create custom drawer designs to match unique requirements.

**MDS3030B16+MD30-FDR12**



## BUMPERS AND CASTERS

Standard M-Series and A-Series carts come equipped with fully curved "pontoon-style" protective bumper guards and premium 5" quiet rolling Tente® casters, but other options are available if you have (for example) height or width space limitations or other considerations. We offer two non-custom bumper options (smaller gray bumpers or no bumpers) and two caster options (3" plate casters or 3" stem casters).

**MDS1824E04G3**

(gray bumpers, 3" plate casters)

**MDS2421E05N5**

(no bumpers, 5" plate casters)

**M3DS1830K05**

(no bumpers, 3" stem casters)



## CUSTOM OPTIONS

M-Series/A-Series carts are highly adaptable, customizable and can be used for a variety of medical purposes. Let us help build the perfect custom cart for you!

**MPA3030EC5**

Includes an open tray holder option MD30-DRW15-EH-HH





Easily add the look of wood to any M-Series or A-Series cart by adding vinyl-coated aluminum drawer fronts. This combines the aesthetics of furniture with the ability to customize and the long-term functionality of a Harloff metal cart.

## WOOD VINYL DRAWER FRONTS

### MDS1830KC7-CM

This mini-width M-Series cart features seven drawers with Cherry Mahogany wood vinyl drawer fronts.

### MDS3030EC6-AN

Give your M-Series cart a home-like feel with American Natural drawer fronts.

### MPA3024EC5-AN



Wood vinyl color options include American Natural, Cherry Mahogany and several other types of wood grain colors.



## WOOD GRAIN FINISH CARTS

### WV3256K-CM

We offer full wood grain finish options for several cart styles including crash carts (WV6400B) anesthesia carts (WV3256K), and general treatment carts (WV6200, WV6350, WV6450, WV6520, WV6400SC). Each

"medical furniture" cart features the same full extension drawer slides and 5" premium ball-bearing casters of our standard carts, but comes with a durable vinyl coated aluminum body, a pull out shelf and gray bumpers. These carts are ideal for facilities supporting Culture Change initiatives by giving carts a home-like feel.

### WV6200-CM

Similar to the MDS3030K02-21DR, this wood vinyl coated aluminum cart has a 21" tall bottom storage area.



### WV6400B-CM



# 10 REASONS TO CHOOSE HARLOFF ACUTE CARE CARTS

## 1 TENTE, World Leader in Casters

Tente is renowned for having the **Highest Quality Casters** in the industry, providing the best longevity and durability.



## 6 Proudly Made in the USA



Harloff products are proudly **Designed, Engineered and Manufactured in the United States** at our Colorado Springs, CO facility.

## 2 Antimicrobial Silver Infused Plastic Tops

This high touch area employs silver technology to enhance **Infection Control**. The replaceable top is easily removed for thorough cleaning.



## 7 Pair of Ergonomic Push Handles Included

Ergonomic **side handles** are **included** on every M-Series and A-Series model (excluding narrow carts) and can be mounted on either side of the cart.

## 3 Radius Corners and Flat Sides

Smooth surfaces assist **Infection Control** compliance by providing an easy surface to clean and sanitize. Difficult to clean corner channels are not used on Harloff carts.



## 8 Drawer Customizations/Options

**"One Size Does Not Fit All!"** Harloff will design and build your cart to meet your needs. There are **No Additional Charges** for changes to drawer configuration and accessory placement.

## 4 Heat Sealed Powder Coat Painted Inside and Out

We use a multi-step process that provides a hard, scratch resistant surface for extreme durability. **Harloff's Non Porous Surface** is easy to sanitize and enhances infection control protocols.



## 9 Pontoon Bumpers

Our **Large Bumpers** **Provide Protection** for the back, front and sides of the cart and protect facility walls from damage. Other bumpers are also available.



## 5 12 Year Warranty

Our **Manufacturer's Warranty** is **Unmatched** in the industry. We build our carts to last and stand behind our work.



## 10 Color Options

With a selection of over **20 Colors** to choose from, you can always get just the color you need. You can even mix and match the cart body and drawers with two separate colors.





# EMERGENCY CRASH CARTS

*Emergency carts, code carts and crash carts are designed for storing supplies needed in emergency situations. Harloff crash carts feature quality construction, multiple configurations and a 12 year warranty on manufactured parts.*

*Harloff is the market leader in storage solutions designed for emergency departments, ICU coronary care and urgent care centers. Our crash carts are used in world-class hospitals and medical facilities around the world.*



Engineered and  
Manufactured in the U.S.

## QUICK-RESPONSE CARTS DESIGNED FOR EMERGENCY ENVIRONMENTS

*Harloff provides emergency carts to meet your unique needs. In addition to the many standard configurations shown, we are well known for our custom capabilities. Whether it's changing carts to custom locks, replacing drawer configurations, creating specialized accessories for unique facility requirements or designing and building new specially-sized carts, just ask our Sales Team for a quote to meet your specific needs.*

MDS3030B06+MD30-EMG3



*Includes  
the MD30-EMG3  
comprehensive Super  
Stat accessory  
package!*

# EMERGENCY CRASH CARTS

## MDS3030B06+MD30-EMG3

Replaces  
the 6411

This top-of-the-line Harloff emergency cart has plenty of drawer space for supplies, the mobility to arrive quickly at any emergency and the accessories required to hold necessary medical equipment. Includes Harloff's MDS30-EMG3 Super Stat Emergency Package, a comprehensive array of crash cart accessories to keep your facility prepared for any contingency, plus a breakaway bar with 100 seals.

Equip your cart with an accessory package for the ideal emergency crash cart setup, or select from other options! M-Series and A-Series offer you choices.



## MD30-EMG3 ACCESSORY PACKAGE

For MDS30/MPA30 carts, this Super Stat Package includes:

- Cardiac board and brackets (MD-CARDBRD)
- Oxygen tank holder (O2HLDR)
- IV pole (MD-IV2)
- (2) Utility hooks (UHOOKS2)
- Large Utility Basket (BASKETDM)
- Chart Holder (CHARTHLDRDM)
- Toprail, matching cart color (MD30-TOPRAIL)
- Defibrillator Shelf (MD-DEFIB)
- Locking Sharps Container (5qt) and Glove Box Holder (LKSHRPHOLD5Q-GLV)
- Suction shelf (SUCTIONSHLF)
- (1) Standard 3" Drawer Dividers (MD30-DIV3-S)
- (1) Standard 6" Drawer Dividers (MD30-DIV6-S)
- (1) Standard 3" Drawer Tray Dividers (MD30-TRAYDIV3-S)



## MD30-EMG1 ACCESSORY PACKAGE

For MDS30/MPA30 carts, this Standard Package includes:

- IV pole (MD-IV2)
- Cardiac board and brackets (MD-CARDBRD)
- Oxygen tank holder (O2HLDR)
- Drop shelf (MD-DRPSHLF)
- (2) Utility hooks (UHOOKS2)
- (2 Sets) Standard 3" Drawer Dividers (MD30-DIV3-S)



## MDS3030B06+MD30-EMG1

Replaces  
the 6401

This M-Series tall emergency crash cart includes Harloff's MD30-EMG1 Emergency Package which features the most common requirements for medical crash carts. This includes an IV pole, oxygen tank holder, cardiac board, drop shelf, utility hooks and drawer dividers. Other features include industry best Tente® casters for quick movement, top quality drawer slides which provide supply access and a breakaway locking bar with 100 seals to ensure each cart is stocked and ready. Harloff crash carts are known and depended upon by thousands of medical professionals.



QuickShip

available in Red color



Replaces  
the 6301

## MDS3024B14+MD30-EMG1

One of the best medical emergency carts at a great crash cart price, this reliable, economical cart includes the MD30-EMG1 package with common accessories needed for most medical crash carts. Also includes Tente® casters, top quality drawer slides and a breakaway bar with 100 seals.



available in Red color

# EMERGENCY CRASH CARTS

Replaces the  
AL809B6-EMG

## MPA3027B06+MD30-EMG1

This lightweight aluminum cart comes with Harloff's MD30-EMG1 emergency accessory package which includes an oxygen tank holder, aluminum drop shelf, two utility hooks, two sets of standard 3" drawer dividers, a cardiac board with brackets and an adjustable IV pole. This cart comes with pre-threaded holes drilled into the cart so that each accessory can easily be installed with just a screwdriver upon delivery.

This lightweight break-away crash cart also features 5" ball-bearing Tente casters, a white antimicrobial plastic top, new full extension self-closing drawer slides, ergonomic side push handles and a fully-curved protective bumper. Help to ensure that your emergency care staff have all the supplies they need to save lives!



## MPA3030B06

Constructed from lightweight aluminum, this easy to maneuver crash cart uses self-closing, steel ball bearing, full extension drawer slides. Also features sleek, longer drawer pulls and premium 5" Tente® casters.



## MDS3024B05+MD30-EMG1

This short crash cart comes with the MD30-EMG1 emergency accessory package which includes an O2 holder, IV pole, cardiac board, drop shelf, utility hooks and drawer dividers. Comes with three 3" drawers, one 6" drawer and one 9" drawer.



Replaces the 6331

Replaces  
the 6416B

## MDS3030B06

Comes with a heat sealed powder coat steel breakaway lock bar with 100 seals. Also features 30" of vertical drawer space, an antimicrobial plastic top, protective bumpers, ergonomic side handles and more.



available in Red color

# EMERGENCY CRASH CARTS

MDS3030B16+MD30-FDR12

Similar to the 6403

MDS3030B16

Replaces the 6400

Used in hospitals nationwide, this crash cart is ideal for emergency preparedness. Features include premium Tente® casters, full extension drawer slides, protective bumpers, an antimicrobial plastic top, ergonomic side handles and a breakaway locking bar with 100 seals.



Find accessories for small carts on pages 61-68

MDS3024B14

Replaces the 6300

This short emergency cart includes a heat sealed powder coat steel break-away lock bar w/100 numbered seals, 24" of vertical drawer space, full extension drawer slides, an antimicrobial and removable plastic top, protective bumpers, ergonomic handles and premium 5" quiet rolling Tente® casters.



This five-drawer cart has a bottom compartment with a 12" flip up door for ideal storage of large equipment. Other features include a side drop shelf, O2 holder, IV pole, utility hooks, premium casters, full extension drawer slides, an antimicrobial plastic top and a breakaway bar with 100 seals.



## MD30-EMG ACCESSORY PACKAGE

For MDS30/MPA30 carts, this Basic Package includes:

- Oxygen tank holder (O2HLDR)
- Cardiac board and brackets (MD-CARDBRD)
- IV pole (MD-IV2)



MDS3030B06 +MD30-EMG

Provides an optimal crash cart setup for your facility with premium Tente® casters, top quality drawer slides and the MD30-EMG package which includes the most commonly requested accessories.



MDS3024B05

Replaces the 6330

This M-Series crash cart features premium Tente® casters, full extension drawer slides and a breakaway bar with 100 plastic seals. M-Series carts allow numerous customizable options, including lock style, color, drawer configurations and even other heights and widths if you choose.





## M3DSI824B05+MD18-EMG

Narrow emergency carts like this can be situated in small, tight spaces while still storing an abundance of emergency supplies.

Comes with an MD18-EMG emergency accessory package which consists of an IV pole, cardiac board, side push handle and O2 holder.

Replaces the 3145B-EMG



## EMERGENCY CRASH CARTS

### MDS2430B06+MD24-EMG

This tall, medium width M-Series cart comes with Harloff's MD24-EMG emergency accessory package which includes an oxygen tank holder, cardiac board and IV pole.



### MD24-EMG ACCESSORY PACKAGE

**For MDS24/MPA24 carts, this Basic Package includes:**

- Oxygen tank holder (O2HLDR)
- Cardiac board and brackets (MD-CARDBRD)
- IV pole (MD-IV2)



### MD18-EMG ACCESSORY PACKAGE

**For MDS18/MPA18 carts, this Basic Package includes:**

- Oxygen tank holder (O2HLDR)
- Cardiac board and brackets (MD-CARDBRD)
- IV pole (MD-IV2)
- Aluminum Push Side Rail (SIDERAIL16)



### M3DSI824B05

Replaces the 3145B

Narrow emergency carts like this can be situated in small, tight spaces while still storing tons of supplies. This cart offers 24" of vertical drawer space, a painted breakaway locking bar with 100 plastic seals, a white antimicrobial plastic top and 3" stem casters.



View emergency cart locking options on page 88

### MDSI830B06+MD18-EMG

This mini-width M-Series cart comes with the MD18-EMG emergency accessory package which consists of a medical-grade IV pole, cardiac board, side push handle and oxygen tank holder.



Replaces the 3156B-EMG



# VALUE EMERGENCY CRASH CARTS

## V30-6EMG2

V-Series crash carts feature Harloff's quality construction offered at a value price. The accessory package includes the most requested exterior mounted accessories.



## V24-4EMG2

This crash cart is designed for healthcare facilities under budget pressure that require a durable, fully equipped emergency cart offering quality construction at a value price. Includes an IV pole, cardiac board, drop shelf, O2 holder, painted steel top rail, plastic top and drawer trays.



## V30-6EMG

V-Series crash carts feature Harloff's quality construction offered at a value price. This model includes a cardiac board, side mounted drop shelf, IV pole and O2 holder. This six drawer crash cart comes equipped with a breakaway bar with 100 plastic seals.



## V24-4EMG

V-Series carts provide a durable, fully equipped emergency cart offering Harloff's quality construction at a value price. Includes two 3" drawers, one 6" drawer and one 12" drawer plus an emergency accessory package.



## V24-4B

Designed for healthcare facilities under budget pressure, V-Series carts provide a durable emergency cart that offers Harloff's quality construction at a value price. This four drawer cart comes with a side rail, protective bumpers and 5" ball bearing casters.



## V30-6B

V-Series carts are designed for healthcare facilities with limited budgets. This crash cart has a top rail, breakaway bar and six storage drawers.



## MDS3030B09PED-EMG

The included IV pole, oxygen tank holder, cardiac board, drop shelf and utility hooks ensure you have all the necessary emergency equipment to treat pediatric patients. This M-Series cart is also highly customizable.



Replaces the 6401PEC

## PEDIATRIC EMERGENCY CARTS

### MDS3030B09PED

Designed for pediatric emergencies, this cart uses a multi-colored drawer labeling system comparable to the Broselow color coding method.



Replaces the 6400PEC

### MPA3030B09PED

This lightweight aluminum version of our pediatric cart has individual breakaway bars on each of its nine drawers, making restocking easy.



## ADDITIONAL MODELS

All carts can be equipped with any lock type and most can accommodate additional accessory packages.

Item #	Description
MDS3027B05	M-Series Steel Crash Cart, Medium Height, Standard Width, 5-Drawer, Breakaway Lock
MDS3027B06	M-Series Steel Crash Cart, Medium Height, Standard Width, 6-Drawer, Breakaway Lock
MDS3021B14	M-Series Steel Crash Cart, X-Short Height, Standard Width, 4-Drawer, Breakaway Lock
MDS3021B15	M-Series Steel Crash Cart, X-Short Height, Standard Width, 5-Drawer, Breakaway Lock
MDS2424B05	M-Series Steel Crash Cart, Short Height, Medium Width, 5-Drawer, Breakaway Lock
MPA3030B07	A-Series Tall, Standard Width, 7-Drawer cart with Breakaway Lock replaces AL810B7
MPA3027K06	A-Series Medium Height, Standard Width, 6-Drawer cart with Key Lock replaces AL809K6
MPA3027B06	A-Series Medium Height, Standard Width, 6-Drawer, Breakaway Lock replaces AL809B6

## CRASH CARTS ORDER SHEET

Item #	Description
MPA3027B05	A-Series Medium Height, Standard Width, 5-Drawer, Breakaway Lock replaces AL809B5
MPA3024B05	A-Series Short, Standard Width, 5-Drawer cart with Breakaway Lock replaces AL808B5
MPA2424B05	A-Series Aluminum Crash Cart, Short Height, Medium Width, 5-Drawer, Breakaway Lock
MPA1830B06	A-Series Narrow, Short Height, 6-Drawer cart with Breakaway Lock replaces AL3256B
MPA1824B05	A-Series Narrow, Short Height, 5-Drawer cart with Breakaway Lock replaces AL3245B
MDS3030B09PED+MD30-EMG3 MDS3030B09PED pediatric cart plus a MD30-EMG3 emergency accessory package	
V24-3B	V-Series 3-Drawer Short Crash Cart
V24-5B	V-Series 5-Drawer Short Crash Cart
V30-5B	V-Series 5-Drawer Tall Crash Cart



# CUSTOM AND UNIQUE PROJECTS

*Harloff has an unparalleled ability to do custom and unique projects. Let us design the perfect cart or storage system for your facility! We have helped to pioneer small cart innovations such as bayonet mounted ball-bearing drawer slides, fully modular customizable designs and carts that ship fully assembled.*

*The carts on the right are custom solutions requested by customers with options like independent breakaway locking bars, locking bars with antimicrobial white paint and undercarriage step stool holders. Step stools allow shorter nurses to gain additional height for effective chest compressions. Harloff can make custom changes to your casters, bumpers, locks, colors, drawer options, door options, top, height, width, depth, accessories and many other cart features. Allow us to help you create your cart just the way you want it!*



## CART OPTIONS

*Harloff has standard sizes, but our manufacturing capabilities allow us to build custom carts to your specifications. This cart is a double height, double width solution designed for a multi-facility off-site SPD department.*



## SECURITY OPTIONS

*Harloff offers multiple locking options, including advanced electronic solutions. This cart uses audible anti-theft and door ajar alarms, wireless access tracking and independent drawer locking options.*



## DOOR OPTIONS

*Our medical storage cabinets come with your choice of solid, glass-paneled or tambour doors, but sometimes custom options are needed. This two column MedStor Max cabinet was built with dual sliding doors secured with a key lock.*







## TOP QUALITY LOCKS FOR MAXIMUM SECURITY AND STORAGE

*Harloff manufactures the highest quality anesthesia storage carts in a variety of sizes, ideal for use in surgical environments to increase operating room efficiency and improve the patient experience. Anesthesia carts require proper security and strict access control to protect medications and supplies stored within. Many anesthesiologists maximize their cart's storage capabilities by outfitting them with back rails, tilts bins, side rails, hooks and other accessories, all of which are offered by Harloff.*

## ANESTHESIA CARTS

*Harloff anesthesia carts provide secure and convenient access to controlled substances, medications and other supplies that practitioners require. We offer multiple configurations of anesthesia carts for a variety of medical settings, available in both all-steel construction or light-weight aluminum with heat sealed powder coat finishes. Best of all, our anesthesia carts all come with Harloff's twelve year manufacturer's warranty.*



Engineered and  
Manufactured in the U.S.



MPA3030WLP16

# ANESTHESIA CARTS

Equip your cart with an accessory package for an ideal anesthesia cart setup, or select from other options or accessories! M-Series and A-Series offer you choices.

## MDS3030E06+MD30-ANS3

Replaces  
the 7456E

This popular M-Series anesthesia cart includes the MD30-ANS3 Anesthesia Package, Harloff's most comprehensive and robust package for anesthesiologists. It is constructed with full extension drawer slides, premium casters, protective bumpers, ergonomic handles, an antimicrobial plastic top and 30" of vertical drawer space. This complete setup offers an ideal cart, accessory and drawer configuration but, like any M-Series cart, can be customized to match your exact specifications.



## MD30-ANS3 ACCESSORY PACKAGE

**For MDS30/MPA30 carts\*, this Deluxe Anesthesia Package includes:**

- 3-Tier Back Rail (MD30-RBR3)
- (3) 12" Side Rails (SIDERAIL12)
- Large Utility Basket (BASKET3RC)
- Tape and Label Dispenser (LABELDISP)
- Catheter Box (CATHBOX18RC)
- (2) Standard 3"



Drawer Dividers with Tray (MD30-TRAYDIV3-S)

- (1) Basic 6" Drawer Divider (MD30-DIV6-B)
- 5-Compartment Tilt Bin w/Rail Clips (TILTBIN5RC)
- Sharps Container w/Wire Holder (MD-SHARPS-RC)
- Plastic Waste Container (MD-3GALWASTEDM)

## MD30-ANS ACCESSORY PACKAGE

**For MDS30/MPA30 carts, this Basic Anesthesia Package includes:**

- 3-Tier Back Rail (MD30-RBR3)
- (3) 12" Side Rails (SIDERAIL12)
- 5-Compartment Tilt Bin with Rail Clips (TILTBIN5RC)



## MPA3030E07+MD30-ANS

A light seven drawer e-lock anesthesia cart comes with a basic accessory package.



Replaces the AL810E7-ANS

## MPA3030EKC06

Replaces the  
AL810EKC6

This A-Series lightweight aluminum cart comes with ergonomic handles, fully curved bumpers, 5" quiet rolling Tente® casters and an electronic keypad lock with automatic re-locking drawers and access rights for up to 250 users.





## MDS3030K16+MD30-AIRWAYPKG

Replaces  
the 6457

This M-Series difficult airway cart securely stores laryngoscope blades, forceps, tubes, catheters and supplies to help manage intubations or failed airways. The included accessory package (MD30-AIRWAYPKG) includes a four-capacity side scope cabinet, an adjustable overhead shelf with tilt bins, utility hooks, a side rail and an oxygen tank holder. This six drawer key locking cart features an antimicrobial plastic top, highly mobile premium Tente® casters, an easily cleaned heat sealed powder coat finish and fully customizable drawer configurations to match all your needs.



## ANESTHESIA CARTS

### MD30-AIRWAYPKG ACCESSORY PACKAGE

**For MDS30 & MPA30 carts, this Difficult Airway Package includes:**

- Adjustable Overhead Shelf (MD30-ADJSHLF2)
- 5-Compartment Tilt Bin w/Rail Clips (TILTBIN5RC)
- Oxygen tank holder (O2HLDR)
- 4-Scope Capacity Side Scope Cabinet (680350)
- (1) 16" Side Rail (SIDERAIL16)
- (2) Utility hooks (UHOOKS2)
- (2) Standard 3" Drawer Dividers w/Tray (MD30-TRAYDIV3-S)
- (1) Basic 6" Drawer Divider (MD30-DIV6-B)



### MPA3027K06+MD30-ANS

This lightweight A-Series six drawer cart features our MD30-ANS anesthesia accessory package.



Replaces the AL809K6-ANS

### MDS3030K06

Customizable M-Series cart features:

- Key lock with two keys
- Full extension drawer slides
- Antimicrobial plastic top, removable
- 30" of vertical drawer space
- 5" quiet rolling Tente® casters





# ANESTHESIA CARTS

MDS3030K06+MD30-ADJSHLF2-XBAR

## MPA3030WLP16

This A-Series cart has a premium CompX® wifi-capable lock with alarms and reports via email, text, fax and voice. It allows up to 3,000 user codes with a wireless audit of the last 15,000 access attempts via the control pad or proximity reader.



## MDS3030E16

This six drawer M-Series cart is secured with an electronic pushbutton lock with key lock override and factory-set user/supervisor codes.



Replaces the 7450E

This key locking M-Series cart can hold a printer or other light equipment with two adjustable overhead shelves. Each shelf measures approximately 14" x 27" and can hold up to thirty pounds. *Replaces the 6650*



## MDS3030K06+MD30-ANS2

Store the tools you need for putting patients safely under anesthesia with this M-Series cart. Industry best 5" quiet rolling Tente® casters provide excellent mobility between rooms while ergonomic side handles and protective bumpers ensure easy transport. Full extension drawer slides give easy access to your equipment, and this optimal drawer configuration gives you plenty of storage space. This cart includes Harloff's MD30-ANS2 Standard Anesthesia Package.



## MD30-ANS2 ACCESSORY PACKAGE

**For MDS30/MPA30 carts\*, this Standard Anesthesia Package includes:**

- 3-Tier Back Rail (MD30-RBR3)
- Sharps Container w/Wire Holder (MD-SHARPS-RC)
- (3) 12" Side Rails (SIDERAIL12)
- (2) Utility hooks (UHOOKS2)
- Catheter Box w/Rail Clip (CATHBOX18RC)
- 5-Compartment Tilt Bin w/Rail Clips (TILTBIN5RC)
- (1) Standard 3" Drawer Divider with Tray (MD30-TRAYDIV3-S)
- (1) Basic 6" Drawer Divider (MD30-DIV6-B)



## MDS3030K06+MD30-ANS

Replaces  
the 6451

This tall M-Series cart includes the MD30-ANS accessory package which features our most commonly requested items for anesthesia carts: a 3-tier-back rail, tilt bins and side rails for attaching rail clips.



Replaces  
the AL810E7

## MPA3030E07

A-Series carts are constructed from light, durable aluminum that allows you to effortlessly push them from one room to another. This 7-drawer cart has 30" of vertical drawer space plus a pushbutton e-lock.



# ANESTHESIA CARTS

## MDS3036K08

This M-Series XX-Tall high capacity cart is our tallest model at nearly 49" and provides a full 36" of vertical drawer space. Built for optimal storage but still provides high mobility.



## MPA3027E06+MD30-ANS

This A-Series six drawer cart utilizes our MD30-ANS accessory package and a pushbutton e-lock.



## MDS2430E06+MD24-ANS

This cart has all the standard M-Series bells and whistles plus the MD24-ANS Anesthesia Package.



## MD24-ANS ACCESSORY PACKAGE

**For MDS24/MPA24 carts, this Basic Anesthesia Package includes:**

- 3-Tier Back Rail (MD24-RBR3)
- (3) 12" Side Rails (SIDERAIL12)
- 5-Compartment Tilt Bin with Rail Clips (TILTBIN5RC)





# ANESTHESIA CARTS

## MD18-ANS ACCESSORY PACKAGE

**For MDS18/MPA18 carts, this Basic Anesthesia Package includes:**

- 3-Tier Back Rail (MD18-RBR3)
- (3) 12" Side Rails (SIDERAIL12)
- 5-Compartment Tilt Bin with Rail Clips (TILTBIN5RC)



## MDS1830E06+MD18-ANS

*This M-Series cart fits into tight areas that don't have much free space. Comes with the MD18-ANS accessory package consisting of back rails, side rails and tilt bins.*

*Replaces the AL3256E-ANS*



## MPA1830ELP06

*The ELP lock of this narrow A-Series cart comes with a keypad and proximity reader that enables you to use existing credentials to provide HID compatible keycard access for up to 250 users per cart. This lock also allows you to program the duration before an automatic cart re-lock, and to add, edit or delete users.*



*Replaces the AL3256ELP*

## MPA1830E06

*This A-Series aluminum lightweight cart comes with self-closing, full extension drawer slides and a push-button e-lock.*



*Replaces the AL3256E*

## MDS1830E06

*Replaces the 3156E*

*Narrow enough to fit in tight spaces but still providing a full 30" of vertical drawer space, this M-Series cart is tall enough to hold all your supplies and comes with an electronic pushbutton lock and plenty of customization options.*



**Find accessories for small carts on pages 61-68**

## MPA1824K05+MD18-ANS

*This A-Series cart includes the MD18-ANS accessory package with a five compartment tilt bin, back rail and three 12" side rails.*

*Replaces the AL3245K-ANS*



# HARLOFF CAN CREATE CUSTOM SOLUTIONS FOR YOU: A CASE STUDY

*Mercy Medical Center approached Harloff to build an anesthesia cart with top notch security. Our solution included the following features:*

- A LockView® 5 compatible wireless lock utilizing 802.11g wireless protocol or Ethernet communication on existing networks. Used common security encryption methods; can program up to 3,000 user codes and audit the last 15,000 access attempts
- Built-in anti-theft drawer alarm
- Drawer ajar alarm that sounds after 30 seconds of inactivity with any drawer left open
- Able to use existing credentials and add new users with existing HID Prox and iClass compatible badges

*This cart also included an overhead shelf, 30" of vertical drawer space and standard M-Series cart features. A-Series and M-Series carts are highly customizable and offer multiple locking solutions – let us build the perfect cart for you!*



## MDS1824K05

*Replaces  
the 3245K*

*This M-Series mini width cart has tons of storage space but has a small enough profile to fit in tight areas. This highly mobile cart comes with 5" quiet rolling Tente® casters, stabilizing pontoon bumpers and smooth-gliding full extension drawer slides.*



# ANESTHESIA CARTS

## MPA1830K06+MD18-ANS

*Includes Harloff's MD18-ANS accessory package consisting of a back rail, side rails and a 5-compartment tilt bin. This A-Series cart's light aluminum build and narrow cabinet fit well into tight spaces.*



*Replaces the  
AL3256K-ANS*

## MPA1830EKC06

*This A-Series cart has an auto-locking electronic keypad that grants access rights for up to 250 users. It also provides 30" of vertical drawer space, full extension self-closing drawer slides and premium Tente® casters.*



*Replaces the  
AL3256EKC*

## MPA1824E05+MD18-ANS

*This lightweight narrow anesthesia cart comes with a three tiered back rail, side rails and a five compartment tilt bin as well as self-closing drawer slides.*



*Replaces the  
AL3245E-ANS*



# ANESTHESIA CARTS

## M3DS1824E05

Replaces  
the 3145E

This narrow M-Series cart packs a lot of storage space into a small frame. It features full-extension drawer slides, an antimicrobial white plastic top, 3" stem casters, 24" of vertical drawer space and customizable drawer configurations. Cart contents are kept well-secured by an electronic pushbutton lock that accepts up to 20 different user codes.

View  
anesthesia  
cart locking  
options on  
page 88



## MPA1824E05

Replaces  
the AL3245E

This narrow aluminum A-Series cart uses a pushbutton lock which provides code access for up to 19 different users and one supervisor. The narrow profile of this 5-drawer cart gives it a minimal footprint, perfect for facilities where every inch of floor space is at a premium.



## M3DS1830K06+MD18-ANS

Includes Harloff's MD18-ANS basic anesthesia accessory package and 3" stem casters.

Other features include full extension drawer slides, an antimicrobial plastic top and a key lock.



## ADDITIONAL MODELS

Item #	Description
--------	-------------

All carts can be equipped with any lock type and most can accommodate additional accessory packages.

MDS3027K05	Medium 5-Drawer M-Series + Key Lock
MDS2430K15	Tall 5-Drawer Medium Width M-Series
MDS1830EKC06	Tall M-Series Mini + Elec. Keypad Lock
MDS1824EKC05	Short M-Series Mini + Elec. Keypad Lock
MPA3030K06	This Tall 6-Drawer A-Series is a popular all-around model used w/accessory packages
MPA3030K16	An ideal model for difficult airway carts
MPA3030E06	Tall A-Series replaces the AL810E6
MPA3030E07	Tall A-Series replaces the AL810E7
MPA3027E06	Medium 6-Drawer cart replaces AL808E5
MPA3024E05	Short 5-Drawer A-Series + E-Lock

Customize any A-series or M-series cart with your choice of accessory packages to create the ideal anesthesiologist room setup.



Item #	Description
MPA2427E05	Medium Height & Width 5-Drawer A-Series
MPA1830K06	Tall 6-Drawer A-Series replaces AL3256K
MPA1830E06	Tall A-Series Mini replaces the AL3256E
MPA1824K05	Short 5-Drawer A-Series replaces AL3245K
MPA1824EKC05	Short A-Series Mini replaces AL3245EKC
MPA1821ELP03	X-Short 3-Drawer A-Series Mini + Elec. Keypad Lock with Proximity Reader replaces the AL3233ELP



# IT TOOK A PANDEMIC TO REALIZE THE VALUE OF INFECTION CONTROL

*The need for proper infection control and isolation measures at medical facilities across the globe has never been higher than today. Having a secure place to store PPE for your hard-working staff is vital. Harloff isolation carts typically feature deep drawers and removable antimicrobial tops. Multiple sizes, configurations and colors of carts are available although most come in a yellow color indicative of isolation areas.*

## ISOLATION CARTS

***Isolation carts, also referred to as infection control carts, are intended to help prevent the spread of infectious illness and disease within a healthcare setting. Storage solutions for PPE supplies help to reduce the risk of pathogen transmission between patients, healthcare workers and visitors.***

***Stopping the spread of VREs, MRSAs and other infectious microbes can help save hospitals millions of dollars as well as improve patient outcomes. Our carts help lower hospital costs and liability by limiting the number of healthcare acquired infections.***



Engineered and  
Manufactured in the U.S.



MPA2430EKC16



# INFECTION CONTROL CARTS

## MDS2424E05

Replaces  
the 4245E

Formerly called the Mini24, this cart with 18.5" wide drawers is a happy medium between the full width cart and the minis. Includes full extension drawer slides, fully curved protective bumpers, an anti-microbial plastic top and an electronic pushbutton lock with key lock override.



## M3DSI830K04-PPE

This four drawer, key locking PPE cart has ample storage for face shields, masks, medical gloves, gowns and footwear plus it comes with a Sani-Wipe holder and triple glove box holder. It uses one of our most popular cart bodies.



**QuickShip**

available in Yellow color

## MDS3030K03

Replaces  
the 6510

With one 6" drawer and two 12" deep drawers, this cart has plenty of storage space for all your PPE. Ergonomic side push handles and premium 5" Tente® casters provide optimal mobility and full extension drawer slides allow easy access to drawer contents.



## MDS3030K04

Replaces  
the 6520

This top selling infection control cart has one 3" drawer and three 9" deep drawers. Further customize your cart with accessories such as drawer dividers, tilt bins and glove boxes.



**QuickShip**

available in Yellow color

## M3DSI824K03

Replaces  
the 3143K

This short mini-width cart helps organize all your PPE and other supplies in one mobile, secure location. Three large drawers, each with full extension drawer slides offer up to 24" of vertical drawer space. Includes an antimicrobial plastic top, 3" stem casters and multiple customizable options.



View infection  
control cart  
locking options  
on page 88

## M3DSI830K04-VC

This vaccine cart comes with four drawers of dry storage for vaccine preparation, along with a triple glove box holder and sharps container for syringes. This is a great solution for vaccination efforts that don't require cold storage.



## VR4300K-AC

Administer the COVID-19 vaccine and other refrigerated vaccines easily with this vaccine cart, which has a built-in medical-grade lab quality refrigerator that keeps supplies at 2° C with 2.4 cubic feet of space for cold storage. Three top drawers provide space for additional supplies.



## INFECTION CONTROL CARTS

Replaces  
the AL3244K

### MPA1824K04

This narrow lightweight aluminum cart offers 24" of vertical drawer space, secured by a standard key lock with two keys. Features premium 5" Tente® casters, a white antimicrobial plastic top, new full-extension self-closing drawer slides and the industry's only fully-curved protective bumper.



Replaces  
the 3154K

### M3DS1830K04

One of our top-selling items during the pandemic, this cart combines premium PPE storage abilities with a small footprint in one economical package. Comes with a key lock, 3" single wheel stem casters and 30" of vertical drawer space.



### MPA2430EKC16

This lightweight aluminum cart has a highly secure electronic keypad lock plus a six drawer configuration for maximum storage. All A-Series carts include 5" premium casters, pontoon bumpers and self-closing drawer slides.



### 3123

The IV Start Cart is designed to reduce the risk of accidental needle sticks to patients and staff while improving the efficiency of IV and epidural procedures. Features a dual work surface, articulating arm, waste container and Sharps container. Comes with either a latch or key lock to secure the four full extension drawers.



### 3256KP8

This phlebotomy cart has 30" of vertical drawer space secured with either a key or latch lock and it comes with two 6-compartment tilt bins, a raised back rail, a waste container, a single glove box holder and extended push handle. Phlebotomy carts keep your supplies nearby, are mobile, provide a dedicated work surface for procedures and allow quick disposal of used needles.





# INFECTION CONTROL CARTS

## V30-4K

V-Series Carts are value-priced and used in a variety of hospital departments. This drawer configuration is a popular choice for isolation carts and features a key lock, side rail push handle and plenty of room for accessories.



Find accessories for small carts on pages 61-68

## V30-3K

This tall three drawer V-Series cart comes with a key lock, side rail push handle, corner bumpers, 5" ball bearing casters and 30" of vertical drawer space with plenty of room for PPE and other supply storage.



## MDS3030E03

Replaces the 7510E

Add additional security to your cart with an electronic pushbutton lock that stores access codes for up to twenty users.

Other features include:

- Full extension drawer slides
- Antimicrobial plastic top, removable
- Ergonomic side push handles
- 30" of vertical drawer space
- Fully curved protective bumper
- 5" quiet rolling Tente® casters



## OTHER INFECTION CONTROL CARTS

Item #	Description
M3DS1824E03	M-Series Short Mini Cart, 3-Drawer, 3" Stem Casters, E-Lock, replaces 3143E
M3DS1824E04	M-Series Short Mini Cart, 4-Drawer, 3" Stem Casters, E-Lock, replaces 3144E
M3DS1824K04	M-Series Short Mini Cart, 4-Drawer, 3" Stem Casters, Key Lock, replaces 3144K
M3DS1830K16	M-Series Tall Lightweight Aluminum Cart, Mini, 6-Drawer, 3" Stem Casters, Key Lock
MDS2424E03	M-Series Short Medium Width Cart, 3-Drawer, E-Lock, replaces 4243E
V30-3K	V-Series 3-Drawer Cart, Tall, Key Lock
V24-3K	V-Series 3-Drawer Cart, Short, Key Lock
V30-4B	V-Series 4-Drawer Cart, Tall, Breakaway Lock
V30-4K	V-Series 4-Drawer Cart, Tall, Key Lock

## ADDITIONAL MODELS

### Vaccine Carts

VR4302K-AC Two drawer version of the VR4300K-AC

VF4250K-AC Two drawer vaccine freezer cart with a 3.2 cubic feet Accucold® freezer that cools down to -25° C

### Phlebotomy Carts

3254KPB Four drawer version of the 3256KPB

3256LPB 3256KPB with a latch lock

**INFECTION CONTROL CARTS  
HELP LOWER MEDICAL COSTS  
BY REDUCING THE NUMBER OF  
HOSPITAL ACQUIRED INFECTIONS**



# IMPROVE EXAM EFFICIENCY WITH TREATMENT & PROCEDURE CARTS

*Treatment carts are the perfect solution when you need to store topical ointments, eye, ear, nose and throat supplies, wound care supplies and other bulkier nursing supplies including surgical apparel, masks, dressing disposal bags and blankets. These carts are seen throughout medical facilities including in hospital floors, nursing units, specialty clinics, operating rooms and treatment rooms.*

## CARTS FOR TREATMENT/ PROCEDURES

*Treatment and procedure carts are the perfect solution for storing all the supplies for wound care and other general patient needs in one place. Our carts help keep numerous small supplies well organized for efficient and effective application to improve patient outcomes and experience.*

*Harloff offers a variety of specialized cart configurations to fit your needs, including top of the line A-Series lightweight aluminum carts, M-Series all-steel construction carts and economy lines like ETC carts or V-Series models.*



**Engineered and  
Manufactured in the U.S.**

M3DS1830K06





# TREATMENT/PROCEDURE CARTS

M3DS1830K06

Replaces  
the 3156K

This narrow procedure cart can fit in tight spaces and features elegant curved drawer pulls, full-extension drawer slides, 30" of vertical drawer space and 3" stem casters.



View  
procedure  
cart locking  
options on  
page 88

MDS3030K02DR

This key locking multi treatment cart includes one 3" drawer, one 6" drawer and one 21" storage compartment with an adjustable shelf secured behind a double door with a separate lock.



MPA3030E06

This lightweight A-Series aluminum cart is equipped with industry best 5" quiet rolling Tente® casters, ergonomic side push handles and fully curved protective bumpers. Also features curved drawer pulls for a durable and elegant look, self-closing full extension drawer slides and 30" of customizable vertical drawer space. This cart comes equipped with an electronic pushbutton lock.



MDS3030E16

Replaces  
the 7450E

This six drawer cart has full extension, smooth gliding drawer slides, a push-button e-lock with key lock override, ergonomic push handles, industry best Tente® casters and your choice of drawer configurations and color.



MDS3024E14

Replaces  
the 7350E

This short four-drawer cart comes with a keyless electronic pushbutton lock that stores up to 20 user codes and it can cycle up to 75,000 times before power depletion with standard batteries. It also comes with industry best Tente® casters, full extension drawer slides and ergonomic push handles.



M3DS1824K05

This narrow key locking procedure cart has a small footprint making it ideal for overcrowded rooms with limited space.

Replaces the 3145K



Replaces  
the 6450

## MDS3030K16

Built to last, this cart has a sturdy, uni-body steel construction with a scratch resistant heat sealed powder coat finish, inside and out, in your choice of over 20 colors. It also features premium Tente® casters, the industry's only fully curved bumper, full extension drawer slides and a removable antimicrobial top. Enhance your cart with one of our accessory options.



Replaces  
the AL808E5

## MPA3024E05

This A-Series cart features a light-weight aluminum construction, new curved drawer pulls, self-closing drawer slides, protective bumpers and much more. It comes configured with an electronic pushbutton lock, but users can choose between 10 different locking options.



## V30-6K

V-Series carts are value priced for facilities with limited budgets. This tall six-drawer cart features a key lock with two keys, an aluminum side rail/push handle and 30" of vertical drawer space.



Find  
accessories  
for small carts  
on pages  
61-68

## ETC-4

This four drawer ETC cart utilizes a key lock with two keys, a removable plastic top, drawer fronts with integrated pull handles, roller drawer slides and 3" stem casters. ETC carts are budget friendly, basic carts ideal for bedside use.



## V24-5K

This short five drawer V-Series cart has 24" of vertical storage using three 3" drawers, one 6" drawer and one 9" drawer. Comes with a key lock, side rail/push handle, corner bumpers, 5" ball-bearing casters and full extension drawer slides.



## ETC-5

ETC carts are an ideal solution for budget driven facilities requiring mobile storage for supplies. The short height of these carts is perfect for bedside use, but their compact size can fit clinics, doctor offices, schools and veterinary centers too. This key locking cart features 3" stem casters.





# TREATMENT/PROCEDURE CARTS

## MDS3024K14

Replaces  
the 6350

This short four drawer M-Series cart features industry best Tente® casters for quick movement, full extension drawer slides and ergonomic handles. All M-Series carts allow numerous customizable options including lock style, color, drawer configurations and even custom heights and widths if needed.



## MPA2427E05

This e-locking A-Series cart is made from extremely lightweight aluminum, ideal for carts that are moved frequently. Features curved drawer pulls and self-closing full extension drawer slides.



## V30-2K



## V24-3K



## ADDITIONAL MODELS

Item #	Description
MPA3030K06	Tall A-Series with 3,3,3,6,6,9 drawer config
MPA3030K07	Tall A-Series with 3,3,3,3,3,6,9 drawer config
MPA3024K05	Short A-Series replaces the AL808K5
MPA1830E06	Tall A-Series Mini replaces the AL3256E
MPA1824EKC05	Short A-Series replaces the AL3245EKC
MPA1821ELP03	X-Short A-Series replaces the AL3233ELP
MPA1821K03	X-Short A-Series replaces the AL3233K
MDS3030K06	MDS3030K16 with 3,3,3,6,6,9 drawer config
MDS3030EKC06	MDS3030K06 + Electronic Keypad Lock
MDS3036K08	XX-Tall M-Series with 36" of vertical drawers
MDS1821E14	X-Short M-Series with four drawers + E-lock
V24-4K	V-Series 4-Drawer Short Cart with Key Lock
V24-5K	V-Series 5-Drawer Short Cart with Key Lock

**ETC AND V-SERIES VALUE LINE CARTS ARE COST EFFECTIVE AND OUR SPACE SAVER DESIGNS CAN BE USED IN AREAS WITH LIMITED SPACE TO SECURE SUPPLIES**

Item #	Description
V24-8K	V-Series 8-Drawer Short Cart with Key Lock
V30-2K	V-Series 2-Drawer Tall Cart with Key Lock and 21" Locking Storage Compartment with Shelf
V30-5K	V-Series 5-Drawer Tall Cart with Key Lock
V30-6K	V-Series 6-Drawer Tall Cart with Key Lock
ETC-3	Economy 3-Drawer Short Cart with Key Lock, plus a 12" Bottom Open Storage Compartment
ETC-1-1D	Economy 1-Drawer Short Cart with Key Lock, plus a 17" Bottom Open Storage Compartment with Shelf



# INCREASE STORAGE AND ENHANCE YOUR CART WITH ACCESSORIES

*Accessories add functionality, increase capacity and can turn your cart into a mobile workhorse that can be used for a variety of purposes.*

SCOPE4CAB-L

## SMALL CART ACCESSORIES

*Accessories allow a variety of cart customizations in order to meet specific needs or to improve utilization in a variety of medical environments.*

*Harloff carries a wide array of accessories for all of our products to help you customize your cart to suit your specific needs. If an accessory that you need is not listed in this catalog, please do not hesitate to contact us and a member of our amazing customer service team will be happy to help you!*



**Engineered and  
Manufactured in the U.S.**



# SMALL CART ACCESSORIES

MRI-Safe  
version  
available



3 Gal Bemis® Sharps  
Container w/Wire Holder

**MD-SHARPSRC**

with Direct Mount

**MD-SHARPSDM**

MRI-Safe  
version  
available



Bemis® Plastic Waste  
Container, 3 gal.,  
with Wire Holder

**WASTE3GALDM**

with Direct Mount

**WASTE3GALRC**



Bemis® Locking Sharps  
Container Holder with  
5 qt. Sharps Container  
& Plastic Glove Box  
13.5"W x 17"H x 5.5"D

**LKSHRPHOLD5Q-GLV**



Bemis® Locking Sharps  
Container Holder with  
5 qt. Sharps Container  
13.5"W x 11.5"H x 5.5"D

**LKSHRPHOLD5Q**

MRI-Safe  
version  
available



Universal Sharps  
Container Bracket,  
Holds Multiple Brands  
& Sizes of Containers

**UNIVBRKT**



Aluminum Waste  
Container & Mounting  
Bracket with Lid

**AL680436**

Aluminum Waste  
Container & Mounting  
Bracket without Lid

**AL680435**

13.5"H x 6.25"W x 13"D



Utility Basket 10" L x 7.5" D x 5.25" H  
w/Three Rail Clips

**BASKET3RC**

Direct Mount

**BASKETDM**



Aluminum Push  
Side Rails

16" - **SIDERAIL16**

12" - **SIDERAIL12**

MRI-Safe  
version  
available



MRI-Safe  
version  
available

Plastic  
Waste Container  
Without Cover, 2  
gallon, Direct Mount  
10"H x 9.5"W x 6.5"D

**680408**



Locking Side Mounted  
Cabinet w/2 Adjustable  
Shelves (Left/Right)

**SIDECAB2-L**

**SIDECAB2-R**

Side Mounted  
Drop Shelf  
Without Lip  
13.75" L x 13" D

**MD-DRPSHLF**



Painted Defibrillator Shelf, Inside 12" x 20"



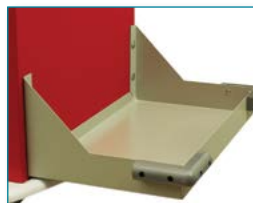
**MD-DEFIB**



IV Pole,  
2 Prong

**MD-IV2**

MRI-Safe  
version  
available



Suction Unit Holder  
w/ Corner Bumpers  
16.9" W x 9.5" D

**SUCTIONSHLF**



Breakaway Lock Seals,  
Numbered, Quantity of  
100, Comes in Yellow

**BASEALS-100**

MRI-Safe  
version  
available



Oxygen Tank Bracket  
for D/E Cylinders

**O2HLDR** (painted  
aluminum)

MRI-Safe  
version  
available



Cardiac Board

**MD-CARDBRD**



# SMALL CART ACCESSORIES



6 Socket Hospital  
Grade, 15' Cord, with  
Hooks for Cord Wrap

**MD-OUTLET6**



4 Socket Hospital  
Grade, 15' Cord with  
Hooks for Cord Wrap

**MD-OUTLET4**

MRI-Safe  
version  
available



Tape and Label  
Dispenser w/Rail Clips  
3.5" H x 9.5" W x 4.6"

**LABELDISP**



Ergonomic Push  
Handles, Pair

**68166**



Notebook Holder  
12.5" H x 12" W x 5" D

**AL2366**



Stainless Steel Top

**68152**

Heat Sealed Powder  
Coat Steel Top

**68152MS**



MRI-Safe  
version  
available

24" Raised Back  
Rails 3-Tier System

**MD30-RBR3**

**MD24-RBR3**

**MD18-RBR3**



MRI-Safe  
version  
available

Utility Hooks, Set of 2

**UHOOKS2**

Utility Hooks, Set of 4

**UHOOKS4**



2 Compartment Cath  
Boxes w/Rail Clips  
18" H x 6" W x 5.5" D

**CATHBOX18RC**

36" H x 6" W 5.5" D

**CATHBOX36RC**

(Direct Mount  
Options Available)



Set of 3 Aluminum  
Bins, Direct Mount

**FLUIDTRAY3**

Single Fluid Tray,  
Direct Mount

**FLUIDTRAYI-DM**

Single Fluid Tray,  
Rail Clips

**FLUIDTRAYI-RC**

Painted to Match Cart

**MD30-TOPRAIL**

**MD24-TOPRAIL**

**MD18-TOPRAIL**

Antimicrobial paint, white only

**MD30-TOPRAIL-AM**

**MD24-TOPRAIL-AM**

**MD18-TOPRAIL-AM**



Chart Holder  
Direct Mount

**CHARTHLDROM**

With 2 Rail Clips

**CHARTHLDRC**

10.5"H x 12"W x 3"D



Glove Box Holder  
Single Direct Mount

**GLOVEBOXIDM**

Single Rail Clips

**GLOVEBOXIRC**

5.5"H x 11.5"W x 4.1"D



Glove Box Holder  
Double Direct Mount

**GLOVEBOX2DM**

Double Rail Clips

**GLOVEBOX2RC**

10.9"H x 10.6"W x 3.6"D



Glove Box Holder  
Triple Direct Mount

**GLOVEBOX3DM**

Triple Rail Clips

**GLOVEBOX3RC**

16"H x 10.6"W x 3.6"D



Vertical Mount  
Glove Box Holder

**GLOVEBOX3VDM**

27.9"H x 5.5"W x 4.1"D

# SMALL CART ACCESSORIES

MRI-Safe  
version  
available

MRI-Safe  
version  
available

4-Compartment Tilt Bin  
Rail Clips **TILTBIN4RC**  
Direct Mount **TILTBIN4DM**

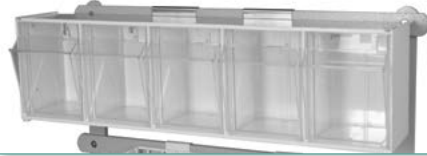
compatible  
with any  
Harloff rail  
systems

MRI-Safe  
version  
available



Tilt Bin, 5-Compartments  
Rail Clips **TILTBIN5RC**  
Direct Mount **TILTBIN5DM**

compatible  
with any  
Harloff rail  
systems



Tilt Bin, 6-Compartments  
Rail Clips **TILTBIN6RC**  
Direct Mount **TILTBIN6DM**

compatible  
with any  
Harloff rail  
systems



Coat/Hat Rack  
**680412**  
Adjustable  
Coat/Hat Rack  
**680412ADJ**



Drawer Labeling Kit,  
Pack of 10  
**602005**



Monitor Mount  
Ergotron Arm  
**MNT-HLDR**



Laptop Shelf, Adjust-  
able Height & Swivel  
**SHELF-LAPTOP**



Articulating Computer  
Arm with Laptop Shelf  
**LTP-HLDR**



## MD30 ADJUSTABLE SHELF

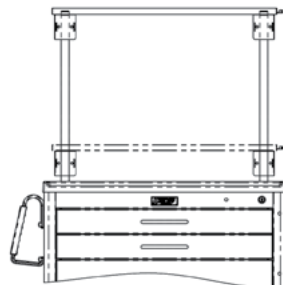
22" H x 28" W  
x 14" (height  
adjusts to 5" at it's  
lowest position)

Maximum shelf  
capacity:  
30 lbs



Adjustable Overhead Shelf, includes  
adjustable Accessory Hanger Rail

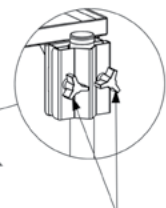
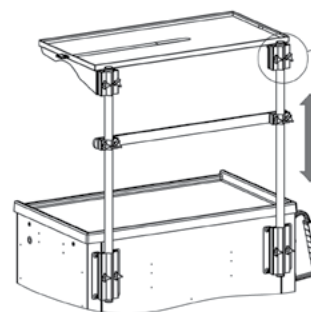
**MD30-ADJSHLF**



Single Shelf,  
No Accessory Bar

**MD30-ADJSHLF-XBAR**

Single Accessory Bar  
**MD30-ADJSHLFBAR**



• Loosen knobs to  
slide shelf and rail  
to desired height

• Tighten knobs to  
secure into position



Single Shelf,  
One Accessory Bar

**MD30-ADJSHLFBAR1**



Single Shelf,  
Two Accessory Bars

**MD30-ADJSHLFBAR2**



Two Shelves,  
No Accessory Bars

**MD30-ADJSHLF2-XBAR**



Two Shelves,  
One Accessory Bar

**MD30-ADJSHLF2BAR1**

# SMALL CART ACCESSORIES



Side Mounted Scope Cabinet, holds 4 scopes

**SCOPE4CAB-L**

Side Mounted Scope Cabinet, holds 2 scopes

**SCOPE2CAB-L**



MRI-Safe version available

3" Drawer Tray w/Adjustable Dividers, Fits 2 per drawer in MDS30, 1 per drawer in MDS24 & MDS18

2.5" H x 11" W x 16.5" D

**EXTRAY3**

6-Compartment Drawer Tray, Fits 1 per drawer in MDS18, 2 per drawer in MDS24 & 3 per drawer in MDS30



**TRAY6COMP**

14.5" L x 7.6" W x 1.75" H

6" Drawer Tray w/Adjustable Dividers, Fits 2 per drawer in MDS30, 1 per drawer in MDS24 & MDS18

5.25" H x 11" W x 16.5" D



MRI-Safe version available

**EXTRAY6**

7-Compartment Drawer Tray, Fits 1 per drawer in MDS18, 2 per drawer in MDS24 & 3 per drawer in MDS30



**TRAY7COMP**

14.5" L x 7.6" W x 1.75" H

# SMALL CART DRAWER ALTERNATIVES

Dimensions	MDS30 body	MDS24 body	MDS18 body
9" vertical drawer space	<b>MD30-DRW9-EH</b> (open) <b>MD30-DRW9-EHDR</b> (closed) 8" H x 24.625" W	<b>MD24-DRW9-EH</b> (open) <b>MD24-DRW9-EHDR</b> (closed) 8" H x 18.625" W	<b>MD18-DRW9-EH</b> (open) <b>MD18-DRW9-EHDR</b> (closed) 8" H x 12.625" W
12" vertical drawer space	<b>MD30-DRW12-EH</b> (open) <b>MD30-DRW12-EHDR</b> (closed) 11.125" H x 24.625" W	<b>MD24-DRW12-EH</b> (open) <b>MD24-DRW12-EHDR</b> (closed) 11.125" H x 18.625" W	<b>MD18-DRW12-EH</b> (open) <b>MD18-DRW12-EHDR</b> (closed) 11.125" H x 12.625" W
18" vertical drawer space	<b>MD30-DRW18-EH</b> (open) <b>MD30-DRW18-EHDR</b> (closed) 17.375" H x 24.625" W	<b>MD24-DRW18-EH</b> (open) <b>MD24-DRW18-EHDR</b> (closed) 17.375" H x 18.625" W	<b>MD18-DRW18-EH</b> (open) <b>MD18-DRW18-EHDR</b> (closed) 17.375" H x 12.625" W

Replace 9", 12 or 18" of vertical drawer space at the top or bottom of your A-Series or M-Series cart with an equipment holder for storing electronics or large medical equipment

- 17" deep open equipment holding area replaces standard drawer areas
- 2" pass-through hole in rear for cords and cables

## CLOSED DOOR AND OPEN EQUIPMENT HOLDERS



Replace 12" of vertical drawer space at the bottom of your A-Series or M-Series cart with a flip-up door. Shown on a 30" wide cart, but also available for 24" and 18" carts.

**MD30-FDR12**



Replace any number of drawers in your A-Series or M-Series cart with side panels, capable of holding trays or baskets. This option is only available for 30" wide carts.

**MD30-DRW15-EH-HH**





# MDS30/MPA30 ADJUSTABLE DIVIDER SETS

## FOR 3" DRAWERS



*BASIC*  
3 long, 3 short dividers  
**MD30-DIV3-B**



*STANDARD*  
4 long, 5 short dividers  
**MD30-DIV3-S**



*PREMIUM*  
3 long, 5 short, multiple  
other lengths of dividers  
**MD30-DIV3-PI**



*PREMIUM  
ANESTHESIA PACKAGE*  
4 long, 6 short dividers  
**MD30-DIV3-P2**

## FOR 3" DRAWERS, WITH TRAY



*BASIC*  
3 long, 3 short dividers  
**MD30-TRAYDIV3-B**



*STANDARD*  
4 long, 5 short dividers  
**MD30-TRAYDIV3-S**

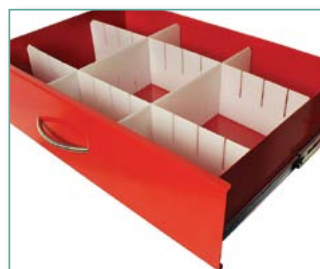


*PREMIUM*  
3 long, 5 short, multiple  
other lengths of dividers  
**MD30-TRAYDIV3-PI**



*PREMIUM  
ANESTHESIA PACKAGE*  
4 long, 6 short dividers  
**MD30-TRAYDIV3-P2**

## FOR 6", 9" AND 12" DRAWERS



*BASIC - 6" Drawer*  
2 long, 2 short dividers  
**MD30-DIV6-B**



*STANDARD - 6" Drawer*  
3 long, 3 short dividers  
**MD30-DIV6-S**



*BASIC - 9" or 12" Drawer*  
2 long, 2 short dividers  
**MD30-DIV9-B**



*For 3" Drawers*  
  
*INSERT TRAY ONLY*  
**MD30-TRAY3**

# OTHER AVAILABLE 30" DIVIDER SETS

MD30-DIV3TRAYSET-LR  
MD30-DIV3TRAYSET-FB  
MD30-DIV3SET-LR  
MD30-DIV3SET-FB

MD30-DIV9SET-LR  
MD30-DIV9SET-FB  
MD30-ADJDIV9-3FB  
MD30-DIV6SET-LR

MD30-DIV6SET-FB  
MD30-ADJDIV6-3FB

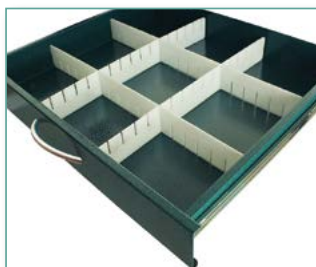
*CLEAR COVER ONLY*  
**MD30-TRAY3CLRCOV**  
*For 3" Drawers*



# MDS24/MPA24 ADJUSTABLE DIVIDER SETS



Engineered &  
Manufactured in the U.S.



*BASIC*  
2 long, 2 short dividers  
**MD24-DIV3-B**



*STANDARD*  
3 long, 3 short dividers  
**MD24-DIV3-S**



*PREMIUM*  
3 long, 3 short, multiple  
other lengths of dividers  
**MD24-DIV3-P**

**FOR 3" DRAWERS**



*INSERT TRAY ONLY*  
For 3" Drawers  
**MD24-TRAY3**



*BASIC*  
2 long, 2 short dividers  
**MD24-TRAYDIV3-B**



*STANDARD*  
3 long, 3 short dividers  
**MD24-TRAYDIV3-S**



*PREMIUM*  
3 long, 3 short, multiple  
other lengths of dividers  
**MD24-TRAYDIV3-P**

**FOR 3" DRAWERS, WITH TRAY**

*Drawer dividers help compartmentalize and organize medical supplies for better recognition and faster retrieval. Dividers are easy to configure and adjust to your evolving storage needs.*



*BASIC - 6" Drawer*  
2 long, 2 short dividers  
**MD24-DIV6-B**



*STANDARD - 6" Drawer*  
3 long, 3 short dividers  
**MD24-DIV6-S**



*BASIC - 9" or 12" Drawer*  
2 long, 2 short dividers  
**MD24-DIV9-B**

**FOR 6", 9" AND 12" DRAWERS**

## OTHER AVAILABLE 24" DIVIDER SETS

**MD24-DIV6SET-FB**  
**MD24-ADJDIV6-2FB**

**MD24-DIV9SET-LR**  
**MD24-DIV9SET-FB**  
**MD24-ADJDIV9-2FB**  
**MD24-DIV6SET-LR**

**MD24-DIV3TRAYSET-LR**  
**MD24-DIV3TRAYSET-FB**  
**MD24-DIV3SET-LR**  
**MD24-DIV3SET-FB**

# MDS18/MPA18 ADJUSTABLE DIVIDER SETS

FOR 3" DRAWERS



*BASIC*  
2 long, 2 short dividers  
**MD18-DIV3-B**



*STANDARD*  
3 long, 3 short dividers  
**MD18-DIV3-S**



*PREMIUM*  
3 long, 3 short, multiple  
other lengths of dividers  
**MD18-DIV3-P**



**Engineered &  
Manufactured in the U.S.**

FOR 3" DRAWERS, WITH TRAY



*BASIC*  
2 long, 2 short dividers  
**MD18-TRAYDIV3-B**



*STANDARD*  
3 long, 3 short dividers  
**MD18-TRAYDIV3-S**



*PREMIUM*  
3 long, 3 short, multiple  
other lengths of dividers  
**MD18-TRAYDIV3-P**



*INSERT TRAY ONLY*  
For 3" Drawers  
**MD18-TRAY3**

FOR 6", 9" AND 12" DRAWERS



*BASIC - 6" Drawer*  
2 long, 2 short dividers  
**MD18-DIV6-B**



*BASIC - 9" or 12" Drawer*  
2 long, 2 short dividers  
**MD18-DIV9-B**



## OTHER AVAILABLE 18" DIVIDER SETS

MD18-DIV3TRAYSET-LR  
MD18-DIV3TRAYSET-FB  
MD18-DIV3SET-LR  
MD18-DIV3SET-FB

MD18-DIV9SET-LR  
MD18-DIV9SET-FB  
MD18-ADJDIV9-IFB  
MD18-DIV6SET-LR

MD18-DIV6SET-FB  
MD18-ADJDIV6-IFB







# SPECIALLY MADE FOR MAGNETIC RESONANCE IMAGING SUITES

*Harloff is the only US based manufacturer to offer MR-Conditional Safe carts in both 1.5 and 3.0 Tesla magnetic resonance environments. Our carts meet the American Society for Testing and Materials (ASTM) International Designation of MR-Conditional for use in a 3 Tesla or less environment of the Magnetic Resonance Imaging Suite (testing date January 13, 2010).*

*Our carts are built primarily of non-ferrous aluminum, plastic and stainless steel for safe daily use in highly magnetic environments. We also offer Anesthesia and Emergency packages, multiple drawer configurations and extra MR-Conditional accessories.*

## MRI-SAFE MED CARTS

- Meets American Society for Testing and Materials (ASTM) International, Designation: F2503-05 definition of "MR-Conditional"
- Cabinet painted gloss white with MRI identification sticker applied
- Low-ferrous, ball-bearing, full extension drawer slides
- Low-ferrous 5" sealed ball-bearing casters
- Protective corner bumpers
- Painted aluminum pull-out shelf
- Antimicrobial plastic top with integrated push handles, removable
- Durable, heat sealed powder coat finish



Engineered and  
Manufactured in the U.S.



MR7K

# MR-CONDITIONAL CARTS

## MR6K

One of our best selling MRI carts, this model features six storage drawers, corner bumpers, low-ferrous ball-bearing casters and low-ferrous drawer slides. Like all of our MRI-Safe carts, the MR6K is constructed only from non-magnetic or "weakly magnetic" materials.



Find more MRI Safe carts on page 76

## MR6K-MAN



Has all of the same great features of the MR6K but with the addition of side rails, 3-tier back rails and full drawer tray organizers.



## MR7K-MAN

These two seven drawer MRI carts include BEST® brand locks on each cabinet with 2 keys, a replaceable plastic top and several accessories ideal for anesthesia procedures. The larger MR7K-MAN includes a pull-out shelf, the narrow version does not.

## MR6B

This six drawer MRI-Safe cart is equipped with a breakaway lock and 100 numbered yellow seals. Each Harloff MRI cart is designed for safe use in the strong magnetic fields present in MRI suites, meeting the ASTM designation of "MR-Conditional".



View details for the breakaway and key locking options on page 88

## MR6B-EMG

Has all of the same great features of the MR6B but with the addition of an IV pole, cardiac board, oxygen tank holder, utility hooks and full drawer tray organizers making this ideal for use as an emergency cart.



## MRI-SAFE ACCESSORIES

Most MRI-Safe accessories can be located in the Small Cart Accessories section on pages 62-65.

MRI-Safe version available

Item #	Description
MR-RBR2	2 Tier Raised Back Rail
MRN-RBR2	2 Tier Raised Back Rail for Narrow Carts
MR-RLHK	MRI-Safe Rail Hook
680572	MRI-Safe Adjustable Dividers, 5 long, 5 short
68530-P1	MRI-Safe Adjustable Dividers with Tray, 3" Drawers. 3 Long, 5 Short
68620-P1	MRI-Safe Adjustable Dividers w/Tray for Narrow Carts, 3 Long, 3 Short





# STORES MEDICATIONS AND INSULIN IN A MEDICAL-GRADE FRIDGE

*Harloff malignant hyperthermia carts are the perfect solution for holding your Dantrolene and other medical supplies while keeping insulin, saline and ice packs cold inside a lab-quality Follett® refrigerator.*

*These carts are offered with two different sizes of refrigerator along with multiple drawer configuration and accessory options. Harloff offers a wide range of accessory options to further equip your MH cart, or purchase one of our Malignant Hyperthermia cart packages featuring our most common accessories.*

## MALIGNANT HYPERTHERMIA CARTS

*Meet AANA and MHAUS recommendations to have the right supplies organized and quickly available. Harloff's MH Carts provide portable storage with easy access.*

*Signs of malignant hyperthermia are often not apparent until anesthesia drugs have already been administered, and this condition can be fatal if not treated promptly. Medication and ice packs are used in the immediate treatment of malignant hyperthermia, so having a dedicated MH cart nearby significantly improves medical response time.*



Engineered and  
Manufactured in the U.S.



MH5216B



# MALIGNANT HYPERTHERMIA CARTS

## FOLLETT MEDICAL GRADE REFRIGERATORS

Harloff MH carts use Follett® REF1 and REF2 refrigerators. Follett® is known within the medical field for quality & reliability. Features include:

- Stainless steel construction.
- Heavy-duty, quiet compressor and forced air cooling
- Uses non-CFC, environmentally responsible R134a refrigerant
- Cylinder door lock supports JC standard for medication storage
- Field-reversible door
- Epoxy coated wire shelves, adjustable in 1/2" increments
- Exterior LED user-programmable display shows temp, alarms and other data

Find  
more MH  
models on  
page 76

## MH5200B

Our most popular selling MH cart, the MH5200B combines the perfect balance of cold storage with two drawers of top storage. Comes with the accessories you need to create a fully equipped MH cart.



## MH5216K

Our standard cart features a 1.8 cubic feet Follett® medical-grade refrigerator. This key locking model features a smaller 1.0 cubic feet Follett® refrigerator to offer more top drawer space. Other features include a waste container with mounting brackets, two large chart/document holders and a large wire basket.



## MH5300B

Features three top drawers with a break-away bar for quick access to both room temperature and refrigerated medications, along with accessories.



## MH5100B

Our shortest Malignant Hyperthermia cart has a single top drawer with breakaway bar, ample refrigerated storage, a full complement of accessories and an antimicrobial plastic top.



## MH4300K

For those who don't need accessories or wish to purchase their own accessories separately, this three drawer, key locking cart is the lean version of our MH carts.



View  
MH cart  
locking  
options on  
page 88



## SPECIALTY CARTS

*Medical facilities may need specialized equipment to effectively serve within their particular area of patient care, and having a specialty cart or cabinet to assist with this treatment is paramount. Whether you need a cast cart for patients with broken bones, a phlebotomy cart for IV and epidural procedures, a storage cart for your IntraOcular lens boxes, a pediatric cart for your children's area or something custom made for another area of specialization, Harloff has you covered.*



Engineered and  
Manufactured in the U.S.

## SPECIALIZED CARTS FOR UNIQUE MEDICAL APPLICATIONS

*Most Harloff specialty carts were developed because of customer requests. When a customer requires a specialized solution and they trust in Harloff's unparalleled ability to make custom and unique projects, great things can happen! We are proud to offer these "niche" carts to help fill unique needs in the medical community. Perhaps your idea will become the next specialty cart to help other professionals just like you!*



6035-TC

# ORTHOPEDIC CAST CARTS

## 6035

*This popular 8-drawer cart includes a stainless steel folding side shelf, stainless steel side storage cabinet, swivel tourniquet/pump pole and scissors cable.*



## 6025

*This version of the 6035 has a cabinet and drawers made of stainless steel rather than heat sealed powder coat steel. Multiple locking options are available.*



STAINLESS  
STEEL

## ALL HARLOFF CAST CARTS FEATURE:

- Stainless steel bucket holder with vinyl mat
- 24" stainless steel ruler mounted on top of cart



- Aluminum towel bar
- Internal drawer dividers
- Corner bumpers
- 5" ball-bearing casters, all full swivel - one tracking, one with brake
- Ball-bearing full extension drawer slides
- Latex free construction

**View specialty  
cart locking options  
on page 88**

## 6035-TC

*Our top selling cast cart, this model is just like the 6035 cart but with a top compartment for extra storage.*



## 6025-TC

*This stainless steel cart is just like the 6025 cart but with a Sand colored aluminum top compartment for extra storage.*



STAINLESS  
STEEL

## 6030

*Designed in conjunction with orthopedic technicians to maximize functionality, our cast carts have one 3-inch drawer with a black vinyl mat, five 3-inch drawers with drawer dividers and two 6-inch drawers with drawer dividers.*

*This basic cast cart has a bucket holder, towel bar and mounted ruler but does not come with top shelving or a pole.*





# INTRAOCCULAR LENS CARTS AND SUTURE CARTS



## MS-IOL840

*This version holds up to 840 IOL boxes and is less than 41" tall.*

*For larger, non-standard sized IOL boxes we build custom cabinets that can meet your exact specs.*



## MS-IOL1260

*Compatible with multiple IntraOcular lens box sizes and brands including Alcon, Bausch and Lomb, Rayner and Abbot Medical Optics, this cart provides mobile storage for up to 1,260 boxes. The six pull-out drawer shelves allow for quick visual scans of the types and powers of each IOL box kept organized with six adjustable dividers per drawer. Industry best 5" quiet rolling Tente® casters improve mobility and lenses are secured with a standard key lock.*

## MS-SUTURE2-K

*This suture cart has clear acrylic doors designed for operating rooms that require secure but visible storage and transport of sutures. It features five adjustable shelves and a bottom pass through compartment which can hold several sizes of Harloff trays.*



*Comes with a key lock or an e-lock*



## MS-IOL1680

*This high volume IOL cart is the equivalent size of a full height two column MedStor Max cabinet. It features eight drawers with full extension drawer slides to hold up to 1,680 IOL boxes. This model can come equipped with optional lighting, a dimmable recessed LED that turns on automatically when doors are open. This is a perfect solution for large eye surgery centers that do 30-50 eyes per day.*



# SPECIALTY CART ORDER SHEET

## CAST CART ACCESSORIES

Item #	Description
602001	Stainless Steel Folding Shelf
602002	Stainless Steel Side Storage Cabinet, Cast Cart
602003	Tourniquet Pump Pole, Field Install
602004	Scissors Security Cable, Cast Cart (Scissors not included)
602005	Clear Label Holders, (pkg of 10)
602106	Top Compartment and Organizer, Painted Aluminum – Holds BSN® and 3M® Supplies. 22" H x 26" W x 13" D
602007	Tourniquet Pump Pole
602012	Black Vinyl Drawer Mat

## WOOD VINYL CART ACCESSORIES

Item #	Description
WV-680435	Waste container with wood grain finish
WV2359	Cup and straw holder with wood grain finish
WV-2362	Glove box holder (direct mount) with wood grain finish
WV-680325	Laptop shelf for wood grain finish carts

## ADDITIONAL MODELS

Item #	Description
<b>Malignant Hyperthermia Carts</b>	
MH5302K	One 3" and one 6" drawer with Follett refrigerator
MH4100B	MH5100B with no accessory package
MH4200B	MH5200B with no accessory package
MH4302K	MH5302K with no accessory package
MH4216B	MH5216B with no accessory package
MH carts come in key lock, breakaway or e-lock versions and can include with a Follett stainless steel refrigerator with 1.0 or 1.8 cubic feet capacity or an Accucold refrigerator with 2.4 cubic feet capacity.	

## MR-Conditional Carts

MR7B	7-Drawer MR Crash Cart, Breakaway Lock
MR7B-EMG	MR7B with EMG accessory package
MRN6B	Narrow 6-Drawer MR Crash Cart, Breakaway Lk
MRN6B-EMG	MRN6B with EMG accessory package
MRN6K	Narrow 6-Drawer MR Anesthesia Cart, Key Lock
MRN6K-MAN	MRN6K with Anesthesia package
MRN7B	Narrow 7-Drawer MR Crash Cart, Breakaway Lk
MRN7B-EMG	MRN7B with EMG accessory package
MRN7K	Narrow 7-Drawer MR Anesthesia Cart, Key Lock

## Cast Carts

6020 6030 in stainless steel

All cast cart models available in no lock, key lock, break-away or e-lock versions.

## Wood Grain Finish Carts

WV6200	Wood Vinyl 2-Drawer Multi Treatment Cart and 21" Storage Area with Adjustable Shelf
WV6400	Wood Vinyl 6-Drawer Crash Cart, also available with a side cabinet
WV6450	Wood Vinyl 6-Drawer Treatment Cart, also available in e-lock and EKC
WV6520	Wood Vinyl 4-Drawer Isolation Cart
WV70DSPN	Wood Vinyl 70 Dispill Capacity Med Cart

## CUSTOM CARTS

Many of the "specialty" carts that Harloff carries (IOL carts, phlebotomy carts, etc) were created because of customer requests. No one understands what innovations the medical industry needs better than those who are working daily in patient care. If you have an idea that you want to see materialize into a cart in the field, Harloff can help you. We have a full-time engineering staff that can assist you, and Harloff's manufacturing team gives us an unparalleled ability to do custom and unique projects. Harloff has helped to pioneer small cart innovations such as bayonet mounted ball-bearing drawer slides, fully modular customizable designs and carts shipped fully assembled. See page 44 for details.





# MODERN, AFFORDABLE AND SECURE MEDICATION STORAGE

*Harloff medication carts are manufactured to provide hospital pharmacies with highly secure medication administration in a healthcare environment. Our carts are manufactured with durable, high capacity drawers which improve medication management and ensure patient safety while also reducing costs.*

## MEDICATION CARTS

*Meet the requirements of your hospital medication distribution system with Harloff medication carts. Our goal is to help you manage complex clinical medication management issues by offering a full line of med carts to improve patient safety and reduce costs.*

*One size does not fit all — Harloff offers a wide selection in medication carts for a variety of medication dispensing systems and budgets. Carts feature secure locking systems, separately locking narcotic boxes and specialized dividers inside the drawers.*



Engineered and  
Manufactured in the U.S.



VLT24BIN5



# PUNCH CARD CARTS

## SL600PC

*This dual column punch card cart has a BEST® lock on the cabinet, a single width narcotics drawer with an Illinois lock and holds a capacity of 600 cards. The standard package includes a pull-out shelf, adjustable punch card row dividers, a plastic replaceable top with integrated push handles and premium 5" casters.*



## SL602PC

*This punch card cart has the same capacity as the SL600PC but features a larger double-width narcotics drawer in the right column. Features include full extension drawer slides, protective corner bumpers, an easy to sterilize heat sealed powder coat finish and our 12-year manufacturer's warranty.*



## SL600PC-EKC



*All the same great features of the SL600PC but secured with an electronic keypad lock that allows access rights for up to 250 users.*



## AL600PC

*All the same great features of the SL600PC but with a lightweight all-aluminum construction that makes the cart 50 pounds lighter. This cart can accommodate all types of medication packaging and offers a complete line of accessories for your storage needs.*



## AL602PC

*All the same great features of the SL602PC but with a lightweight all-aluminum construction that makes the cart 50 pounds lighter. The 600PC and the 602PC are primarily differentiated by the width of the primary column and the right narcotics drawer column.*



## SL550PC

*This single column 550 capacity punch card medication cart is ideal for those who want punch card storage but don't require large narcotics storage. A smaller single width narcotics box that uses an Illinois lock with four keys is included. The primary cart body is locked with a BEST® brand lock, also with four keys.*



## VLT360PC

*This value 360 capacity punch card cart is secured with a key lock and includes a top rail/push handle, a pull-out shelf, adjustable punch card row dividers and an in-drawer locking narcotics box. Constructed from heat sealed powder coat steel, it includes full extension drawer slides, protective corner bumpers and premium 5" Tente® casters.*



## VLT480PC

*This value 480 capacity punch card cart is made of steel and is secured with a key lock. It includes a top rail/push handle, a pull-out shelf, adjustable punch card row dividers and an in-drawer locking narcotics box.*



## PUNCH CARD CARTS

## VLT240PC

*This value 240 capacity punch card steel cart is secured with a key lock. It includes a top rail/push handle, a pull-out shelf, adjustable punch card row dividers and an in-drawer locking narcotics box.*



## SL480PC

*This thinner version of the SL600PC features a 480 punch card capacity secured with a BEST® lock, a pull-out shelf, adjustable row dividers and a single wide narcotics drawer locked by an Illinois lock. The top is replaceable and features integrated push handles.*



## VLT360EPC

*For those looking for added security, this model locks its 360 punch card capacity of medications with an electronic pushbutton lock that stores up to twenty user codes that can be programmed in the field.*



## AL460PC

*This aluminum cart holds 460 punch cards split between its two columns, and is secured by a BEST® lock on the cabinet and an Illinois lock on the in-drawer narcotics box. Also included is a pull-out shelf, punch card row dividers and premium casters.*



# MED-BIN CARTS

## VLT24BIN5

*This value med-bin cart features a 24 count of 5" med-bins (dividers and labels included) plus a 3" multipurpose top storage drawer and a 9" lower drawer with a locking narcotics box and divider. This steel key locking cart also comes with a top rail/push handle and a pull-out shelf.*



## SL28BIN5

*This dual column med-bin cart has a BEST® lock on the cabinet plus a single width narcotics drawer, similar to the SL600PC cart but with a 28 count of 5" med-bins (dividers and labels included) as well as a 3" multipurpose top drawer and a 9" lower drawer.*



## SL36BIN5

*This dual column med-bin cart features a 36 count of 5" med-bins (dividers and labels included) as well as a 3" multipurpose top drawer, plus these features: a single width narcotics drawer, full extension drawer slides, 5" ball-bearing premium rubber casters, one pull-out shelf, protective bumpers, a heat sealed powder coat steel finish and Harloff's 12-year manufacturer's warranty.*



## SL54BIN3

*This dual column med-bin cart has a BEST® lock on the cabinet plus a single width narcotics drawer, similar to the SL600PC cart but with a 54 count of 3.5" med-bins (dividers and labels included) as well as a 3" multipurpose top drawer and pull-out shelf.*



## SL54BIN3-EKC

*All the same great features of the SL54BIN3 but secured with an electronic keypad lock that allows access rights for up to 250 users. Drawers automatically re-lock after access as you may add, edit, or delete users and user groups with a lock that has an low battery indicator.*



## VLT12BIN5

*This value med-bin cart features a 12 count of 5" med-bins (dividers and labels included) plus a 3" multipurpose top storage drawer and two 9" lower drawers, one with a locking narcotics box. This steel key locking cart also comes with a top rail/push handle and a pull-out shelf.*





## CASSETTES



DISPILL®

## MEDICINE ON TIME®



## UNIT-DOSE BOXES

# OTHER MEDICATION CARTS

## VLT150MOT

*This value medication cart has a capacity of 150 Medicine On Time® cards plus a 3" multipurpose top storage drawer. An internal locking narcotics box made for M.O.T. packaging is included. This steel key locking cart also comes with a top rail/push handle and a pull-out shelf.*



**View  
medication  
cart locking  
options on  
page 88**

## SL100DSPN

*This medication cart has a capacity for 100 DISPILL® cards plus two multipurpose top storage drawers. An internal locking narcotics box designed to hold DISPILL® cards is included. This steel key locking cart also comes with a pull-out shelf and a replaceable plastic top.*



## AL24CS-5

*This medication cart features 24 count of 5" wide patient bin drawers in three aluminum cassettes (dividers and labels included) plus two 4" multipurpose storage drawers. Cassettes are located in pull-out drawers for ergonomic removal.*



## AL36CS-3

*This medication cart features 36 count of 3" wide patient bin drawers in three aluminum cassettes (dividers and labels included) plus two 4" multipurpose storage drawers. Cassettes are located in pull-out drawers for ergonomic removal.*



## SL294BOX

*This medication cart has a capacity for 294 Unit-Dose medication boxes plus a single width narcotics drawer, similar to the SL600PC cart. This steel key locking cart also comes with a pull-out shelf, a replaceable plastic top, full extension drawer slides and protective corner bumpers.*



# MEDICATION CART ORDER SHEET

## MEDICATION CART ACCESSORIES

Item #	Description
680545	Multi-Dose Drawer Divider Set, used in SL72MD. Holds 12 Bins
680540	Multi-Dose Drawer Divider Set, used in MD30-4K, MD50-6K and in 3" drawers that are 23" wide. Holds 10 Bins
680510E	Value Line Unit Dose Insert Divider Pack For One Drawer, used in 3" drawers that are 23" wide.
680574	2" Divider Set (No Tray) For 27.5" 4WAL / SL Drawer. Eight Front-to-Back, Five Left-to-Right
680572	Adjustable Dividers (no tray) for E/V-Series and Classic Line carts. Five front-to-back, five left-to-right
680571	Adjustable Dividers (no tray) for Narrow WL/WV Medication carts. Four Front-to-Back, Four Left-to-Right
AL2394	Aluminum Storage Bin, No Divider
AL2380	Dual Compartment Punch Card Drawer Organizer, Removable. Fits Two Per Row Front to Back In AL/SL/VLT Medication Cart Drawers
640346	Exchange Basket For Punch Cards – Fits VLT, SL and Optimal Carts
640616	Patient Card Divider, Pack Of 25
LEDLIGHT	Flashlight, LED Flex Neck with Magnetic Clip Mount. Uses 2 AA batteries
680327	Ergotron® Arm with Monitor Laptop Shelf. Includes Mounting Bracket. Fully Articulating. Cart Will be Drilled for Accessory If Ordered with Cart.
WV-680325	Laptop Shelf for WL480PC, WL294BOX – Aluminum, Adjustable Height, Full Swivel. Color Choice Is Hammer Black Unless Purchase Order Indicates Another Color Choice. Attaches to Rear of Cart.
AL2360	2 Section Cup/Straw Holder, with lid. Dims: 5.5" H x 19.5" W x 5" D
AL2359	3 Section Cup/Straw Holder, no lid. Dims: 5.5" H x 19.5" W x 5" D
AL680435	Waste Container (without cover), Aluminum, Includes Mounting Bracket
AL680436	Waste Container With Cover, Aluminum, Includes Mounting Bracket
WV-680435	Wood Vinyl Coated Aluminum Waste Container without lid (Please note: WV carts are not pre-drilled for accessories)
WV-2359	Wood Look Vinyl Coated Aluminum Cup & Straw Holder, Three Sections, Without Lid. (Please note: WV carts are not pre-drilled for accessories)
WV-2362	Wood Look Vinyl Coated Aluminum Single Glove Box Holder. Dims: 11.5" W x 5.5" H x 4.25" D

**NOTE:** Additional general-use accessories such as glove box holders, laptop shelves, waste containers, Sharps containers and more are also available for your med cart.

## ADDITIONAL MODELS

Item #	Description
<b>Punch Card Carts</b>	
AL460PC	Aluminum 2-column 480 card capacity with narcotics box. Available with multiple locking options and a specialty package.
SL555PC	Steel 1-column for 550 cards
SL605PC	Steel 2-column for 600 cards. Available w/multiple lock options.
SL607PC-EKC	Steel 2-column for 600 cards w/electronic locking keypad
AL8W10K4PC	Wide aluminum Universal Line with narcotics box. Available with multiple lock options
VLT245PC	Value line for 240 cards
VLT360EPC	Value line for 360 cards w/narcotics box, specialty pkg available
VLT365PC	Value line for 360 cards
VLT485PC	Value line for 480 cards
<b>Med-Bin Carts</b>	
SL42BIN3	Steel with 42 3.5" bins. Available with multiple locking options and a specialty package
VLT18BIN3	Value Line with 18 3.5" bins. Available with multiple locking options and a specialty package
VLT20BIN5	Value Line with 20 5" bins. Available with multiple locking options and a specialty package
VLT30BIN3	Value Line with 30 3.5" bins. Available with multiple locking options and a specialty package
VLT36BIN3	Value Line with 36 3.5" bins. Available with multiple locking options and a specialty package
VLT42BIN3	Value Line with 42 3.5" bins. Available w/multiple lock options

## ADDITIONAL MODELS

Item #	Description
--------	-------------

### Dispill® & Medicine-On-Time® Carts

SL270MOT Steel 270 MOT card capacity, available with specialty pkg

AL8W10K4DSP Wide aluminum Universal Line Dispill with specialty pkg. Available with multiple lock options

AL8W10K4MOT Wide aluminum Universal Line MOT with narcotics box

### Unit-Dose Carts

AL210BOX Aluminum 1-column 210 box capacity. Specialty pkg available.

AL294BOX Aluminum 1-column 294 box capacity. Specialty pkg available.

SL300BOX Steel 2-column 300 box capacity. Specialty pkg available.

SL420BOX Steel 2-column 420 box capacity. Specialty pkg available.

VLT216BOX Value line 216 box capacity. Available with multiple locking options and a specialty package.

WV294BOX AL294BOX in wood vinyl

### Multi-Dose Carts

AL48MDBIN Aluminum 1-column 48 Multi-Dose capacity with narcotics box.

AL64MDBIN Aluminum 1-column 64 Multi Dose capacity with narcotics box.

SL72MD Steel 2-column 72 Multi-Dose capacity with narcotics box. Available w/multiple lock options

### Cassette Carts

AL16CS-5 16 count of 5" wide patient bin drawers. Multiple locks available.

# WOOD VINYL MEDICATION CARTS

## WV240PC-CM

This wood blend medication cart holds up to 240 punch cards and is designed to support culture change initiatives in long term care. Constructed from lightweight aluminum with a wood vinyl coating, this four drawer cart has a removable top with a granite look.



## WV540PC-AN

This 540 punch card cart, shown in an American Natural finish is designed for long term care facilities or other settings where a homelike feel is desired. This puts patients at ease and helps to promote culture change initiatives toward person-centered home care.



## WV600PC-CM

This punch card variant is made of light vinyl coated aluminum and comes with a "marbled" top. It is designed to look like furniture and comes with a skirt that hides its rubber casters. It has a 600 punch card capacity and locking narc drawer similar to the AL600PC.



## WV360PC-CM

Constructed from lightweight, wood vinyl coated aluminum, this model resembles a dresser more than a medical cart and can store a maximum of 360 punch cards. It comes with a removable granite look top for extra work space.







## MAXIMUM SECURITY IN A VERY SMALL PACKAGE

*Each Harloff narcotics storage cabinet is constructed with either 18 or 20 gauge steel and comes with high security pick-resistant locks, full length steel pinned door hinges to prevent pin removal and predrilled holes in the back for mounting to a solid surface. Other than our wood vinyl wrapped cabinets, all Harloff narc boxes are finished with an antimicrobial beige heat sealed powder coat paint.*

## NARCOTICS CABINETS

*Government rules and regulations require you to keep narcotics in secure locations. By storing drugs in narcotics cabinets, you can keep the potentially dangerous and addictive drugs out of the hands of individuals who may abuse them while still having them near at hand for the patients who will benefit from them.*

*Harloff offers many different narcotic cabinets to help you keep both your controlled substances and your business secure including wood look cabinets, slim profile boxes and cabinets with audio/visual alarms.*



**Engineered and  
Manufactured in the U.S.**



**Now  
available in  
all standard  
colors!**

**2720**

## MAXIMUM SECURITY

Our narcotics cabinets feature high security pick-resistant tubular locks, with four keys included per lock. All cabinets are keyed differently with unique lock sequences, unless otherwise specified. Harloff uses full length stainless steel staked door hinges to prevent pin removal. Our dual door cabinets meet the highest level of security required by DEA storage guidelines.



Small  
16" H x 12" W x 9" D

2720

This compact narc box has a double door, double locking system that uses high security locks with four keys per lock. Designed for wall mounting, it comes with a single interior shelf.



QuickShip

available in Beige color

Tall  
24" H x 16" W x 8" D

2703

This tall, heavy duty narc box features dual door construction with two high security pick-resistant tubular locks for optimal protection.



QuickShip

available in Beige color

Medium  
15" H x 11" W x 8" D

2802AQ

This narcotics cabinet uses two high security pick-resistant tubular locks and dual door construction which complies with most JCAHO and state regulations. Includes 2 internal adjustable shelves.



QuickShip

available in Beige color

Small  
12" H x 15" W x 8" D

2825AQ

This small, single door, double locking narc box features two high security pick-resistant tubular locks. Locks are keyed separately, with four keys per lock. Includes one adjustable and/or removable shelf with the choice of four positions.



QuickShip

available in Beige color

Large  
29.5" H x 23.5" W x 10.5" D

2830AQ

This large narcotics cabinet has a single door with two high security pick-resistant tubular locks. Includes one fixed shelf and one adjustable, removable shelf.



QuickShip

available in Beige color

# NARCOTICS/MEDICATION CABINETS

## WV2760-CM

Available in standard finishes of Cherry Mahogany or American Natural. Other wood grain finishes also available.

This wall mount medication cabinet adds the look of wood to functional storage for an attractive in-room storage solution for 1-2 residents. Purposely designed to meet industry standards for security and function, this cabinet has a key lock with two keys but may be upgraded to an electronic keypad lock (WV2760E). The slam lock has one hand open and close. One row of this cabinet may be optionally converted to a locked narcotics storage box. This item may be mounted to an exterior wall or as a recessed in-wall cabinet with cabinet wrap. A drop down shelf is included to provide area for medication preparation. Has a capacity of 40 punch cards/liquid storage. 23" H x 14.63" W x 6.75" D



## 2810AQ

Mini  
10" H x 7" W x 7" D

This compact, single door, double locking narc box is made of heavy duty 20 gauge steel with beige antimicrobial powder coat finish. Features high security pick-resistant tubular lock with four keys per lock. Designed for wall mounting, it comes with a single interior shelf.



QuickShip

available in Beige color

## 27AVD20

18" H x 12" W x 8" D

This alarmed locking narcotics cabinet has an integrated Audio/Visual alarm to alert personnel when open. Battery-powered, so no need to be hard-wired – it can be mounted anywhere.



## 2811AQ

Mini  
10" H x 7" W x 7" D

This small, single door narc box has a single high security pick-resistant tubular lock, top mounted carrying handle and a light five pound weight.



QuickShip

available in Beige color

## 2701

Thin Profile  
15" H x 4" D x 11" W

This heavy duty, slim profile narc box features dual door construction and double locking protection with two high security pick-resistant tubular locks. Includes two adjustable shelves.



QuickShip

available in Beige color



## ADDITIONAL NARC CABINET MODELS

### Item # followed by description

2825AQ-DL

Medium Narcotics Cabinet, Single Door, Double Lock. 12" H x 15" W x 8"D. You have the Option to Disengage the Top Lock When a Double Locking Cabinet is Not Needed.

27AVD20E

All the same features of the 27AVD20 but with an electronic keypad lock.

27AVD20E-AT

All the same features of the 27AVD20E but with an electronic keypad lock.

27AVD20-DIGIPROX

All the same features of the 27AVD20 but with a Digilock® Electronic RFID Proximity Reader

27AVD03

All the same features of the 27AVD20 but larger! 26" H x 16" W x 8" D

2740PC-D

X-Large Narcotics & Medication Cabinet w/double-wide doors and a single lock. Two shelves hold 180 Punchcards. Bottom open area holds liquid storage. 30" H x 30" W x 10" D

# NARCOTICS CABINETS ORDER SHEET

## ADDITIONAL WOOD VINYL MEDICATION CABINET MODELS

Item #	Description
WV2718PC	Single Door, Single Lock Wood Vinyl Medication Cabinet w/shelf. 40 Punch Card capacity + liquid storage. 13.5" H x 18.25" W x 10.75" D. Also available with an electronic keypad lock, left opening door swing or locked narc storage box.
WV2766	Single Door, Single Lock Wood Vinyl Medication Cabinet w/shelf. 60 Punch Card capacity + liquid storage. One Hand Open/Close. For exterior mount with cabinet wrap. 23" H x 20.25" W x 6.75" D Also available with an electronic keypad lock, left opening door swing or locked narc storage box.
WV2761	Single Door, Single Lock Wood Vinyl Medication Cabinet w/shelf. 40 Punch Card capacity + liquid storage. One Hand Open/Close. For exterior mount only - no wrap. 23" H x 14.625" W x 6.75" D Also available with an electronic keypad lock, left opening door swing or locked narc storage box.
WV2795	ADA-Compliant Wood Vinyl In-Room Medication Cabinet w/shelf. 20 Punch Card capacity + liquid storage. For exterior mount with cabinet wrap. Includes Shelf and Bin with Divider. 23" H x 20.25" W x 5.25" D Also available with an electronic keypad lock, left opening door swing or locked narc storage box.
WV2718	Single Door, Single Lock Wood Vinyl Coated Medication Cabinet. Door opens into shelf. Cabinet Includes Adjustable Feet For Counter Top Use, or can be stud mounted. 40 Punch Card capacity + liquid storage. 11.0" 13.5" H x 18.25" W x 10.75" D
WV2781	In-Room Med Cabinet w/shelf. Unfinished Unit - Customer Adds Their Own Wood Door and trim. 40 Punch Card capacity + liquid storage. 22.75" H x 14.5" W x 6.85" D
WV2782	In-Room Med Cabinet w/shelf. Double thick door. Add your own wood trim. 40 Punch Card capacity + liquid storage. 23" H x 14.75" W x 6.85" D
WV2783E	All the same features of the WV2782 but with an electronic keypad lock. Also available with a left opening door swing
VLWALLCAB	Single Door, Single Lock Wall Mountable Cabinet. 50 Punch Card capacity + liquid storage. 2 adjustable shelves. 30.43" H x 18" W x 6.7" D
2786	Single Door, Single Lock Medication Cabinet. One Hand Open & Close, Drop Down Shelf. 12.75" H x 14.5" W x 6.5" D

### SPECIAL ORDER WOOD VINYL GRAINS



**Driftwood**



**Hayward Cherry**



**Russian Maple**

### STANDARD WOOD VINYL GRAINS



**Cherry Mahogany**



**American Natural**

# CART LOCKING OPTIONS

Harloff understands the importance of safely securing medical supplies in a public, hospital environment and offers a variety of high-quality standard locks, closure options and key lock overrides. We can also use custom mechanisms for special security needs upon request.

\* Find the latest lock updates online at <https://www.harloff.com/locking-options/>

## BREAKAWAY LOCK



### Features & Benefits

- Powder coat steel or aluminum break-away lock bar
- Comes with 100 break-away seals

**White Antimicrobial Paint upgrade can be added for extra protection (optional)**



Identified by "B"

## LATCH LOCK Identified by "L"



### Features & Benefits

- Quick, open access to any user with a simple 90 degree turn
- Allows doors to latch without other security considerations



## STANDARD KEY LOCK



### Features & Benefits

- Key Locking System comes with 2 keys
- Multiple key codes allow departments to be keyed differently or alike



Identified by "K"



## KEYLESS ELECTRONIC PUSHBUTTON LOCK

### Features & Benefits

- Key Lock Override • Cabinet may be programmed in the field
- Membrane keypad with pass/fail and low battery light indicators
- Up to 75,000 cycles before power depletion with standard batteries
- Batteries are changed externally using a tamper-proof screw
- 20 factory set codes per lock, 19 users and 1 supervisor • Made in the USA



Identified by "E"



## ELECTRONIC LOCK WITH KEYPAD

Compatible with LockView® 5 software (LKVIEW-CAB)

### Features and Benefits

- Key Lock Override
- May add, edit, or delete user and user groups
- Made in the USA • Access rights may be assigned for up to 250 users per cart
- Membrane keypad with pass/fail and low battery light indicators
- Drawers automatically re-lock after access (pre-set or programmed time)
- Operated with six D-cell batteries; 1 year minimum life at 25-50 uses per day



Identified by "EKC"



## ELECTRONIC LOCK W/KEYPAD AND PROXIMITY READER

Compatible with LockView® 5 software (LKVIEW-CAB)

### Features and Benefits

- Key Lock Override • Enables you to use existing credentials
- Membrane keypad with pass/fail and low battery light indicators
- Access rights may be assigned for up to 250 users per cart • Made in the USA
- May add, edit, or delete user and user groups • Allows for supervisor assignments; dual credential access available
- Drawers automatically re-lock after access (pre-set or programmed time)
- Operated with six D-cell batteries; 1 year minimum life at 25-50 uses/day
- Easily add new users with existing HID compatible badges (Prox and iClass)

Identified by "ELP"



## WIRELESS ELECTRONIC LOCK W/KEYPAD

Compatible with LockView® 5 software (LKVIEW-WIFI)

### Features and Benefits

- Key Lock Override
- Wireless Lock utilizes 802.11g wireless protocol or Ethernet communication on existing networks. Uses common security encryption methods; program up to 3,000 user codes and audit of the last 15,000 access attempts • Made in the USA
- User defineable network updates; change the download frequency to your preferences
- Allows alarms and reports via email, text, fax and voice for multiple notifications
- Membrane keypad with pass/fail and low battery light indicators • Capable of operating two separate latches or drawers



Identified by "WKC"



## WIRELESS ELECTRONIC LOCK W/KEYPAD AND PROXIMITY READER

Compatible with LockView® 5 software (LKVIEW-WIFI)

### Features and Benefits

- Key Lock Override • Enables you to use existing credentials
- Wireless Lock utilizes 802.11g wireless protocol or Ethernet communication on existing networks. Uses common security encryption methods; program up to 3,000 user codes and audit of the last 15,000 access attempts • Made in the USA
- Membrane keypad with pass/fail and low battery light indicators • Capable of operating two separate latches or drawers
- Allows for supervisor assignments; dual credential access available
- Easily add new users with existing HID compatible badges (Prox and iClass)
- User defineable network updates; change the download frequency to your preferences
- Allows alarms and reports via email, text, fax and voice for multiple notifications



Identified by "WLP"



# CABINET LOCKING OPTIONS

## KEYLESS ELECTRONIC PUSHBUTTON LOCK



Identified by "E"

### Features & Benefits

- Key Lock Override
- Cabinet may be programmed in the field
- Membrane keypad with pass/fail and low battery light indicators
- Up to 75,000 cycles before power depletion with standard batteries
- Batteries are changed externally using a tamper-proof screw
- 20 factory set codes per lock, 19 users and 1 supervisor
- Made in the USA



## LATCH LOCK Identified by "L"



### Features & Benefits

- Quick, open access to any user with a simple 90 degree turn
- Allows doors to latch without other security considerations



## STANDARD KEY LOCK Identified by "K"



### Features & Benefits

- Key Locking System comes with 2 keys
- Multiple key codes allow departments to be keyed differently or alike



## ELECTRONIC LOCK WITH KEYPAD Identified by "EKC"

### Features and Benefits

- Key Lock Override
- May add, edit, or delete user and user groups
- Made in the USA
- Access rights may be assigned for up to 250 users per cart
- Membrane keypad with pass/fail and low battery light indicators
- Drawers automatically re-lock after access (pre-set or programmed time)
- Operated with six D-cell batteries; 1 year minimum life at 25-50 uses per day

Compatible with LockView® 5 software (LKVIEW-CAB)



## ELECTRONIC LOCK W/KEYPAD AND PROXIMITY READER

Compatible with LockView® 5 software (LKVIEW-CAB)

Identified by "ELP"

### Features and Benefits

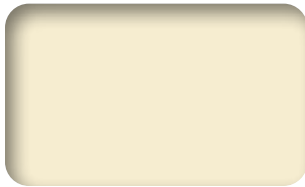
- Key Lock Override
- Enables you to use existing credentials
- Membrane keypad with pass/fail and low battery light indicators
- Access rights may be assigned for up to 250 users per cart
- May add, edit or delete user and user groups
- Made in the USA
- Allows for supervisor assignments; dual credential access available
- Drawers automatically re-lock after access (pre-set or programmed time)
- Operated with six D-cell batteries; 1 year minimum life at 25-50 uses/day
- Easily add new users with existing HID compatible badges (Prox and iClass)



# COLOR OPTIONS - CARTS & CABINETS

## STANDARD COLORS

\* Colors may vary slightly. Find the latest color updates online at <https://www.harloff.com/finish-options/>



**Beige**



**Burgundy**



**Light Blue**



**Light Gray**



**Navy**



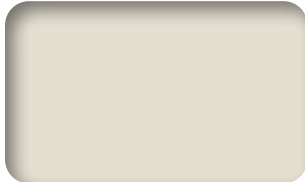
**Red**



**Teal**



**Yellow**



**Cream**



**White**



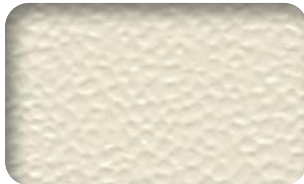
**Taupe**



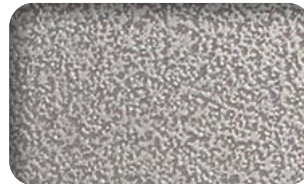
**Forest Green**



**Brushed Silver**



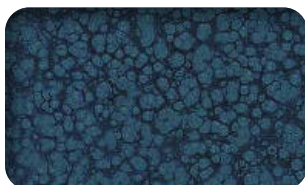
**Sand**  
(Textured)



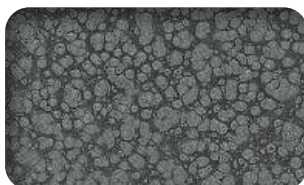
**Hammered Silver**  
(Textured)

## SPECIAL ORDER COLORS

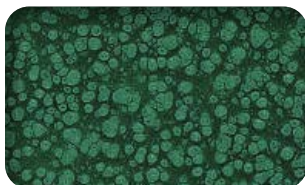
(Carts Painted  
These Colors Are  
Not Returnable)



**Hammered Blue**  
(Textured)



**Hammered Gray**  
(Textured)



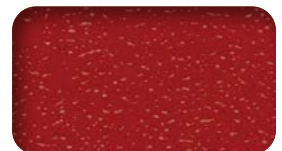
**Hammered Green**  
(Textured)



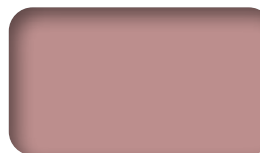
**Hammer Black**  
(Textured)



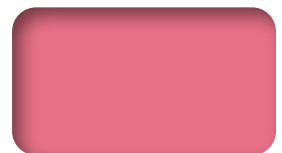
**Purple**



**Hammer Red**  
(Textured)



**Mauve**



**Pink**

# ARE YOU A MEDICAL DEVICE MANUFACTURER IN NEED OF NEW STORAGE SOLUTIONS?

## **Partner with harloff to help take all your storage ideas from concept to reality!**

The Harloff Company is known for our ability to take on custom and unique projects. This customizability separates us from our competitors and provides unique opportunities for business partnerships. Our on-site full-time engineering staff, state of the art production equipment and years of manufacturing experience allows us to quickly create new products and to act as a custom storage system developer for companies like yours. **Some examples are:**

We were approached by a company named TRACORP that was interested in our medication cabinets, but they really needed something that worked with a locking system they had already purchased. Although this was not a traditional Harloff lock, our engineering team made a modification to our standard medication cabinet and essentially built the cabinet around the lock, making it a seamlessly integrated component of the final product. The customer was very satisfied with the final results!

One of the companies with whom we have a long relationship sells custom automotive solutions. They paired a Harloff custom cart body with tools, computer hardware and scanning



technology to create an all-in-one system that maps collision damage in vehicles. Even companies outside of the medical industry have been able to partner with Harloff to create superior customer solutions!

On another occasion, we were approached by DeRoyal, a company that specializes in medical supply tracking through Radio Frequency Identification (RFID) technology. DeRoyal wanted to incorporate its medical supply tracking technology, used in hospitals to track inventory and consumption of medical devices and supplies into RFID-capable medical carts and surgical trash cans. At the inception of this idea, DeRoyal understood that RFID waves cannot penetrate the steel/aluminum construction of Harloff carts and trash cans. DeRoyal went to work to solve this RFID penetration problem, which resulted in a patented solution that masks RFID interference in such a way that allows the RFID technology to continue to track supplies. Harloff worked with DeRoyal to not only provide a more cost-effective supply of carts and trash cans, but to also incorporate its patented RFID solution into these products.



By customer request, we modified one of our standard cabinets into mobile IntraOcular lens box storage carts for use within surgical vision centers. The solution was so successful that our IntraOcular Lens Carts (or IOL carts) are now a standard part of our product offering at Harloff.

Automation is taking an increasingly larger role within medical facilities, with COWs (Computer Operated Workstations) and other powered medical carts becoming more commonplace. Harloff once fulfilled a request for our products to be retrofitted for daily end-of-shift restocking by automated facility robots! We are always looking for ways to pair our carts and cabinets with new tech companies to provide added benefit to nurses and medical staff everywhere.

In both large and small ways, Harloff has been able to use our custom engineering capabilities to fit the needs of our customers. Need a step stool carrier added to your cart? **We've done that.** How about custom accessory holders for non-standard items? **No problem, we've done that too.** No matter what your need, or how large or small the project, Harloff has the staff and experience that you need to build a custom storage system for your developing concept. We'd be delighted to design the perfect custom cart or storage system for your facility!

**To inquire about partnership opportunities or to discuss your concept with our sales and engineering team, please reach out to Greg Stadjuhar at (719) 466-9048 or email [medicalsales@harloff.com](mailto:medicalsales@harloff.com) today.**